

IN THE MOON-SHOWER.

(L'HEURE EXQUISE.)

A Poem to be read with *Obbligato* of
Piano, Violin and Voice.

English translation by

GERTRUDE HALL

From the French of

PAUL VERLAINE

In "La Bonne Chanson."

Music by

HARVEY WORTHINGTON LOOMIS.

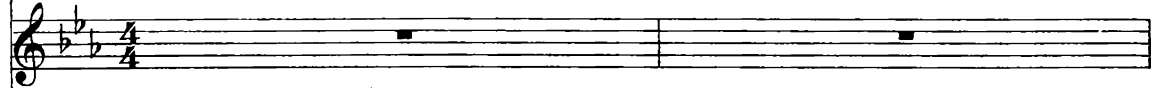
Op. 70, No. 4.

Andante sostenuto.

SOPRANO
or TENOR.



VIOLIN.



Andante sostenuto.

PIANO.

pp non troppo legato.

poco rit.

pp

Reader. O'er the wood's brow,
Pale, the moon stares;

Récitant. La lune blanche
Luit dans les bois;

Meno andante.
con sordino.

espress.

Meno andante.

pp

pp

pp

pp

In every bough
Wandering airs
Faintly suspire . . .

*De chaque branche
Part une voix
Sous la ramée . . . mp espress.*

O heart's de - sire!
O bien - ai - mée.

p > < *molto cres - cen - do* >

poco sfz

Detailed description: This system contains the first vocal entry and piano accompaniment. The vocal line is in a treble clef with a key signature of two flats (B-flat and E-flat). It begins with a whole rest, followed by a half note G4, a quarter note A4, and a half note B-flat4. The piano accompaniment starts with a piano (*p*) dynamic and a *molto crescendo* marking. The piano part features a series of chords and moving lines in both hands, with a *poco sfz* (poco fortissimo) marking appearing in the right hand.

Two willow-trees
Waver and weep,

*L' étang reflète,
Profond miroir.*

mp *espress.* *ten.*

p

Detailed description: This system continues the vocal and piano parts. The vocal line starts with a *mp* dynamic and a *molto* marking. It features a series of eighth notes and quarter notes, ending with a *ten.* (tenuto) marking and a triplet of eighth notes. The piano accompaniment begins with a piano (*p*) dynamic and consists of a steady eighth-note accompaniment in the left hand and chords in the right hand.

One in the breeze,
 One in the deep
 Glass of the stream...

*La silhouette
 Du saule noir
 Où le vent pleure ...*

Dream we our dream!
 Rê - vous c'est l'heure.

p *molto cresc.*

poco sfz *col Violino*

Detailed description: This system contains the first vocal line and piano accompaniment. The vocal line starts with a long note on 'Dream' and continues with 'we our dream!'. The piano accompaniment features a melodic line in the right hand and a more rhythmic line in the left hand. Dynamics include piano (p) and molto crescendo (molto cresc.). The piano part includes a section marked poco sfz (poco sforzando) and a section marked col Violino (with the violin).

An infinite
 Resignedness
 Rains

*Un vaste et tendre
 Apaisement*

mp *molto espress.*
poco allargando.

mp *col Violino.*

Detailed description: This system continues the musical score. The vocal line has a melodic line with a triplet ending. The piano accompaniment features a melodic line in the right hand and a more rhythmic line in the left hand. Dynamics include mezzo-piano (mp) and molto espressivo (molto espress.) with poco allargando (poco allargando). The piano part includes a section marked col Violino (with the violin).

where the white
Mists opalesce
In the moon-shower...

*Semble descendre
Du firmament
Que l'astre irise...*

Stay per - fect hour!
C'est l'heure ex - quise,

mf portamento.

p cresc. mp

espress.

espress. mf p

Stay per - fect hour!
l'heure ex - quise.

mp p ppp

poco pp ppp

col canto.

L.H.

p pp ppp

3rd Ped. al fine.