

Jean Baptiste Lully

Francesco Buti

AMOUR MALADE

1657

Dessus

TABLE DES MATIÈRES

Prologue

0-1 Ouverture	4
0-2 Ritournelle	4
0-3 Ritournelle	4
0-4 Ritournelle	5
0-5 Ritournelle	5
0-6 Ouverture pour le premier divertissement	5

Première Entrée

1-1 Divertissement	6
1-2 Sarabande	6
1-3 Ritournelle	6
1-4 Troisième air pour le concert du divertissement	6

Deuxième Entrée

2-1 Deux astrologues	7
2-2 Le bonheur et le malheur	7
2-3 Ritournelle	7

Troisième Entrée

3-1 Deux chercheurs de trésors	8
3-2 Deux esprits folets	8
3-3 Quatre démons	8
3-4 Ritournelle	8

Quatrième Entrée

4-1 Quatre braves galants	9
4-2 Ritournelle	9
4-3 Ritournelle	9
4-4 Chansons contre les jaloux	10
4-5 Ritournelle	10
4-6 Les suivantes des coquettes	10
4-7 Deuxième air pour les braves jaloux	10

Cinquième Entrée

5-1 Onze docteurs	11
5-2 Ritournelle	11
5-3 Deuxième air pour un docteur ayant une thèse d'âne	11
5-4 Troisième air pour Scaramouche	11

Sixième Entrée

6-1 Huit chasseurs	12
6-2 Ritournelle	12

Septième Entrée

7-1 Deux alchimistes	13
7-2 Ritournelle	13
7-3 Six Mercure se moquent d'eux	13
7-4 Ritournelle	13

Huitième Entrée

8-1 Six Indiens et six Indiennes	14
8-2 Ritournelle	14

Neuvième Entrée

9-1 Jean Doucet et son frère	15
9-2 Deuxième air pour les mêmes Jean Doucet	15
9-3 Ritournelle	15
9-4 Troisième air pour les quatre Bohémiennes	15

Dernière Entrée

10-1 Un concert champêtre de l'époux.	16
10-2 Gavotte pour le marié et la mariée.	16
10-3 Sarabande pour le père et la mère du marié.	16
10-4 Ritournelle	16
10-5 Gavotte pour les parents de la mariée.	17
10-6 Deuxième air pour les parents de la mariée.	17
10-7 Gaillarde pour les parents et amis des mariés.	17
10-8 Sarabande et dernier air.	17
10-9 Ritournelle	18
10-10 Première ritournelle	18
10-11 Deuxième ritournelle	18
10-12 Troisième ritournelle	18

PROLOGUE

0-1 OUVERTURE

Musical score for 0-1 OUVERTURE, written in treble clef, 2/4 time, and B-flat major. The score consists of five staves of music. The first staff begins with a treble clef, a key signature of two flats (B-flat major), and a 2/4 time signature. The music features a series of eighth and quarter notes with various ornaments (trills and grace notes). The second staff starts at measure 8 and includes a first ending bracket labeled '1'. The third staff starts at measure 15 and includes a second ending bracket labeled '2'. The fourth staff starts at measure 23. The fifth staff starts at measure 30 and ends with a double bar line and repeat dots.

0-2 RITOURNELLE

Musical score for 0-2 RITOURNELLE, written in treble clef, 3/4 time, and B-flat major. The score consists of two staves of music. The first staff begins with a treble clef, a key signature of two flats (B-flat major), and a 3/4 time signature. The music features a series of eighth and quarter notes with various ornaments. The second staff starts at measure 8 and includes two first ending brackets labeled '1' and '2'.

0-3 RITOURNELLE

Musical score for 0-3 RITOURNELLE, written in treble clef, 3/4 time, and B-flat major. The score consists of three staves of music. The first staff begins with a treble clef, a key signature of two flats (B-flat major), and a 3/4 time signature. The music features a series of eighth and quarter notes with various ornaments. The second staff starts at measure 10 and includes a double bar line with repeat dots. The third staff starts at measure 18 and ends with a double bar line and repeat dots.

0-4 RITOURNELLE

Musical score for Ritournelle 0-4, measures 1-18. The piece is in 3/4 time and B-flat major. It features a melodic line with various ornaments and rests. Measure 10 includes a repeat sign. Measure 18 ends with a double bar line and repeat dots.

0-5 RITOURNELLE

Musical score for Ritournelle 0-5, measures 1-19. The piece is in 3/4 time and B-flat major. It features a melodic line with various ornaments and rests. Measure 19 ends with a double bar line and repeat dots.

0-6 OUVERTURE POUR LE PREMIER DIVERTISSEMENT

Musical score for Ouverture pour le premier divertissement, measures 1-41. The piece is in 3/4 time and B-flat major. It features a melodic line with various ornaments and rests. Measure 9 includes a key signature change to B-flat major. Measure 18 includes a repeat sign. Measure 25 includes a time signature change to 3/2. Measure 32 includes a key signature change to B-flat major. Measure 41 ends with a double bar line and repeat dots.

PREMIÈRE ENTRÉE

1-1 Divertissement



Musical score for 1-1 Divertissement, consisting of four staves of music in 2/2 time. The key signature has two flats (B-flat and E-flat). The first staff starts with a treble clef and a 2/2 time signature. The music features various note values, including quarter, eighth, and sixteenth notes, with some notes marked with a 'w' (trill). The piece concludes with a double bar line.

1-2 SARABANDE



Musical score for 1-2 Sarabande, consisting of three staves of music in 3/2 time. The key signature has two flats (B-flat and E-flat). The first staff starts with a treble clef and a 3/2 time signature. The music features various note values, including quarter, eighth, and sixteenth notes, with some notes marked with a 'w' (trill). The piece concludes with a double bar line.

1-3 RITOURNELLE



Musical score for 1-3 Ritournelle, consisting of two staves of music in 3/2 time. The key signature has one sharp (F-sharp). The first staff starts with a treble clef and a 3/2 time signature. The music features various note values, including quarter, eighth, and sixteenth notes, with some notes marked with a 'w' (trill). The piece concludes with a double bar line.

1-4 TROISIÈME AIR POUR LE CONCERT DU DIVERTISSEMENT



Musical score for 1-4 Troisième Air pour le Concert du Divertissement, consisting of two staves of music in 3/2 time. The key signature has one sharp (F-sharp). The first staff starts with a treble clef and a 3/2 time signature. The music features various note values, including quarter, eighth, and sixteenth notes, with some notes marked with a 'w' (trill). The piece concludes with a double bar line.

DEUXIÈME ENTRÉE

2-1 Deux astrologues

Musical score for 'Deux astrologues' in G major, 2/4 time. The score consists of five staves of music. The first staff starts with a treble clef, a key signature of one sharp (F#), and a 2/4 time signature. The melody features various rhythmic values including eighth and sixteenth notes, often beamed together. The second staff includes first and second endings. The third staff ends with a 3/2 time signature change. The fourth and fifth staves continue the melodic line.

2-2 LE BONHEUR ET LE MALHEUR

Musical score for 'Le bonheur et le malheur' in G major, 2/4 time. The score consists of four staves of music. The first staff starts with a treble clef, a key signature of one sharp (F#), and a 2/4 time signature. The melody is characterized by frequent sixteenth-note patterns. The second staff includes first and second endings. The third and fourth staves continue the melodic line.

2-3 RITOURNELLE

Musical score for 'Ritournelle' in G minor, 2/4 time. The score consists of two staves of music. The first staff starts with a treble clef, a key signature of two flats (Bb, Eb), and a 2/4 time signature. The melody features a mix of eighth and sixteenth notes. The second staff concludes the piece with a double bar line.

TROISIÈME ENTRÉE

3-1 Deux chercheurs de trésors

Musical score for 'Deux chercheurs de trésors' in G minor, common time. The score consists of three staves. The first staff starts with a treble clef and a key signature of two flats. The second staff begins at measure 7 and includes first and second endings. The third staff begins at measure 22 and ends with a double bar line.

3-2 DEUX ESPRITS FOLETS

Musical score for 'Deux esprits folets' in G major, 2/2 time. The score consists of three staves. The first staff starts with a treble clef and a key signature of one sharp. The second staff begins at measure 6. The third staff begins at measure 12 and ends with a double bar line.

3-3 QUATRE DÉMONS

Musical score for 'Quatre démons' in G minor, common time. The score consists of three staves. The first staff starts with a treble clef and a key signature of two flats. The second staff begins at measure 8 and includes first and second endings. The third staff begins at measure 15 and ends with a double bar line.

3-4 RITOURNELLE

Musical score for 'Ritournelle' in G minor, 3/4 time. The score consists of two staves. The first staff starts with a treble clef and a key signature of two flats. The second staff begins at measure 8 and ends with a double bar line.

QUATRIÈME ENTRÉE

4-1 Quatre braves galants

Musical score for '4-1 Quatre braves galants' in G major, 4/4 time. The score consists of five staves of music. The first staff begins with a treble clef, a key signature of one flat (F major), and a common time signature. The melody features eighth and sixteenth notes, with a fermata over a quarter note in the second measure. The second staff starts at measure 4 and includes first and second endings. The third staff starts at measure 8. The fourth staff starts at measure 11 and includes a fermata. The fifth staff starts at measure 14 and ends with a double bar line.

4-2 RITOURNELLE

Musical score for '4-2 RITOURNELLE' in G major, 3/4 time. The score consists of three staves of music. The first staff begins with a treble clef, a key signature of one flat (F major), and a 3/4 time signature. The melody is primarily composed of quarter and half notes. The second staff starts at measure 8. The third staff starts at measure 15 and ends with a double bar line.

4-3 RITOURNELLE

Musical score for '4-3 RITOURNELLE' in G major, common time. The score consists of one staff of music. The melody begins with a treble clef, a key signature of one flat (F major), and a common time signature. It features a mix of quarter, eighth, and sixteenth notes, ending with a double bar line.

4-4 CHANSONS CONTRE LES JALOUX



4-5 RITOURNELLE



4-6 LES SUIVANTES DES COQUETTES



4-7 DEUXIÈME AIR POUR LES BRAVES JALOUX



CINQUIÈME ENTRÉE

5-1 Onze docteurs

Musical score for '5-1 Onze docteurs' in G major, common time. The score consists of four staves of music. The first staff starts with a treble clef, a key signature of one sharp (F#), and a common time signature. The melody features a mix of quarter, eighth, and sixteenth notes, with some rests. The second staff begins at measure 8 and includes a repeat sign. The third staff begins at measure 15, and the fourth staff begins at measure 22, ending with a double bar line.

5-2 RITOURNELLE

Musical score for '5-2 RITOURNELLE' in B-flat major, 3/4 time. The score consists of two staves of music. The first staff starts with a treble clef, a key signature of two flats (B-flat, E-flat), and a 3/4 time signature. The melody is primarily composed of quarter notes. The second staff begins at measure 11 and includes a repeat sign.

5-3 DEUXIÈME AIR POUR UN DOCTEUR AYANT UNE THÈSE D'ÂNE

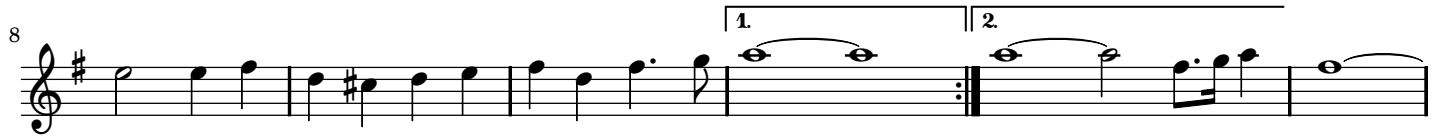
Musical score for '5-3 DEUXIÈME AIR POUR UN DOCTEUR AYANT UNE THÈSE D'ÂNE' in G major, 3/4 time. The score consists of two staves of music. The first staff starts with a treble clef, a key signature of one sharp (F#), and a 3/4 time signature. The melody features a mix of quarter and eighth notes. The second staff begins at measure 9 and includes a repeat sign.

5-4 TROISIÈME AIR POUR SCARAMOUCHE

Musical score for '5-4 TROISIÈME AIR POUR SCARAMOUCHE' in B-flat major, 3/4 time. The score consists of three staves of music. The first staff starts with a treble clef, a key signature of two flats (B-flat, E-flat), and a 3/4 time signature. The melody includes first and second endings. The second staff begins at measure 9 and includes a repeat sign. The third staff begins at measure 20 and includes a repeat sign.

SIXIÈME ENTRÉE

6-1 Huit chasseurs



6-2 RITOURNELLE



SEPTIÈME ENTRÉE

7-1 Deux alchimistes

Musical score for '7-1 Deux alchimistes' in G minor, 4/4 time. The score consists of six staves of music. The first staff begins with a treble clef, a key signature of two flats (B-flat and E-flat), and a common time signature. The melody features a series of eighth and quarter notes, with some notes marked with a 'w' (trill) and a 'b' (bend). A first ending bracket is placed over measures 16 and 17, with a second ending bracket over measures 18 and 19. The piece concludes with a double bar line.

7-2 RITOURNELLE

Musical score for '7-2 RITOURNELLE' in G minor, 3/4 time. The score consists of two staves of music. The first staff begins with a treble clef, a key signature of two flats, and a 3/4 time signature. The melody is characterized by a mix of quarter and eighth notes, with several trills marked with a 'w'. The piece ends with a double bar line.

7-3 SIX MERCURE SE MOQUENT D'EUX

Musical score for '7-3 SIX MERCURE SE MOQUENT D'EUX' in G major, 4/4 time. The score consists of three staves of music. The first staff begins with a treble clef, a key signature of one sharp (F#), and a common time signature. The melody is lively, featuring many eighth and sixteenth notes, with several trills marked with a 'w'. A first ending bracket is placed over measures 8 and 9, with a second ending bracket over measures 10 and 11. The piece concludes with a double bar line.

7-4 RITOURNELLE

Musical score for '7-4 RITOURNELLE' in G minor, 4/4 time. The score consists of two staves of music. The first staff begins with a treble clef, a key signature of two flats, and a common time signature. The melody features a mix of quarter and eighth notes, with several trills marked with a 'w'. The piece ends with a double bar line.

HUITIÈME ENTRÉE

8-1 Six Indiens et six Indiennes

Musical score for 'Six Indiens et six Indiennes' in G major, 2/4 time. The score consists of six staves of music. The first staff begins with a treble clef, a key signature of one sharp (F#), and a common time signature. The melody features eighth and quarter notes with various ornaments. The second staff includes first and second endings, with a repeat sign and a 3/2 time signature change at the end. The third staff continues the melody in 3/2 time. The fourth staff features a 2/2 time signature change and includes sixteenth-note passages. The fifth and sixth staves conclude the piece with a final double bar line.

8-2 RITOURNELLE

Musical score for 'RITOURNELLE' in G major, 3/4 time. The score consists of four staves of music. The first staff begins with a treble clef, a key signature of one sharp (F#), and a 3/4 time signature. The melody is characterized by quarter and eighth notes. The second staff includes a repeat sign and a 3/2 time signature change. The third and fourth staves conclude the piece with a final double bar line.

NEUVIÈME ENTRÉE

9-1 Jean Doucet et son frère



9-2 DEUXIÈME AIR POUR LES MÊMES JEAN DOUCET



9-3 RITOURNELLE



9-4 TROISIÈME AIR POUR LES QUATRE BOHÉMIENNES



DERNIÈRE ENTRÉE

10-1 UN CONCERT CHAMPÊTRE DE L'ÉPOUX.

Musical score for 'UN CONCERT CHAMPÊTRE DE L'ÉPOUX.' in G major, 3/4 time. The score consists of three staves. The first staff contains measures 1-7. The second staff starts at measure 8 and includes a first ending (marked '1.') and a second ending (marked '2.'). The third staff contains measures 16-22. The key signature has one sharp (F#) and the time signature is 3/4.

10-2 GAVOTTE POUR LE MARIÉ ET LA MARIÉE.

Musical score for 'GAVOTTE POUR LE MARIÉ ET LA MARIÉE.' in G minor, 3/4 time. The score consists of three staves. The first staff contains measures 1-5. The second staff starts at measure 6. The third staff starts at measure 11. The key signature has two flats (F, C) and the time signature is 3/4.

10-3 SARABANDE POUR LE PÈRE ET LA MÈRE DU MARIÉ.

Musical score for 'SARABANDE POUR LE PÈRE ET LA MÈRE DU MARIÉ.' in G minor, 3/4 time. The score consists of two staves. The first staff contains measures 1-10. The second staff starts at measure 11. The key signature has two flats (F, C) and the time signature is 3/4.

10-4 RITOURNELLE

Musical score for 'RITOURNELLE' in G minor, common time. The score consists of two staves. The first staff contains measures 1-6. The second staff starts at measure 7. The key signature has two flats (F, C) and the time signature is common time (C).

10-5 GAVOTTE POUR LES PARENTS DE LA MARIÉE.

Musical notation for Gavotte for the Parents of the Bride. The piece is in 3/4 time, key of B-flat major. The first system (measures 1-5) starts with a treble clef and a key signature of two flats. The melody consists of eighth and quarter notes, with a repeat sign at the end of measure 5. The second system (measures 6-10) continues the melody with similar rhythmic patterns and a final repeat sign at the end of measure 10.

10-6 DEUXIÈME AIR POUR LES PARENTS DE LA MARIÉE.

Musical notation for the Second Air for the Parents of the Bride. The piece is in 3/2 time, key of B-flat major. The first system (measures 1-7) begins with a treble clef and a key signature of two flats. The melody features a mix of quarter and half notes, with a repeat sign at the end of measure 7. The second system (measures 8-14) continues the piece with a similar melodic structure and a final repeat sign at the end of measure 14.

10-7 GAILLARDE POUR LES PARENTS ET AMIS DES MARIÉS.

Musical notation for Gaillarde for the Parents and Friends of the Bride and Groom. The piece is in 3/4 time, key of B-flat major. The first system (measures 1-5) starts with a treble clef and a key signature of two flats. The melody is characterized by eighth and quarter notes, with a repeat sign at the end of measure 5. The second system (measures 6-10) continues the melody with a final repeat sign at the end of measure 10.

10-8 SARABANDE ET DERNIER AIR.

Musical notation for Sarabande and Last Air. The piece is in 3/4 time, key of B-flat major. The first system (measures 1-8) begins with a treble clef and a key signature of two flats. The melody consists of quarter and eighth notes, with a repeat sign at the end of measure 8. The second system (measures 9-17) continues the piece with a final repeat sign at the end of measure 17.

10-9 RITOURNELLE



10-10 PREMIÈRE RITOURNELLE



10-11 DEUXIÈME RITOURNELLE



10-12 TROISIÈME RITOURNELLE

