

CHOIR and PIANO ACCOMPANIMENT

13

Vo.

mf

if I call you pret-ty pret-ty girl
 der - sem sa - na gü - zel gü - zel kız
 3)if I hug you
 3)sarı-lırsam sa - na

Pno.

mf

3

17

Vo.

would you smile would you smile
 gülüm - ser - misin gülüm - ser - misin

Pno.

3

3

21

Vo.

if I call you would you smile
 der - sem sa - nsa gülüm - ser - misin
 3)if I hug you
 3)sarı-lırsam sa - na

Pno.

3

3

25

Vo. if I call you pret - ty pret - ty girl
gü - zel kız gü - zel gü - zel kız

Pno.

29

Vo.

Pno.

mf

33

Vo. 2) Pret-ty girl pret-ty girl if I hold your hand
2)Gü - zel kız gü - zel kız eli - ni tu - tar - sam
4)if I kiss your cheek
4)öper-sem se - ni

Pno.

mp

37

Vo.

Pret-ty girl pret-ty girl if I hold your hand
 Gü-zel kız gü-zel kız eli - ni tu - tar - sam
 4)if I kiss your cheek
 4)öper-sem se - ni

Pno.

p

3 3 3 3

41

Vo.

mf

2)if I hold your hand pret-ty pret-ty girl
 2)eli - ni tu - tar - sam gü-zel gü-zel kız
 4)if I kiss - your cheek
 4)öper-sem se - ni

Pno.

mf

3

45

Vo.

would you smile would you smile
 gülüm - ser - misin gülüm - ser - misin

Pno.

3 3

49

Vo.

2)if I hold your hand would you smile
 2)eli - ni tu - tar - sam gülüm - ser - misin
 4)if I kiss your cheek
 4)öper-sem se - ni

Pno.

3 3

53

Vo.

2)if I hold your hand pret-ty pret-ty girl
 2)eli - ni tu - tar - sam gü - zel gü - zel kız
 4)if I kiss your cheek
 4)öper-sem se - ni

Pno.

3

How can I?

Ali Riza SARAL

Allegro ♩ = 120

Voice

Your looks are cute so cute warm and sweet warm and sweet
Ba - kış - la - rın ne hoş tat - lı tat - lı

Piano

9

Vo.

Your hands are cute so cute soft and sweet soft and sweet
El - le - rin ne hoş sim - sı - cak sim - sı - cak

Pno.


17


Vo.

Hands your hands your hands I would hold I would
El - le - ri - ni tut - mak is - te - rim


Pno.


25

Vo.  Your eyes are blue so blue they - shine they - shine
Göz - le - rin ne gü - zel ı - şıl ı - şıl

Pno. 

33

Vo.  Your hair is beau - ti - ful it - shines it - shines
Saç - la - rin ne gü - zel pı - rıl pı - rıl

Pno. 

41

Vo.  I would look in your eyes your eyes your eyes your eyes
Göz - le - rim se - nin - le ba - kış - mak is - ter

Pno. 


49

Vo.  Your words are sweet so sweet full of sym - pathy full of sym - pathy
Söz - le - rin ne tat - ılı sev - gi do - lu sev - gi do - lu


Pno. 

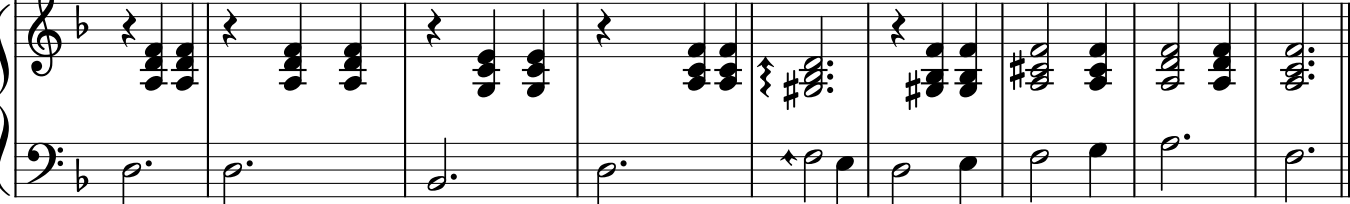
57

Vo.  Your lips are sweet so sweet full of warmth full of warmth
Du - dak - la - rin tat - ılı şım - sı - cak şım - sı - cak

Pno. 

65 rit. $\text{♩} = 96$

Vo.  But - your mouth - smells - ash How can I kiss you a - gain
A - ma ağ - zın ko - ku - yor kül Se - ni na - sıl ö - pe - rim

Pno. 

Concentrate on what?

Neye dikkat?

Ali Riza SARAL

Allegro $\text{♩} = 60$

$\text{♩} = 60$

$\text{♩} = 60$

Solo Voice

Choir

Piano

act as if you cannot read/play the notes

f

mf

f

mf

f

mf

5

Solo

mf

I can not play my inst - ru - ment
Enst - rü-ma - nı - mı ça - la-mı-yo-rum

Play play play
Çal çal çal

play play play
çal çal çal

Choir

mf

Play play play
Çal çal çal

play play play
çal çal çal

Pno.

The piano accompaniment for the second system consists of two staves: a treble clef staff and a bass clef staff. The treble staff features a continuous eighth-note pattern in the right hand, while the bass staff provides a simple harmonic accompaniment with quarter notes and rests.

9

Solo

mp
I cannot sing my song - Sing sing sing sing sing sing
Şar - k1-m1 söy - le - ye-mi-yo-rum Söyle söyle söyle söyle söyle söyle

Choir

mp
Sing sing sing sing sing sing
Söyle söyle söyle söyle söyle söyle

Pno.

13

Solo

mf
What shall I do What shall I do
Ne yap - ma-lı - yım Ne yap - ma-lı - yım

Choir

Pno.

17

Solo

Choir

mf

What shall you do What shall you do
 Ne yap - malı - sın Ne yap - malı - sın

Pno.

21

Solo

mf

I cannot do my home - work
 Ö - de-vi-mi - ya - pa-mı-yo-rum

Choir

mf *f* *mf* *f*

Study study study study study study
 Çalış çalış çalış çalış çalış çalış

Pno.

25

Solo

I cannot think - any - thing
Hiç bir şey dü - şü - ne - mi-yo-rum

Choir

per - sist per-sist per - sist per-sist
ıs - rar ıs - rar ıs - rar ıs - rar

Pno.

29

Solo

What shall I do
Ne yap - ma-lı - yım

Choir

What shall I do
Ne yap - ma-lı - yım

Pno.

33

Solo

What shall you do
Ne yap - ma-lı - sın

Choir

What shall you do
Ne yap - ma-lı - sın

Pno.

37

Solo

mf
I cannot re - mem - ber - any - thing
Hiç bir şey dü - şü - ne-mi - yo-rum

Choir

mf
Re - lax Re - lax
Ra - hat - la Ra - hat - la

Pno.

41

Solo

I break - down - ev - ry - thing
Her şe - yi kı - rıp dö - kü-yo-rum

Choir

Con - cent - rate Con - cent - rate
Dik - kat Dik - kat

Pno.

45

Solo

What can I do
Ne yapa - bi - li - rim

Choir

Pno.

49

Solo

What can you do
Ne yapa - bi - lir - sin

Choir

What can you do
Ne yapa - bi - lir - sin

Pno.

53

Solo

mf
I want - to do ev - ry - thing
Her şe - yiyap - mak is - ti-yo-rum

Choir

mf
Per - sist per-sist Per - sist per-sist
Is - rar is-rar Is - rar is-rar

Pno.

57

Solo

I cannot do - a - ny - thing
Hiç - bir şey ya-pa-mı-yo-rum

Choir

Per - se - vere Per - se - vere
A - zim A - zim

Pno.

61

Solo

Musical notation for the Solo voice part, measures 61-64. The melody consists of quarter and eighth notes.

I have to - con - cent - rate I have to - con - cent - rate
 Dik - ka - ti-mi toplama - lı - yım Dik - ka - ti-mi toplama - lı - yım

Choir

Musical notation for the Choir part, measures 61-64. The part is mostly silent with some rests.

Pno.

Musical notation for the Piano accompaniment, measures 61-64. The right hand has a rhythmic pattern of eighth notes, and the left hand has a steady bass line.

65

Solo

Musical notation for the Solo voice part, measures 65-68. The melody continues with quarter and eighth notes.

mp

You have to - con - cent - rate You have to - con - cent - rate
 Dik - ka - ti-ni toplama - lı - sın Dik - ka - ti-ni toplama - lı - sın

Choir

Musical notation for the Choir part, measures 65-68. The part features a melodic line with some rests.

mp

You have to - con - cent - rate You have to - con - cent - rate
 Dik - ka - tini - toplama - lı - sın Dik - ka - tini - toplama - lı - sın

Pno.

Musical notation for the Piano accompaniment, measures 65-68. The accompaniment continues with a consistent rhythmic pattern.

69

Solo

f

On what on what on what on what
 Ne - ye ne - ye ne - ye ne - ye

Choir

f

On what on what on what on what
 Ne - ye ne - ye ne - ye ne - ye

Pno.

73

Solo

mf

You have to - con - cent - rate You have to - con - cent - rate
 Dik - ka - ti-ni topla - malı - sın Dik - ka - ti-ni topla - malı - sın

Choir

mf

You have to - con - cent - rate You have to - con - cent - rate
 Dik - ka - tini - topla - malı - sın Dik - ka - tini - topla - malı - sın

Pno.

77

Solo

mf
 On what On what re ally mat - ters
 Ger - çek - ten ö - nem - liye ö - nem - liye ö - nem - liye

Choir

mf
 On what on what re ally mat - ters
 Ne - ye ne - ye ö - nem - liye ö - nem - liye

Pno.

81

Solo

mp
 On what On what re ally mat - ters
 Ger - çek - ten ö - nem - liye ö - nem - liye ö - nem - liye

Choir

mp
 On what on what re ally mat - ters
 Ne - ye ne - ye ö - nem - liye ö - nem - liye

Pno.

85

$\text{♩} = 60$

$\text{♩} = 60$

$\text{♩} = 60$

Solo

A single staff of music for a solo voice part. It contains four measures, each with a whole rest, indicating that the soloist is silent during this section.

Choir

A single staff of music for a choir part. It contains four measures, each with a whole rest, indicating that the choir is silent during this section.

Pno.

A grand staff for piano accompaniment, consisting of a treble and a bass clef. The first measure features a treble clef with a quarter rest followed by an eighth-note melody: G4, A4, B4, C5, B4, A4, G4. The bass clef has a whole note G3. The second measure has a treble clef with a whole note chord (G4, B4, C5) and a bass clef with a quarter rest followed by an eighth-note melody: G3, A3, B3, C4, B3, A3, G3. The third measure has a treble clef with a whole rest and a bass clef with an eighth-note melody: G3, A3, B3, C4, B3, A3, G3. The fourth measure has a treble clef with a whole note chord (G4, B4, C5) and a bass clef with a quarter rest followed by an eighth-note melody: G3, A3, B3, C4, B3, A3, G3. The dynamic marking *mf* is placed below the first measure.

mf

Peak yourself

Kendine eriş

Ali Riza SARAL

Andante $\text{♩} = 84$

Solo

Solo Voice

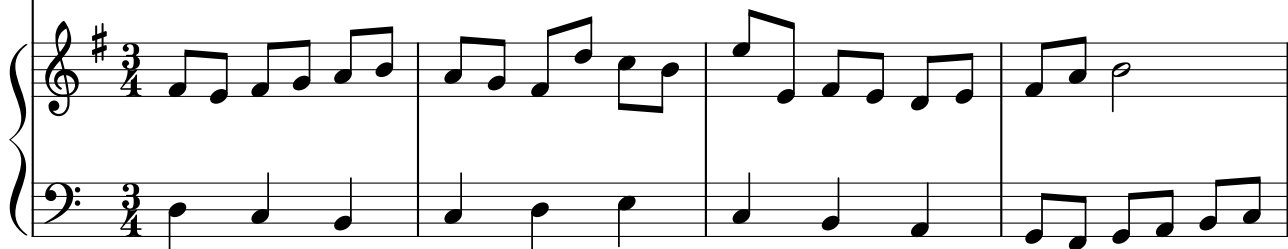


Peak your - self at the right - mo - ment
Doğ - ru za - man - da ken - di - ne e - riş

Choir

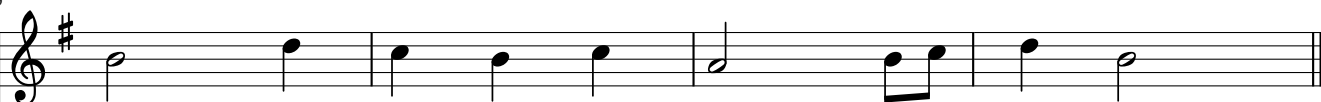


Piano



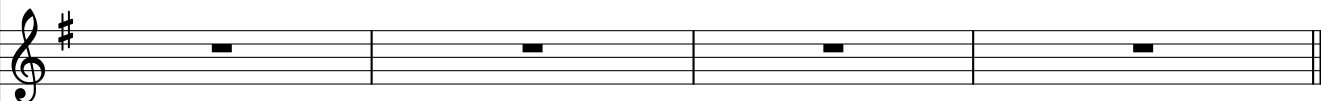
5

Solo

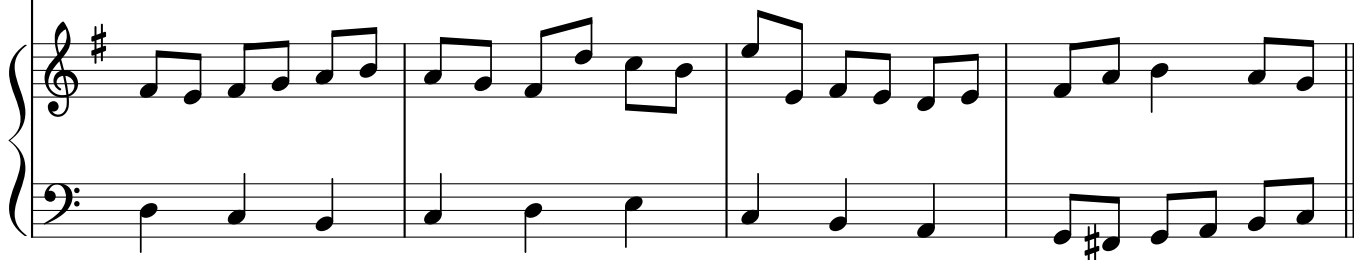


If you want - to be - success - ful
E - ğer ba - şar - mak is - ter - sen

Choir



Pno.



♩ = 88
solo2

9

Solo

if you feel weak - - -
E - ğer za - yif - san

Choir

Pno.

13

Solo

Choir

tutti choir

when you have to be strong
kuv - vet - li ol - man ge - rek

Pno.

17 solo3

Solo

if you face a dan - ger
E - ğer teh - like - dey - sen

Choir

Pno.

21

Solo

Choir

tutti choir

when you do not ex - pect
 bek - le - me - diğin an - da

Pno.

25

Solo

solo4

if you take a chall - lenge
 Boy öl - çüş - tü - ğün - de

Choir

Pno.

29

Solo

Choir

tutti choir

when you have to suc - ceed
 üs - tün gel - mek i - çin

Pno.

$\text{♩} = 80$
Solo

33

Solo

Peak your - self at the right - mo - ment
Doğ - ru za - man - da ken - di - ne e - riş

Choir

Pno.

37

Solo

If - you want - to be - success - ful
E - ğer ba - şar - mak is - ter - sen

Choir

Pno.

Reduce self-importance

Kendini önemseme

Ali Riza SARAL

♩ = 112

Choir

Stop re - duce self im - por - tance re - duce self im - por - tance re - lax
Dur ken - di - ni ö - nem - se - me ken - di - ni ö - nem - se - me gev - şe

Piano

5

Choir

Stop take it - easy - - take it - easy - re - lax
Dur ra - hat ra - hat ol - ra - hat - ol - gev - şe

Pno.

9

Choir

Don't - take - e - ve - ry - thing - se - rious

Pno.

13

Choir

Re - duce - self im - por - tance -

Pno.

17

Choir

Stop re - duce self im - por - tance re - duce self im - por - tance re - lax
 Dur ken - di - ni ö - nem - se - me ken - di - ni ö - nem - se - me gev - şe

Pno.

21

Choir

Stop take it - easy - - take it - easy - re - lax
 Dur ra - hat ra - hat ol - - ra - hat - ol - gev - şe

Pno.

Where do you go

Nereye gidiyorsun

Ali Riza SARAL

Soprano solo
Andante ♩ = 96

Solo Voice

Are - you go - ing Ho - me?
E - ve mi - gi - di - yor - sun

Choir

Piano

5

♩ = 80 Tutti choir ♩ = 96 Solo1 (choir)

Solo

Or - Are - you go - ing to - school - ?
Yok - sa O - ku - la mi - gi - di - yor - sun?

Choir

Or -
Yok - sa

Pno.

11 $\text{♩} = 80$ Tutti choir $\text{♩} = 96$ Solo2 (choir)

Solo

Or - Are - you go - ing to a movie - ?
 Yok - sa ka - fe - ye mi - gi - di - yor - sun?

Choir

Or - Do you know - what - to choose
 Yok - sa Bi - li - yor - mu - sun

Pno.

17 $\text{♩} = 80$ Tutti choir $\text{♩} = 96$ Solo3 (choir)

Solo

inthe future Will - you go - ab - road - ?
 Gelecek - te Yurt - dı - şı - na - mı - gi - di - yor - sun?

Choir

inthe future
 Gelecek - te

Pno.

23 $\text{♩} = 84$ Tutti choir $\text{♩} = 100$ Solo4 (choir)

Solo



inthe future Will - you stay - at - Home - ?
Yok - sa Bu - ra - da mı - ka - lı - yor - sun?

Choir




inthe future Do you know - what - to choose
Yok - sa Bi - li - yor - mu - sun

Pno.




29 $\text{♩} = 88$ Tutti choir $\text{♩} = 104$ Solo5 (choir)

Solo



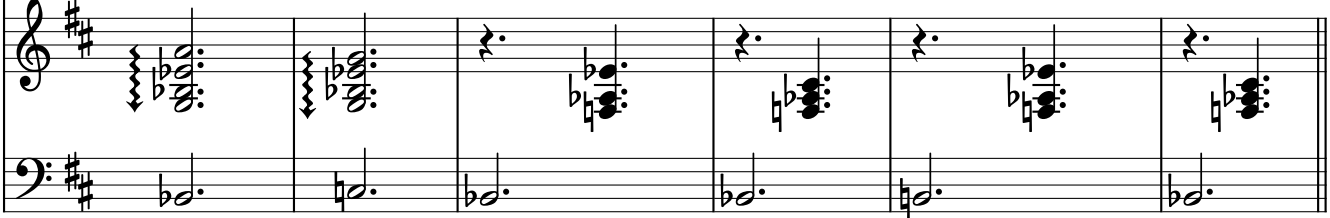
Waita minute Will - you go - this - way?
Birdaki - ka Bu - yö - ne mi - gi - di - yor - sun?

Choir



Waita minute
Birdaki - ka

Pno.



35 $\text{♩} = 92$
Tutti choir $\text{♩} = 108$ Solo6 (choir)

Solo

Or - Will - you go the o - ther way?
Yok - sa Baş - ka yö - ne mi - gi - di - yor - sun?

Choir

Or - Do you know - what - to choose
Yok - sa Bi - li - yor - mu - sun

Pno.

41 $\text{♩} = 96$
Soprano Solo

Solo

Are - you go - ing Ho - Or -
E - ve mi - gi - di - yor - E - E -

Choir

Do you know what to choose
Bi - li - yor - mu - sun

Pno.

45

Solo
 Are - you - go - ing - to school -

Choir
 Do you know where to go
 Ne - re - ye gidi - yor - sun

Pno.

49

Solo
 Are - you go - ing Ho - Or -
 E - ve mi - gi - di - yor - E - E

Choir
 Do you know what to choose
 Bi - li - yor - mu - sun

Pno.

53

Solo
 Are - you - go - ing - to school

Choir
 Do you know where to go
 Ne - re - ye gidi - yor - sun

Pno.