

A
S. JOSÉ



AVE MARIA

(PARA CANTO E ORGÃO)

—•••••
PALAVRAS DO

DR. J. B. SILVA BRITO

MUSICA DE

JULIO REIS

4881

RS. 2\$500



E. BEVILACQUA & C.

43 RUA DOS OURIVES - RUA DE S. BENITO

Rio de Janeiro - S. Paulo (Casa 1)

B

510784.3

AVE MARIA

(MEZZO-SOPRANO)

Palavras do D.^r J. B. Silva Brito.

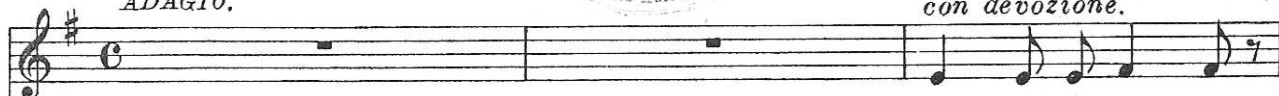


Musica de JULIO REIS.

ADAGIO.

con devozione.

CANTO.



A - ve! Ma - ri - a!

ADAGIO.

ORGANO.



rallent.

De gra-ça chei - a! Di - vina Hebré - a! Im - ma - cu - la - - da!

rallent.



animato poco.

Es - posa a - ma - - da!

a tempo.

animato poco.



Pe - lo Se - nhor! Bem - di - ta se - jas Pe - lo pe - nhor

rallent.
Do ben - to sei - o O Re - - - - dem - ptor!.....

rallent. *a tempo.*

a tempo. espress.
Fru - eto, fructo di -

rallent. *a tempo.*

- vi - - no! Que nos re - mi - o, Que nos un - gi - o Com o seu

san - - gue! Fi - cando e - xan - - gue Sobre u - ma

The first system features a vocal line in G major with lyrics "san - - gue! Fi - cando e - xan - - gue Sobre u - ma". The piano accompaniment consists of a right hand with triplets of eighth notes and a left hand with a steady eighth-note bass line. The key signature has one sharp (F#).

Cruz O Bom Je - - sus! Sal - - ve! Ma -

ten. *TEMPO.* *p*

rallent. *p*

The second system continues the vocal line with lyrics "Cruz O Bom Je - - sus! Sal - - ve! Ma -". It includes performance markings: "ten." (sustain), "TEMPO." (change of tempo), and "p" (piano). The piano accompaniment features a right hand with chords and a left hand with a bass line. A time signature change to 2/4 is indicated. The key signature remains G major.

- ri - - a! Mãe do Se - - nhor!..... O Re - dem -

cresc.

The third system continues the vocal line with lyrics "- ri - - a! Mãe do Se - - nhor!..... O Re - dem -". The piano accompaniment features a right hand with flowing sixteenth-note passages and a left hand with chords. A "cresc." (crescendo) marking is present. The key signature remains G major.

- ptor!..... Ro - gae por nós.....

The fourth system concludes the vocal line with lyrics "- ptor!..... Ro - gae por nós.....". The piano accompaniment continues with flowing sixteenth-note passages in both hands. The key signature remains G major.

Os pec - ca - do - res Que sempre a vós Nós re - cor -

The first system features a vocal line in treble clef with a key signature of one sharp (F#) and a 7/8 time signature. The lyrics are "Os pec - ca - do - res Que sempre a vós Nós re - cor -". The piano accompaniment is in G major and 7/8 time, starting with a piano (*p*) dynamic. It consists of two staves: a right-hand staff with flowing eighth-note patterns and a left-hand staff with a steady eighth-note accompaniment.

- re - mos A ve! Can - te - mos Os teus lou - vo - res.

lento.
pp

col canto
lento.
pp

The second system continues the vocal line with the lyrics "- re - mos A ve! Can - te - mos Os teus lou - vo - res." The tempo is marked *lento.* and the dynamic is *pp*. The piano accompaniment includes the instruction *col canto* and continues with a *lento.* tempo and *pp* dynamic. The right-hand piano part features a melodic line with some grace notes, while the left-hand part provides harmonic support with chords and moving lines.

ADAGIO. *con devozione.*

A - - ve! Ma - ri - - a!

ADAGIO.

The third system is marked *ADAGIO.* and *con devozione.* The vocal line contains the lyrics "A - - ve! Ma - ri - - a!". The piano accompaniment is also marked *ADAGIO.* and begins with a piano (*p*) dynamic. The right-hand piano part has a simple, steady accompaniment, while the left-hand part features a more active bass line with eighth-note patterns.

De gra - ça hei - a! Di - vina Hebré - a! Im - ma - cu - la - - da!

rallent.

rallent.

The fourth system is marked *rallent.* and contains the lyrics "De gra - ça hei - a! Di - vina Hebré - a! Im - ma - cu - la - - da!". The piano accompaniment also includes a *rallent.* instruction. The right-hand piano part has a simple accompaniment, while the left-hand part features a more active bass line with eighth-note patterns.



animato poco.

Es-posa a-ma-da!

animato poco.

Pe-lo Se-nhor!

Bem-di-ta se-jas

Pe-lo pe-nhor

rallent.

Do ben-to sei-o

O Re - - - dem-ptor!.....

rallent.

A..ve! Ma-ri...a!