

Basso.

Jaty

And^{te} quasi addagio.

D: b C 4

Pizz *surdina arco*

ben surdina Pizz

mf arco cresc. f

allarg. a tempo

dim. P *f*

surdina. f

dim. P

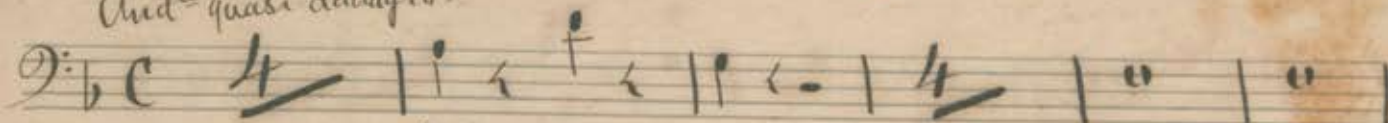
Rall. PP

Basso.

Jaty.

3.

And^{te} quasi adagio.



Pizz



surdina arco

sem surdina Pizz



mf arco cresc.

f tempo

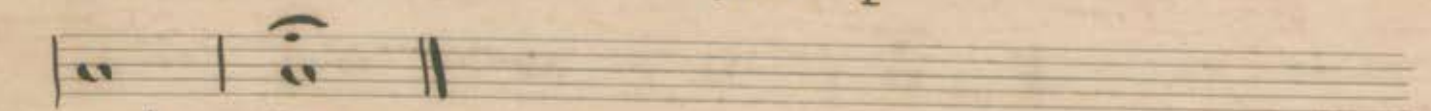


dim. P



surdina. f

dim. P



Rall. PP

Basso. (Ar.) July

And^{te} quasi adagio.

4/4

A Pizz. *surdina arco*

Pizz. surdina **B**

mf arco misc. f

C *allarg. a tempo*

dim. p *surdina f*

E *dim. p*

Rall. pp

Basso.

Jaty.

And^{te} quasi adagio.

First staff of music. Time signature: 4/4. Includes the instruction *pizz* (pizzicato) and *surdina arco* (mute on the bow).

Second staff of music. Includes the instruction *sem surdina* (without mute).

Third staff of music. Includes the instruction *arco cresc. f* (arco, crescendo, fortissimo).

Fourth staff of music. Includes the instruction *allarg. a tempo* (allargando, then a tempo).

Fifth staff of music. Includes the instruction *dim. p* (diminuendo, piano).

Sixth staff of music. Includes the instruction *surdina f* (mute, fortissimo).

Seventh staff of music. Includes the instruction *dim. p* (diminuendo, piano).

Eighth staff of music. Ends with a double bar line.

Rall. pp