

Giuseppe Colombi
(1635-1694)

Chiaccona a Basso solo

MS, I-MOe, Mus.E.350

**Transposed from F Major to G Major
for modern cello tuning: A, D, G, C**

Typeset from a facsimile of the manuscript which can be found in the:
Elizabeth Cowling Cello Music Collection, SC002,
Martha Blakeney Hodges Special Collections and University Archives,
University Libraries, The University of North Carolina at Greensboro.

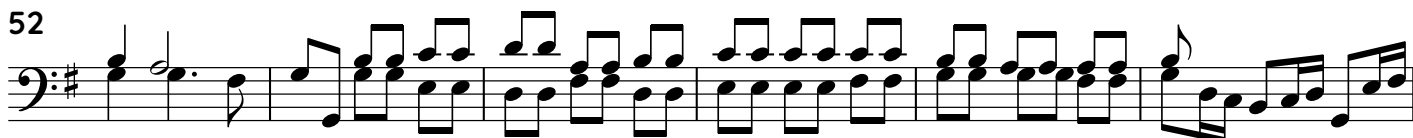
Typeset by Charlie Rasmussen, 2020, CC BY-NC 4.0

Chiacona a Basso solo

MS, I-MOe, Mus.E.350
(Transposed to G Major: A, D, G, C tuning)

Giuseppe Colombi
(1635-1694)





* Similar slurs are notated on each double stop in mm. 33-36, mm. 53-56, beat 3 of m.28, and beat 2 of m. 52.

Typeset from a facsimile of the manuscript which can be found in the:
Elizabeth Cowling Cello Music Collection, SC002,
Martha Blakeney Hodges Special Collections and University Archives,
University Libraries, The University of North Carolina at Greensboro.