

JOHN BLOW

VENUS AND ADONIS



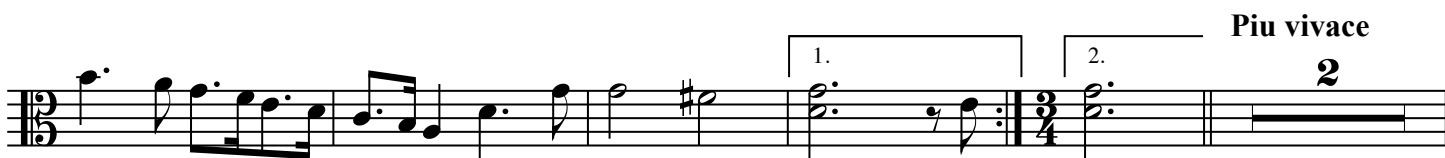
A MASQUE

Edited by G. E. P. Arkwright
Parts prepared by Bart Dunn

VIOLA

Overture

Maestoso





Tempo primo.



Prologue

The musical score for "Prologue" consists of ten staves of music. The first staff begins with a treble and bass clef, a 2/4 time signature, and a key signature of one sharp (F#). It features a 14-measure rest followed by an 8-measure rest, then a melodic line. A box labeled 'A' is positioned above the 8-measure rest. The second staff continues the melody with a first ending (1.) and a second ending (2.), followed by a 26-measure rest and a 4-measure rest. A box labeled 'B' is above the second ending. The third staff shows a melodic line with a 4-measure rest at the end. The fourth staff begins with a 4-measure rest, followed by a melodic line. The fifth staff features a box labeled 'C' above a 22-measure rest, followed by a 20-measure rest in a 3/4 time signature, and then a melodic line. A box labeled 'D' is above the 20-measure rest. The sixth staff continues the melodic line. The seventh staff continues the melodic line. The eighth staff continues the melodic line. The ninth staff features a box labeled 'E' above a 16-measure rest. The tenth staff continues the melodic line.

Cupid's Entry

Fast.

The musical score for 'Cupid's Entry' is written for a single melodic line in treble clef with a common time signature (C). The piece begins with a repeat sign. The first staff contains the initial melody. The second staff features a key signature change to one sharp (F#) and includes first and second endings. The third staff continues the melody. The fourth staff concludes the piece with first and second endings. The notation includes various note values such as quarter, eighth, and sixteenth notes, as well as rests and repeat signs.

Act I

Act Tune

16 **5** **12** **24**

A Slow Fast

B Fast **C**

33 **4** **25**

1. 2. Slow

Fast **D** **E**

27 **13** **20** **2** **15**

Slow Fast

F **G** Entry: A Dance by a Huntsman.

38



This page is left blank to alleviate page turns

Act II Tune



Act II

A The Cupid's Lesson

B Slow

44 27 39 8 5

C A Dance of Cupid's (Twice over)

D Slow

E Chorus of the Graces

16



F The Grace's Dance (Twice over)



G Gavatt
Fast.



H Sarabrand for the Graces



255



I A Ground





Act III

Act Tune.

Slow.

Musical notation for the Act Tune, first system. It consists of two staves in 3/4 time. The first staff contains the main melody, and the second staff contains the bass line. The key signature has one flat (B-flat). The melody begins with a quarter rest, followed by a series of eighth and quarter notes. A first ending bracket spans the final two measures, and a second ending bracket spans the final measure.

Musical notation for the Act Tune, second system. It consists of two staves in 3/4 time. Section A is marked with a box 'A' and the tempo 'Slow'. Section B is marked with a box 'B'. Section C is marked with a box 'C'. The notation includes various rhythmic values and rests. Section A has a measure rest of 68. Section B has a measure rest of 13. Section C has a measure rest of 5. The key signature has one flat. The melody is primarily eighth and quarter notes. First and second endings are indicated with brackets and numbers 1 and 2.