

63

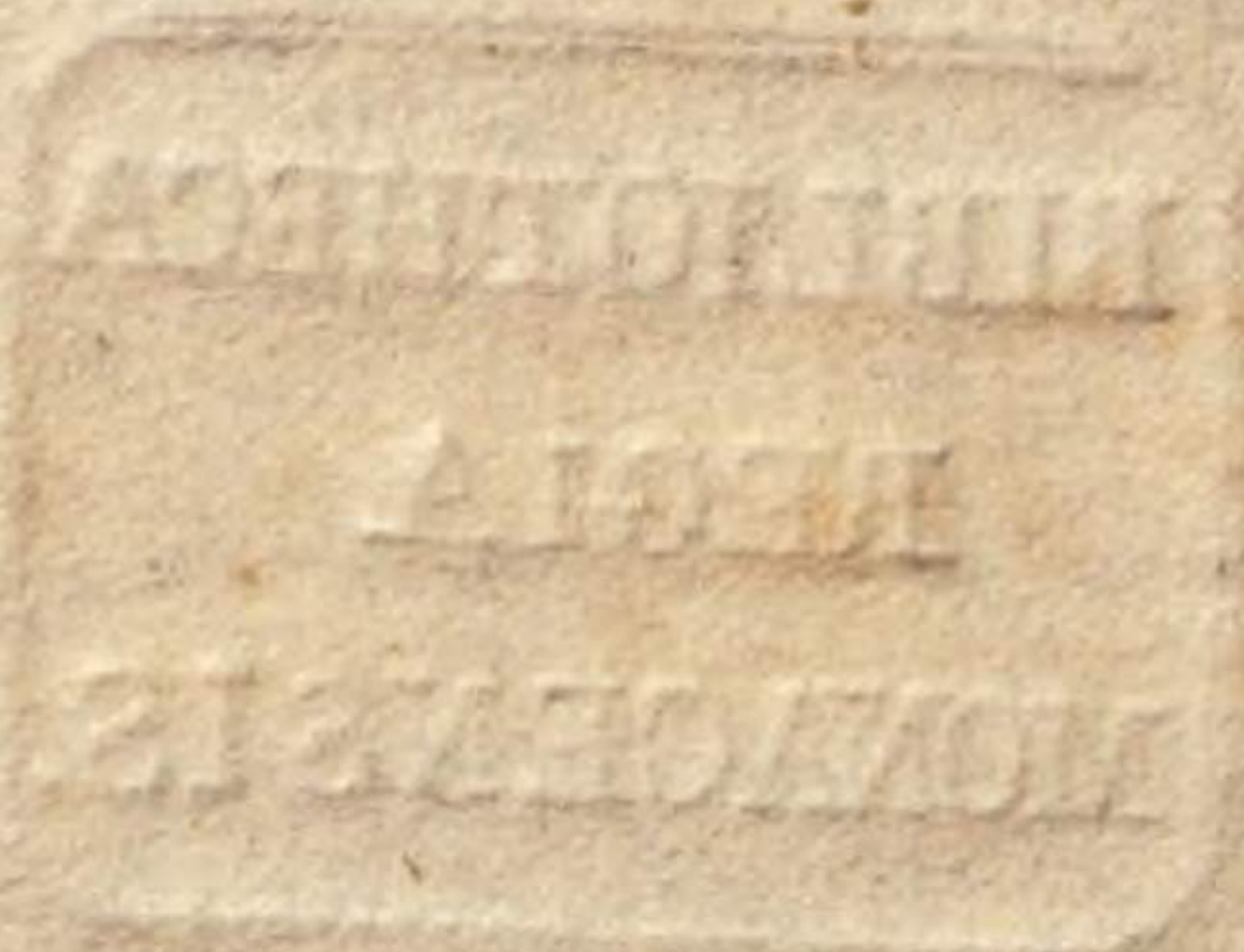
O B O E II.



D. Weiß Engl. Tänze I. Samml.

Ⓢ

O B O E . 11



No. 1.

Oboe II.

Forte.

Piano.

Forte.

Pianiss.

Forte.

No. 2.

Oboe II.

Rinforz.

Musical staff with treble clef, key signature of two flats, and 3/4 time signature. It contains a sequence of notes starting with a forte dynamic and ending with a rinforzando marking.

Forte.

Piano.

Musical staff with treble clef, featuring a repeat sign and a 4-measure rest.

Musical staff with treble clef, containing a few notes and a repeat sign.

Empty musical staff.

No. 3.

Oboe II.

Piano crescendo il Forte. *Piano crescendo il Forte.*

Fortiss.

Poco Piano. *Poco Piano.*

Fortiss. *Forte. Piano.*

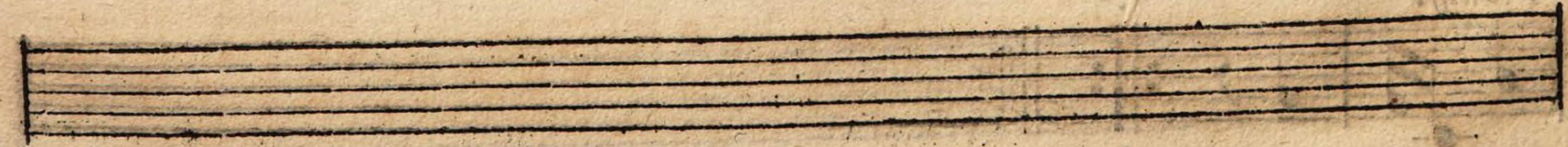
Pianiss.

No. 5.

Oboe II.

Forte.

Piano crescendo il Forte.



No. 6.

Oboe II.

Majeur.

Rinforz.

Fortè.

Piano.

Mineur.

Fortiss. Rinforz.

No. 7.

Oboe II.

Fortiss. *Forte.* *Piano.*

Forte. *Piano.*

No. 8.

Forte. *Forte.* *Piano.*

Forte.

No. 9.

Oboe II.

Majeur. *Fortiss.*



Mineur. *Sempre Piano.*



Poco Forte.

No. 10.

Oboe II.

Majeur.

Fort. Pian.

The first staff of music is in the treble clef, key of B-flat major (one flat), and 3/8 time signature. It begins with a C-clef on the first line. The melody consists of eighth and quarter notes, with a fermata over the final note. The staff concludes with a double bar line and repeat dots.

Forte. Piano.

The second staff continues the melody from the first. It features dynamic markings of *Forte.* and *Piano.* The melody is primarily eighth notes with some quarter notes. It ends with a double bar line and repeat dots.

Mineur.

Piano. Rinforz.

The third staff is in the treble clef, key of B-flat minor (two flats), and 3/8 time signature. It begins with a C-clef on the first line. The melody consists of eighth and quarter notes, with a fermata over the final note. The staff concludes with a double bar line and repeat dots.

Forte. Piano.

The fourth staff continues the melody from the third. It features dynamic markings of *Forte.* and *Piano.* The melody is primarily eighth notes with some quarter notes. It ends with a double bar line and repeat dots.

No. II.

Oboe II.

1810A



Forte.



No. 12.

Oboe II.

Forte. *Forte. Piano. Forte. Piano.*

Pianiss.

Fortiss.

Fine.