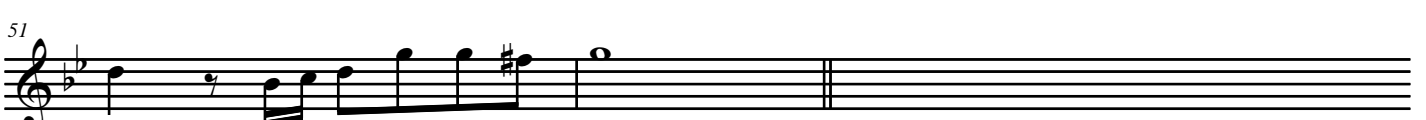
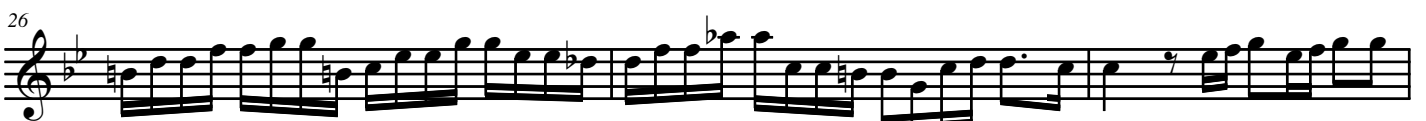




Flauto Traversiero

1

Antonio VIVALDI (1678 - 1741)



53

Largo

55 1.

58

61 1.

64

67

69

Voltare

71 *Allegro* 3

77 8.

92 *tr* *tr* *tr* *tr* *tr* *tr* *tr*

102

108 7.

121 8.

134

138

142

150

157

162

168

174

4 178

181

185

