

à Joëlle Tiprez

## I. PROMENADE MYSTÉRIEUSE

Tranquillo  $\text{♩} = 33$

pp

7 *mp* *pù*

13 *cresc. stretto* *f* *mp*

20 *rit.* *calando* *pp* *pizz.*

## II. HISTORIETTE

Giocoso  $\text{♩} = 88$

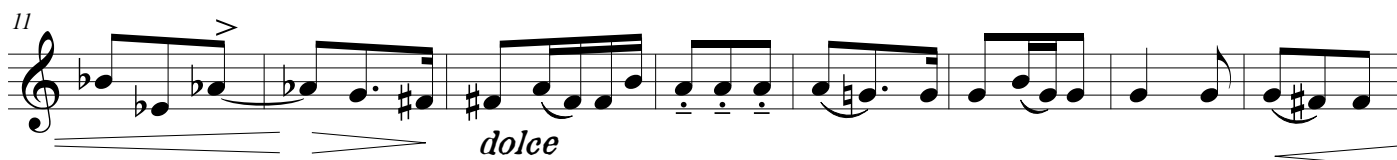
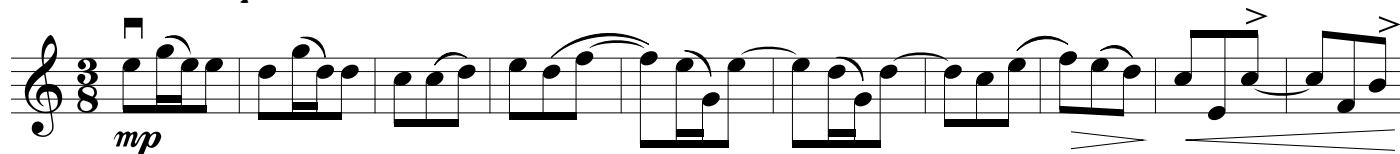
*poco f*

8 *Con tenerezza* *p*

15 *mf* *f* *T° primo*

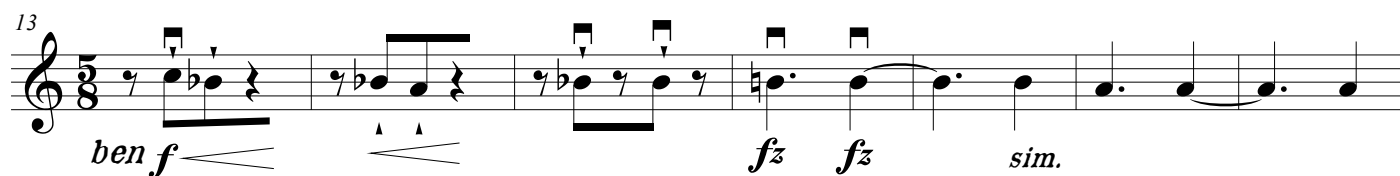
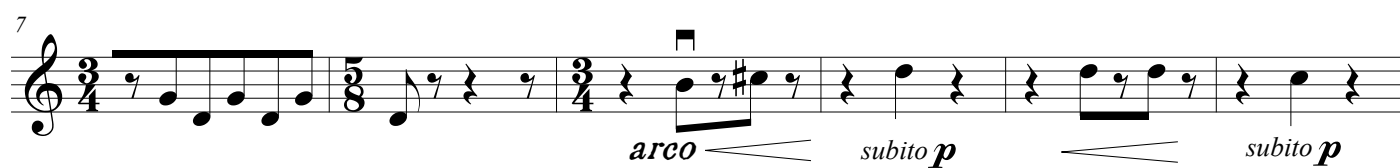
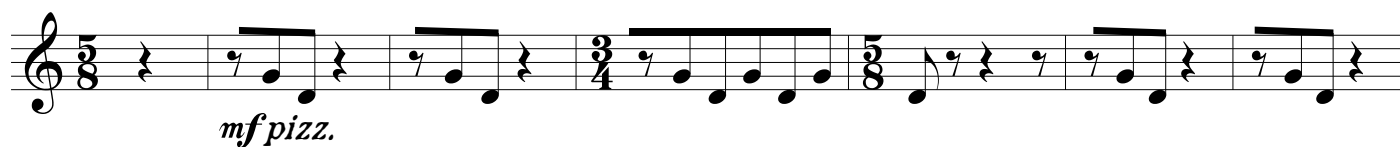
## III. NINNA-NANNA

Dolcemente espressivo ♩ = 66



## IV. FINALE

All° non troppo ♩ = 250



Ostinato - Istesso T°

28 **3**  
*sfz* *mf leggiero*

37 *poco f*

45 **Come primo**  
*dim.* *pizz.*

53 *arco* *subito p* *subito p*

59 *cresc. con fuoco* *f* *dim.* *rit.* *f*

