

Missa in Es

Oboe 1

Ambros Rieder (1771-1855)

I. Tantum ergo

Andante cantabile

Oboe primo

14

fp *p* *pf* *rf*

mf *pf* *f* *f*

II. Kyrie

Andante

Solo

Oboe primo

9

14

22

34

41

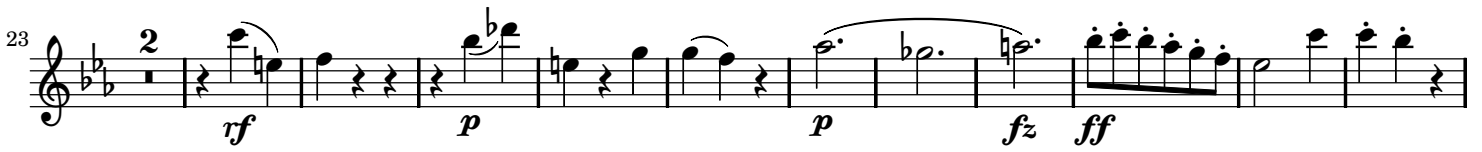
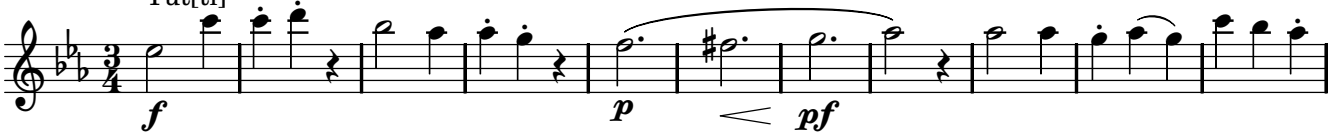
p *pf* *rf* *rf* *fp* *p* *p* *dim.*

III. Gloria

Allegro

Tut[ti]

Oboe primo



IV. Graduale

Spiritoso

Tut[ti]

Oboe primo



V. Credo

Oboe primo *con moto*
Tut[ti]

1
9
17
25
33
47

pf *f*
rf *rf* *rf*
rf
rf *p* *p* *f*
pf *rf* *p* *f* *p* *f* *ff*

VI. Offertorium

Oboe primo *Andante*
dol[ce]

1
8
14
21
28

p *pf* *p* *pf* *p* *pf*
p *p* *fz* *pf* *fz*
p *f* *rf* *rf*
f *p* *p* *p*
pf *pf*

34 *f* *p* *p*

41 *f* *fp* *fp*

48 *pf* *fp* *fz* *p* *dol:[ce]*

54 *pf* *rf* *fz* *fz* *f* *rfz*

63 *fz* *fz* *rf* *rf* *dol:[ce]*

69 *p* *f* *pf* *p*

75 *rf* *rfz* *fz* *p* *p*

82 *rf* *p* *rf* *pf* *dol:[ce]*

88 *pf* *f* *f* *fz* *fz*

95 *p* *p* *rf* *ff* *p* *dol:[ce]*

102 *p* *pf* *fp* *p* *pp* *dol:[ce]* *dim:[inuendo]*

VII. Sanctus

Oboe primo *Andante*
Tut[ti]

Measures 1-35 of the Oboe primo part for the Sanctus. The music is in 3/4 time with a key signature of two flats. Dynamics include *f*, *p*, *fz*, *rf*, and *ff*. The piece concludes with a double bar line.

VIII. Benedictus

Oboe primo *con moto*

Measures 1-111 of the Oboe primo part for the Benedictus. The music is in 3/4 time with a key signature of two flats. It features a 4-measure rest at the beginning and a 7-measure rest later. Dynamics include *fz*, *p*, *f*, *pf*, *rf*, and *ff*. The piece concludes with a double bar line.

IX. Angus Dei

Adagio

[Tutti]

Oboe primo

Measures 1-12: *p* < *f* *mf* *rf* *fz* *fz*

Measures 13-25: *p* *mf* < *rf* *f*

Measures 26-36: *f* *rfz* *f* *rf*

Measures 37-48: *p* < *rfz* Solo *dol: [ce]* >

Measures 49-57: *fp* *p* *p* < *f* Tut: [ti]

Measures 58-68: *fz* *fz* *pf* *p* < *pf* *f*

Measures 69-78: *p* *rf* *p* *f* *p* *f* *ff*

Tantum ergo da capo