

# OVERTURE AND SUITE

from *Rodrigo* (1707)

HWV 5

Arranged for Recorders by R. D. Tennent

G. F. Handel (1685–1759)

## 1. Overture

Largo (♩ = 50)

Soprano  
Recorder



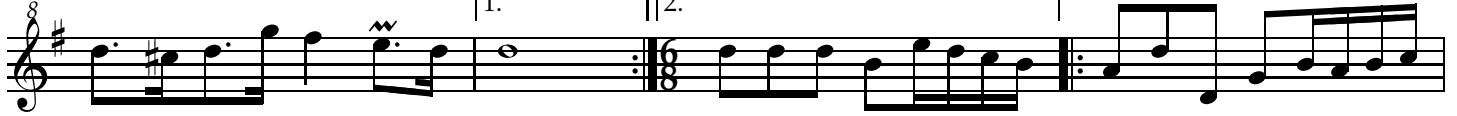
5



9



13



Allegro (♩ = ♩)

17



22



26



30



34



39



43



46+



50



54



## 2. Sarabande



9



17



25



### 3. Matelot (Gavotte)

Musical score for '3. Matelot (Gavotte)' in G major, 3/4 time. The score consists of five staves of music. The first staff is the beginning. The second staff starts at measure 6 and includes dynamic markings *p* and *f*. The third staff starts at measure 12 and includes dynamic markings *p*, *f*, and *p*. The fourth staff starts at measure 18 and includes dynamic markings *f*, *p*, and *f*. The fifth staff starts at measure 24 and includes dynamic markings *p* and *f*. The piece concludes with a double bar line and repeat dots.

### 4. Minuet

Musical score for '4. Minuet' in G major, 3/4 time. The score consists of four staves of music. The first staff is the beginning. The second staff starts at measure 8 and includes a trill (trill symbol) over a note. The third staff starts at measure 15. The fourth staff starts at measure 23 and includes a trill (trill symbol) over a note. The piece concludes with a double bar line and repeat dots.

## 5. Bourrée



Musical score for Bourrée, consisting of five staves of music in G major (one sharp) and 3/4 time. The score includes measure numbers 7, 14, 21, and 28. The music features a mix of eighth and sixteenth notes, with some trills and slurs. The piece concludes with a double bar line and repeat dots.

## 6. Rigaudon



Musical score for Rigaudon, consisting of four staves of music in G major (one sharp) and 3/4 time. The score includes measure numbers 8, 16, and 23. The music is characterized by a rhythmic pattern of eighth and sixteenth notes. A trill (tr) is indicated above a note in the first staff. The piece concludes with a double bar line and repeat dots.

## 7. Minuet

Musical score for Minuet, measures 1-22. The piece is in G major and 3/4 time. It consists of five staves of music. Measure 14 includes a dynamic marking of *pp*.

## 8. Gigue

Musical score for Gigue, measures 1-21. The piece is in G major and 6/8 time. It consists of five staves of music. Measure 11 includes dynamic markings of *p* and *f*.

# OVERTURE AND SUITE

from *Rodrigo* (1707)

HWV 5

Arranged for Recorders by R. D. Tennent

G. F. Handel (1685–1759)

## 1. Overture

Alto Recorder

Largo (♩ = 50)

7

12

18

23

28

33

38

44

51

Allegro (♩ = ♩)

*p* *f*

*p* *f*

1. 2.

## 2. Sarabande

© R. D. Tennent 2019 Licensed under a Creative Commons Attribution-Share Alike license.

8

16

24

3. Matelot (Gavotte)

6

12

18

24

#### 4. Minuet



10



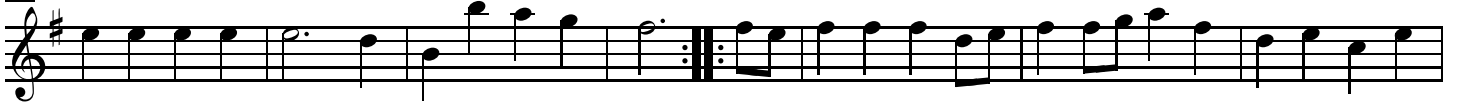
21



#### 5. Bourrée



7



14



21



28





## 6. Rigaudon

Musical score for Rigaudon, measures 1-24. The piece is in G major and 2/4 time. It consists of three staves of music. The first staff contains measures 1-7. The second staff contains measures 8-15, starting with a repeat sign. The third staff contains measures 16-24, ending with a double bar line and repeat dots.

## 7. Minuet

Musical score for Minuet, measures 1-19. The piece is in G major and 3/4 time. It consists of three staves of music. The first staff contains measures 1-9, ending with a repeat sign. The second staff contains measures 10-18. The third staff contains measures 19-19, ending with a double bar line and repeat dots.

## 8. Gigue

Musical score for Gigue, measures 1-20. The piece is in G major and 6/8 time. It consists of four staves of music. The first staff contains measures 1-6. The second staff contains measures 7-12, starting with a repeat sign. The third staff contains measures 13-19. The fourth staff contains measures 20-20, ending with a double bar line and repeat dots.

# OVERTURE AND SUITE

from *Rodrigo* (1707)

HWV 5

Arranged for Recorders by R. D. Tennent

G. F. Handel (1685–1759)

## 1. Overture

Tenor Recorder

Largo (♩ = 50)

6

11

16

23

28

34

39

45

52


Allegro (♩ = ♩)

## 2. Sarabande



Musical score for Sarabande, 3/4 time signature, key of D major. The score consists of four staves of music. The first staff is the beginning. The second staff starts at measure 8 and includes a repeat sign. The third staff starts at measure 16. The fourth staff starts at measure 24 and ends with a double bar line and repeat dots.

## 3. Matelot (Gavotte)



Musical score for Matelot (Gavotte), 6/8 time signature, key of D major. The score consists of five staves of music. The first staff is the beginning. The second staff starts at measure 6. The third staff starts at measure 12 and includes a repeat sign. The fourth staff starts at measure 18. The fifth staff starts at measure 24 and ends with a double bar line and repeat dots.

#### 4. Minuet



10



21



#### 5. Bourrée



6



12



18



23



29



### 6. Rigaudon

Musical score for Rigaudon, measures 1-23. The piece is in 2/4 time and G major. It consists of four staves of music. The first staff contains measures 1-7. The second staff starts at measure 8 and includes a repeat sign at the beginning. The third staff starts at measure 15. The fourth staff starts at measure 23 and ends with a double bar line and repeat dots.

### 7. Minuet

Musical score for Minuet, measures 1-19. The piece is in 3/4 time and G major. It consists of three staves of music. The first staff contains measures 1-8. The second staff starts at measure 9 and includes a repeat sign at the beginning. The third staff starts at measure 19 and ends with a double bar line and repeat dots.

### 8. Gigue

Musical score for Gigue, measures 1-20. The piece is in 6/8 time and G major. It consists of four staves of music. The first staff contains measures 1-6. The second staff starts at measure 7 and includes a repeat sign at the beginning. The third staff starts at measure 13. The fourth staff starts at measure 20 and ends with a double bar line and repeat dots.

# OVERTURE AND SUITE

from *Rodrigo* (1707)

HWV 5

Arranged for Recorders by R. D. Tennent

G. F. Handel (1685–1759)

## 1. Overture

Bass Recorder

Largo (♩ = 50)

6

11

16

24

30

36

41

47

52

Allegro (♩ = 60)

## 2. Sarabande



Musical score for Sarabande, bass clef, 3/4 time, key of D major. The score consists of four staves of music. The first staff starts with a treble clef and a 3/4 time signature. The second staff begins with a box containing the number 8. The third staff begins with a box containing the number 16. The fourth staff begins with a box containing the number 24. The piece concludes with a double bar line and repeat dots.

## 3. Matelot (Gavotte)



Musical score for Matelot (Gavotte), bass clef, 2/4 time, key of D major. The score consists of five staves of music. The first staff starts with a treble clef and a 2/4 time signature. The second staff begins with a box containing the number 6. The third staff begins with a box containing the number 12. The fourth staff begins with a box containing the number 18. The fifth staff begins with a box containing the number 24. The piece concludes with a double bar line and repeat dots.

#### 4. Minuet



10



21



#### 5. Bourrée



5



10



15



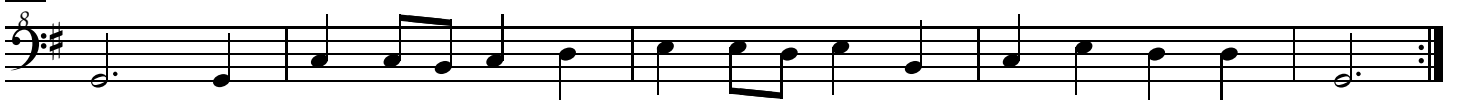
20



25



30





## 6. Rigaudon

Musical score for Rigaudon, measures 1-23. The piece is in G major (one sharp) and common time. It consists of four staves of music. The first staff (measures 1-8) is marked with an 8. The second staff (measures 9-15) begins with a repeat sign and is marked with an 8. The third staff (measures 16-22) is marked with a 16. The fourth staff (measures 23-29) is marked with a 23 and ends with a double bar line and repeat dots.

## 7. Minuet

Musical score for Minuet, measures 1-18. The piece is in G major (one sharp) and 3/4 time. It consists of three staves of music. The first staff (measures 1-8) is marked with an 8. The second staff (measures 9-17) is marked with a 9. The third staff (measures 18-24) is marked with a 18 and ends with a double bar line and repeat dots.

## 8. Gigue

Musical score for Gigue, measures 1-20. The piece is in G major (one sharp) and 6/8 time. It consists of four staves of music. The first staff (measures 1-6) is marked with an 8. The second staff (measures 7-12) is marked with a 7. The third staff (measures 13-19) is marked with a 13. The fourth staff (measures 20-26) is marked with a 20 and ends with a double bar line and repeat dots.