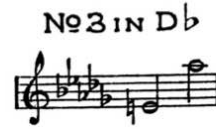


HIGH LEIGH,
SURREY ROAD,
BRIGHTON.

Dorothy Peckham



THE CURTAIN FALLS



WORDS BY

ARTHUR L. SALMON

MUSIC BY

GUY D'HARDELOT.

PRICE 2/- NET

CHAPPELL & CO LTD.

50, NEW BOND STREET, LONDON, W. 1.

NEW YORK SYDNEY

S. A. F. CHAPPELL,

86, BOULEVARD HAUSSMANN, PARIS.

Copyright, MCMXXII, by Chappell & Co. Ltd.

7364

PRINTED IN ENGLAND

THE CURTAIN FALLS.

Song.

Words by
ARTHUR L. SALMON.

Music by
GUY D'HARDELLOT.

Andante. ♩ = 60.

VOICE. *mf*
Just for a lit - tle while,

PIANO. *mf* *legato*

— we play Our parts, and an - swer to our calls; And—

then, for you and me, some day,

some day— The cur-tain falls.

Ped. * *Ped.* *

rit. *mf poco più mosso*
The plot may thrill— and hold us fast, ——— Or

mf poco più mosso
Ped. * *Ped.* * *Ped.* * *Ped.* *

be a dis - mal thing ——— that palls: ———

ff
Ped. * *Ped.* * *Ped.* * *Ped.* *

f *agitato*

It will not mat - ter when at last, at

f *agitato*

R.H.

ff *allarg.* *a tempo* *p*

last The cur-tain falls. O

f *ff colla voce* *a tempo* *f* *rit.*

Tempo I.

con tenerezza

love, I shall not lis - ten then — For

p legato e sostenuto

con due

cla - mour or ap - plaus - ive calls,

This system contains a vocal line and a piano accompaniment. The vocal line is on a single staff with a treble clef and a key signature of two flats. The piano accompaniment is on two staves (treble and bass clefs). The lyrics are "cla - mour or ap - plaus - ive calls,". There are several asterisks (*) placed below the piano accompaniment staves.

But for your voice be - side me, When The cur-tain

allargando

colla voce

This system contains a vocal line and a piano accompaniment. The vocal line is on a single staff with a treble clef and a key signature of two flats. The piano accompaniment is on two staves (treble and bass clefs). The lyrics are "But for your voice be - side me, When The cur-tain". The tempo marking *allargando* is above the vocal line, and *colla voce* is above the piano accompaniment. There are several asterisks (*) placed below the piano accompaniment staves.

a tempo

falls.

f a tempo

This system contains a vocal line and a piano accompaniment. The vocal line is on a single staff with a treble clef and a key signature of two flats. The piano accompaniment is on two staves (treble and bass clefs). The lyrics are "falls.". The tempo marking *a tempo* is above the vocal line, and *f a tempo* is above the piano accompaniment. There are several asterisks (*) placed below the piano accompaniment staves.

Chappell & Co.'s New and Popular Songs

A. L. The Lass with the Delicate Air (Arne) ... E (B-2), F and G	DAVIES, H. WALFORD Hame ... Bb (Bb-2), C and D	LEONI, FRANCO The Birth of Morn ... Ep (Bb-2), F and G	QUILTER, ROGER Fairy Lullaby ... F (C-D), Ab and Bb Go, I lovely Rose ... Ep (D-2), F and Gb
AITKEN, GEORGE Maire, my Girl ... C (C-2), D and E	DE LARA, ISIDORE The Garden of Sleep ... Ab (C-2), Bb and C	LIEURANCE, THURLOW *By the Waters of Minnetonka ... F (C-D), G and A	RANSAY, HAROLD Her Name is Mary ... G (D-2) and Bb This Lovely Rose ... G (D-2) and Bb
AYLWARD, FLORENCE †Beloved, it is Morn ... C (C-2), D and F ††Love's Coronation ... E (B-2), F, G and A Song of the Bow ... E (B-2), F and G	DENZA, L. A May Morning ... D (C-D), Eb, F and G	LOHR, HERMANN Chorus, Gentlemen ... F (C-2) and Ab I wish I were a tiny Bird ... D (D-2) and F John ... D (B-2) and F Little Green Doorway ... F (C-2) and G Little Grey Home in the West ... Bb (A-D), C, D, Eb and Ep The Little Irish Girl ... Bb (Bb-2), C and D Roadways ... D (D-2), Eb and F Rose of my Heart ... Bb (Bb-2), C, D, Eb and Ep Since You Went Away ... D (B-2) and F Two Little Irish Songs Low (C-D), Med., High What a wonderful world it would be ... Ep (Bb-2), F and G †Whatever is, is best ... F (C-2), G, Ab and Bb Where my Caravan has rested ... Ep (C-2), F, G and Ab	RASBACH, OSCAR Trees ... C (A-E), D and E
BARKER, GEORGE When the Guards go marching by ... F (Bb-2) and G	ELLIS, VIVIAN If I were a Tree ... F (C-2) and G Only Encore Songs ... Med. (C-2)	LONGSTAFFE, ERNEST The Captain of the Fire Brigade ... F (C-D) Leader of the Town Brass Band ... Ep (Bb-2) and F Take of Your Coat ... Bb (Bb-2) and C The Recruit ... Ab (C-2) and Bb When the Sergeant Major's on Parade ... G (C-D) and A	REYNOLDS, GEORGE F. †Ave Maria ... D mi. (D-2)
BARKS, ETHEL †Soul of mine ... C (A-C) and D	FORSTER, DOROTHY The Dawn of a Golden Day ... Ep (Bb-2) I wonder if Love is a Dream ... F (C-2) and Ab Mifanry ... Ep (Bb-2), F and G Rose in the Bud ... Bb (C-D), C, D, Eb and Ep	LUGHBOROUGH, RAYMOND The Tune the Bos'un played ... G (D-D)	RIEGO, TERESA DEL The Davary will bring a Brighter Day ... Ep (Bb-2) and F Happy Song ... D (D-2), Eb and F †Homing ... Bb (Bb-2), C and D ††O dry those Tears ... E (B-2), F, G and A †The Reason ... F (Bb-2), F and G Sink, red Sun ... D (A-2) and F Slave Song ... D (C-2), E, F and G mi. Thank God for a Garden ... F (A-D), Ab and Bb
BATH, HUBERT Lights Out ... D (B-D)	FRIML, RUDOLF Love Everlasting ... Bb (A-F) and D	LUCAS, CLARENCE When Stars are in the Quiet Skies ... D (B-2) and Ep	ROECKEL, J. L. Angus Macdonald ... C (Bb-2) and D
BLANEY, NORAH Mister Bear ... D (A-D) and F	GARTLAN, GEORGE The Lilac Tree ... Ep (Bb-2), F and G	MATTEI, TITO Dear Heart ... C (C-2), D and Ep	RUBENS, PAUL A. The Admiral's Yarn ... C (A-D) and D I love the Moon ... C (D-2), D, Eb and D
BLUMENTHAL, JACQUES An Erenthal Song ... Ep (Bb-2), F, G and Ab	GERMAN, EDWARD Dream O' Day Jill ... Ep (C-2) and F The English Rose ... G (C-2) and Bb Four Jolly Sailors ... C (C-2) and D Love is meant to make us glad ... D (B-2) and F O Peaceful England ... F (C-2) Waltz Song from "Tom Jones" ... C (A-D) and D The Yeomen of England ... C (C-D) and D	MESSAGER, ANDRÉ Long ago in Alcira ... F (Ab-2) and Ab	RUSSELL, KENNEDY At Santa Barbara ... G (D-D), A and Bb The Blue Dragons ... Bb (Bb-2), C and D Young Tom o' Devon ... Ab (Ab-2), Bb and G
BRANE, MAY A Little Green Lane ... C (B-2) and Ep	GIDEON, MELVILLE Dreams (the Night I make you Mine) ... C (D-2)	MONCKTON, LIONEL The Pipes of Pan ... F (C-2) and Ab	SEITZ, ERNEST The World is waiting for the Sunrise ... Bb (C-D), C and Ep
BREVILLE-SMITH, F. S. Song of the Waggoner ... C (A-D) and D There's only one England ... C (C-2), D, Eb and Ep	GOETZ, ALMA Mélisande in the Wood ... Bb (Bb-2), C and D mi.	MURRAY, ALAN Cornish Witch ... Ep (Bb-2) and G	SILESU, LEO A little love, a little kiss ... C (C-D), D and F In love—with Love ... D (D-2)
BRIDGE, FRANK Easter Hymn ... C (C-2) and Ep Isobel ... F (C-2), F# and A mi. O that it were so ... Bb (Bb-2), C and D	GORDON, SHERIDAN A Fat li' Feller wid his Mammy's eyes ... C (C-2), Ep, F and G	NELSON, HERBERT H. The Windmill ... B (A-2) and C mi.	SPOLIANSKY, MISCHA Tell Me To-Night ... Bb (Bb-2), C and D
BROWN, HUBERT Wine and Water ... D mi (A-2)	GOULD, MONK The Curfew ... Ep (A-2) and F	NEWTON, ERNEST The Drum Major ... F (C-D) and G	SQUIRE, W. H. A Chip of the Old Block ... Bb (Bb-2) and C Lighterman Tom ... Ep (Bb-2) and F Three for Jack ... F (Bb-2) and G
CAPEL, J. M. Lorraine, Lorraine, Lorraine Love, could I only tell thee ... C (C-2), D and F	GREEN, BERNARD The Golden Slopes of Burgundy ... C (C-2) and Ep	NOVELLO, IVOR Give me back my Heart ... G (C-2)	STUART, LESLIE The Bandolero ... Ab (Ab-2) and Bb
CAREW, MOLLY The Dorothy Perkins Rose ... Ep (D-2) and F Everywhere I look ... Ep (Bb-2) F and G Love's a Merchant ... Ep (C-2) and F Love's a Merry Auctioneer ... F (C-2) and G The Market ... F (C-2) and G The Piper of Love ... Ep (Bb-2) and F Spring's a-coming to Town ... Ep (Bb-2) and F Spring's looking out of her Window ... Ep (D-2) and F Tiptoe ... C (C-2) and Ep	HAMBLIN, BERNARD †Cast thy Burden ... F (Bb-2) and Ab From Day to Day ... F (C-2) and Ab	O'HARA, GEOFFREY †Forward to Christ ... Bb (C-2) and C The Living God ... Low (D-2), Med., High †There is no Death ... Ep (Bb-2), F and Ab	SULLIVAN, ARTHUR Ho, Jolly Jenkin ... D (A-D) and F Poor wad'ring one ... F (C-2) and Ab Take a pair of sparkling eyes (C-2), Ep and F Thou't passing hence ... G (D-2) and Ab Woo thou'th Snowflake ... F (C-2) and G
CARNE, GERALD Here in the Quiet Hills ... C (C-2), D and F Looking Homeward ... G (C-2) and C Provence ... Ep (Bb-2), F and Ab	HARDELLOT, GUY D' Because ... Ab (C-2), Bb and C The Curtain falls ... Ab (B-2), Bb and D Dawn ... D (B-2), Ep, F and G I know a lovely Garden ... Ep (D-2), F and G I think ... Bb (C-2), C and D Wait ... Ep (C-2), F and G	OPENSHAW, JOHN Since I've seen Love in your Eyes ... F (C-D) and Ab	TATE, ARTHUR F. God Keep You ... C (E-C) The Merry-Go-Round ... Ab (Bb-2) When I Think of You ... F (Bb-2) and Ab
CELLIER, ALFRED Queen of my heart ... Ep (Bb-2) and F	HOLLIDAY, JOHN G. Four Wishes ... C (C-2) Likes and Dislikes ... C (C-2)	PEEL, GRAHAM The Early Morning ... Ep (Ab-2), F, G and A In Summertime on Bredon ... Ep (Bb-2) and F Loveliest of Trees ... D (B-2), Eb and Gb Wind of the Western Sea ... C (A-E), D, Eb and Ep	TOSTI, F. PAOLO *Beauty's Eyes ... C (A-C), Ep, E and G My Dreams ... Bb (D-2), C, D, Eb and Ep Venetian Song ... Bb (Bb-2), D, Eb and F
CLARKE, R. CONINGSBY †The Blind Ploughman ... C (C-2), D and F A Bowl of Roses ... Bb (Bb-2), C, D and E Red Devon by the Sea ... C (C-2) You'll git heaps o' lickin's ... G (B-2)	JOHNSON, J. G. Trav'lin' all alone ... F (C-D) and Ab	PHILLIPS, H. LYALL A Devonshire Wedding ... C (A-D) and D The Mistress of the Master ... D (A-D) and Ep The String of Pearls ... Ep (C-2), F and G	TOURS, FRANK E. Mother o' mine ... Bb (C-D) and D
CLUTNAM, G. H. Come to the Dance (Founded on Weber's "Invitation to the Waltz") ... D (B-2) and Ep	JOHNSON, NOEL Gray Days ... F (C-D), G and Ab	PHILLIPS, MONTAGUE F. The Apple Tree Fairy ... Ep (Bb-2) and F April is a Lady ... D (C-2), Ep and F Butterfly Wings ... F (C-2), G and Ab The Dawn has a Song ... Bb (C-2), C and D Early in the Morning ... D (C-2), F and G The Enchanted Forest ... C (C-2) and D The Fishermen of England ... Bb (Bb-2) and C Nightfall at Sea ... Bb (A-2), D, Eb and Ep O Ship of my Delight ... G (A-D), Bb and C Sing, Joyous Bird ... C (D-2) and D The Song of the Smuggler's Lass ... G mi. (C-2) and F Spring comes dancing ... D (C-2) and F The Stars ... Bb (Bb-2), C and D Starry Woods ... D (C-2), E and F mi. Wake up! ... Bb (D-2), Ep and F	WARD-STEPHENS Christ in Flanders ... Bb (Bb-2) and D
CLAY, F. I'll sing thee Songs of Araby ... Ep (Bb-2), F, G and Ab	JOHNSON, REGINALD NOEL Weep you no more, Sad Fountains ... Bb (D-2)	PHILLIPS, MONTAGUE F. The Apple Tree Fairy ... Ep (Bb-2) and F April is a Lady ... D (C-2), Ep and F Butterfly Wings ... F (C-2), G and Ab The Dawn has a Song ... Bb (C-2), C and D Early in the Morning ... D (C-2), F and G The Enchanted Forest ... C (C-2) and D The Fishermen of England ... Bb (Bb-2) and C Nightfall at Sea ... Bb (A-2), D, Eb and Ep O Ship of my Delight ... G (A-D), Bb and C Sing, Joyous Bird ... C (D-2) and D The Song of the Smuggler's Lass ... G mi. (C-2) and F Spring comes dancing ... D (C-2) and F The Stars ... Bb (Bb-2), C and D Starry Woods ... D (C-2), E and F mi. Wake up! ... Bb (D-2), Ep and F	WHITE, MAUDE VALERIE Marching along ... G (D-D) and A So we'll go no more a-roving ... C (C-2), D, Eb and E The Spring has come ... C (C-2), D and Ep Three little Songs ... Low (A-E), Med., High
COATES, ERIC Bird Songs at Eventide ... G (D-2), Ab and Bb The Fairy Tales of Ireland ... G (B-2), Ab and Bb Green Hills o' Somerset ... C (B-2) and Ep Homeward to You ... Ab (C-2) and C A House Love made for You ... Ep (C-2) and G and Me ... Ep (C-2) and G If Stars were Tears ... D (B-2) and Ep I heard you singing ... Bb (A-2), C and Ep I pitch my lonely Caravan ... D (B-2), Ep and F Little Lady of the Moon ... Ep (Bb-2), F and G Our little Home ... F (C-2) and G Sea Rapture ... C (C-2) and Ep Stars and a Crescent Moon ... F (D-2) and G	KEEL, FREDERICK Helen of Kiroonnell ... D mi. (A-D) To-morrow ... Bb (D-2)	WILSON, H. LYALL A Devonshire Wedding ... C (A-D) and D The Mistress of the Master ... D (A-D) and Ep The String of Pearls ... Ep (C-2), F and G	WOOD, HAYDN A Brown Bird singing ... D (C-2), F, G and Ab Courage ... G (D-2) and A Do you know my Garden? ... C (C-2) and Ep †God make me kind ... D (Bb-2) and F Here's a Happy Day ... C (C-2) and Ep I look into your Garden ... D mi (A-D) and E mi I look into your Garden ... Ep (C-2), F and Ab I love to hear you singing ... C (C-2), D and Ep It is only a tiny Garden ... C (C-2), D and Ep †I want your Heart ... Bb (C-2), C and D Love's garden of Roses ... F (C-2), G, Ab and Bb A Love Song ... D (D-2) and F O Flower Divine ... Ep (Bb-2), F and Ab †Praise ... F (C-2), G and A †Roses of Picardy ... Bb (D-2), C and D When Dawn breaks through ... Ep (Bb-2), F and Ab
COWARD, NOEL Someday I'll find you ... Ep (D-2)	LEHMANN, LIZA Cherry Hips ... Ep (D-2) Daddy's Sweetheart ... F (C-2), G and Bb Evening ... Bb (C-2) and C Good morning, Brother Sunshine ... A (A-D), C and Ep There are Fairies at the bottom of our Garden ... D (C-2) and Ep	WORLOCK, HARFORD Plumstones ... C (C-2)	M. W. (Arr. by) Hope, the Hermit ... Bb (Bb-2) † Organ Accomp.
CURRAN, PEARL G. Dawn ... Low (Bb-2), Medium and High The Compass of the first Key only is given. * Violin Accomp. † Cello Accomp.			