

Fesch

Sonatina IV

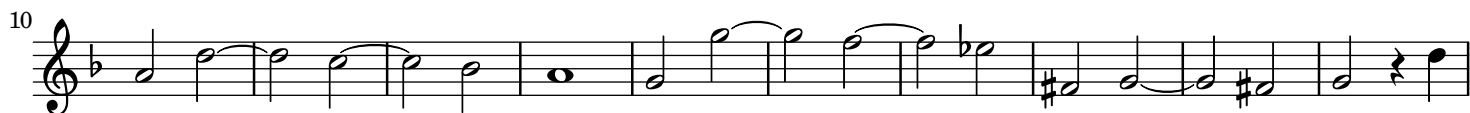
Tenor



I - Largo



II - Alla Breve



III - Presto



40



50



59



68



74



81



87



Detailed description: This image shows a page of musical notation for a single melodic line in treble clef. The key signature has one flat (B-flat). The music is divided into systems of measures. The first system (measures 40-49) begins with a repeat sign and contains a mix of eighth and quarter notes. The second system (measures 50-58) continues with eighth notes and some slurs. The third system (measures 59-67) features a change in rhythm with more quarter notes and some accidentals. The fourth system (measures 68-73) is characterized by a dense eighth-note pattern. The fifth system (measures 74-80) continues with eighth notes and includes a sharp accidental. The sixth system (measures 81-86) maintains the eighth-note pattern. The seventh system (measures 87-92) concludes with a final cadence, including a double bar line and repeat dots.