

Violine 2

# Messe in G-Dur

Op.1 Nr.1

Franz Bühler  
(1760 - 1823)

## Kyrie

Andante

5

10

14

20

26

30

34

39

45

49

2

## Violine 2

## Gloria

54 **Allegro**

Measures 54-58: Treble clef, key signature of one sharp (F#), common time. Measure 54 starts with a forte (*f*) dynamic and a dotted quarter note. The piece features a mix of eighth and sixteenth notes, with a piano (*p*) dynamic marking at the end of measure 58.

Measures 59-62: Treble clef, key signature of one sharp (F#), common time. This section consists of continuous eighth-note patterns.

Measures 63-67: Treble clef, key signature of one sharp (F#), common time. Measure 63 begins with a trill (*tr*) over a dotted quarter note, followed by a forte (*f*) dynamic marking. The music features a mix of eighth notes and chords.

Measures 68-72: Treble clef, key signature of one sharp (F#), common time. This section is characterized by a steady eighth-note accompaniment.

Measures 73-77: Treble clef, key signature of one sharp (F#), common time. Measure 73 starts with a piano (*p*) dynamic marking. The music includes chords and eighth-note patterns.

Measures 78-81: Treble clef, key signature of one sharp (F#), common time. Measure 78 features a forte (*f*) dynamic marking. The music consists of eighth-note patterns and chords.

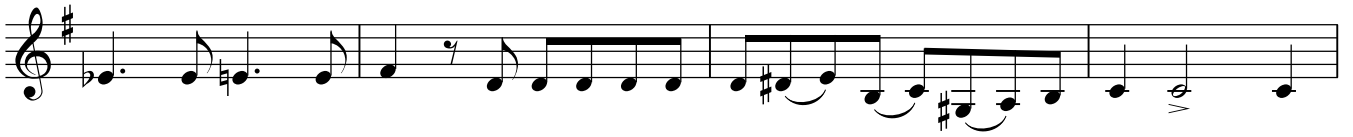
Measures 82-86: Treble clef, key signature of one sharp (F#), common time. Measure 82 starts with a piano (*p*) dynamic marking. The music includes eighth-note patterns and rests.

Measures 87-92: Treble clef, key signature of one sharp (F#), common time. This section features a series of quarter notes and rests.

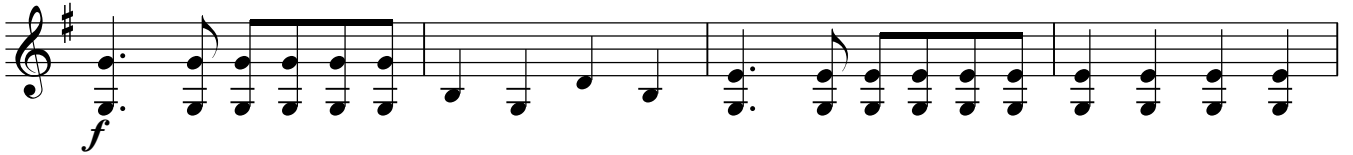
Measures 93-97: Treble clef, key signature of one sharp (F#), common time. Measure 93 starts with a forte (*f*) dynamic marking, and measure 97 ends with a piano (*p*) dynamic marking. The music consists of quarter notes and eighth notes.

## Violine 2

98



102



106



110



115



120



123



125



## Credo

131 Andante



136



141



145



150



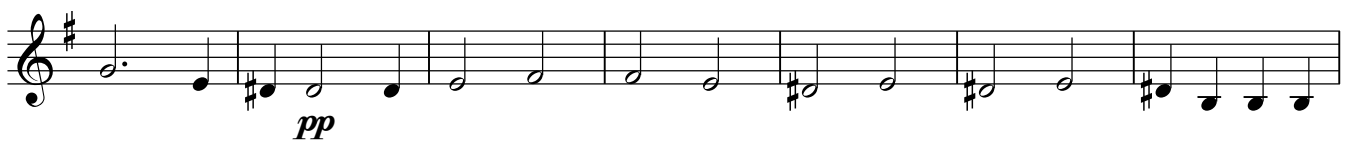
155



160



165



172



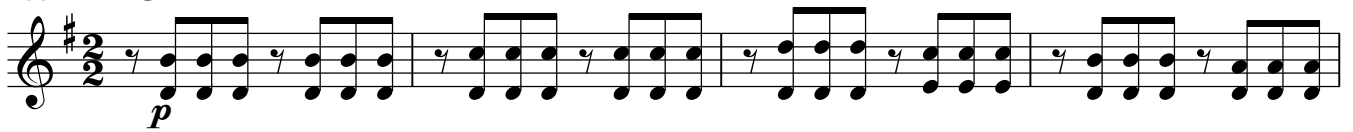
177



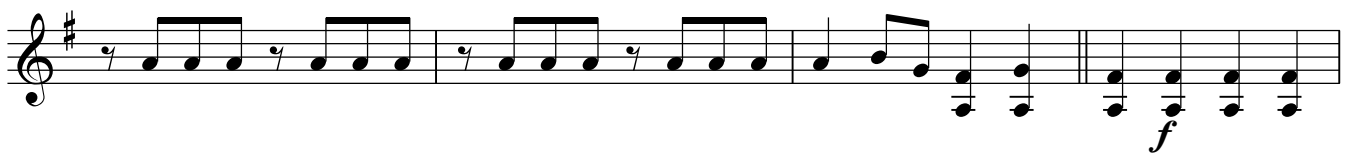
182



## Sanctus

188 **Adagio**

192



196



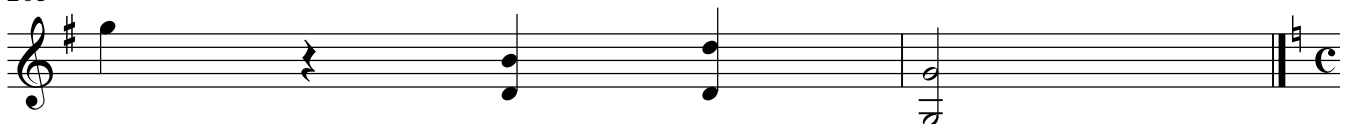
199



201



203



6

Violine 2

## Benedictus

205 **Allegro**

209



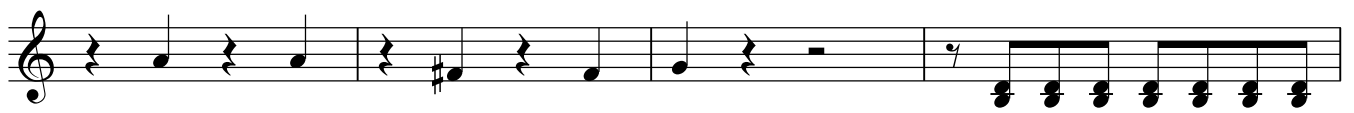
214



219



224



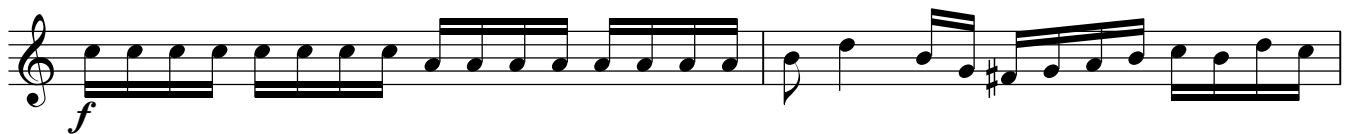
228



230



234



236



238

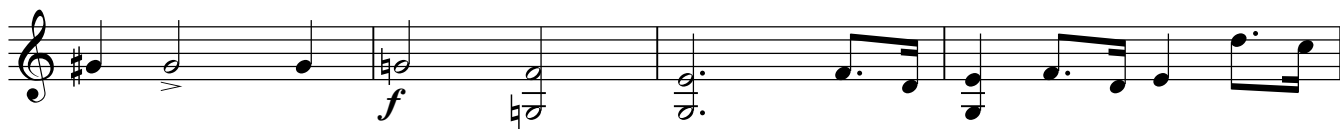


## Violine 2

243



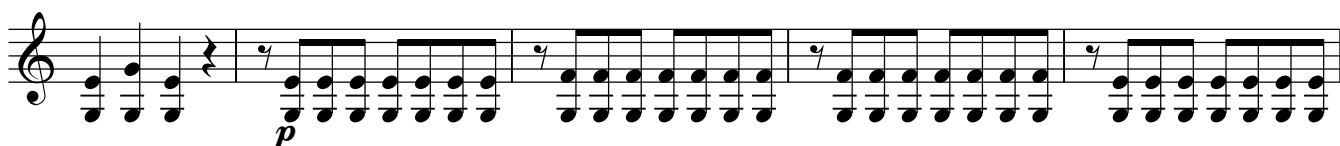
249



253



258



263



268



271



274



276



279



## Agnus Dei

281 Andante

281 *tr*  
*p*

285 *f*

288

291 *p*

295 *f*

299 *p* *tr*

303

307 *pp*

311 *f* *p*

314

317 *f* *ff*

321 *p* *f*

Detailed description: This page contains the musical score for Violin 2, measures 281 to 321, from the Agnus Dei movement of Franz Bühler's Messe Op. 1 Nr. 1. The score is written in treble clef with a key signature of one sharp (F#) and a 3/4 time signature. The tempo is marked 'Andante'. The music features a variety of dynamics including *p* (piano), *f* (forte), *pp* (pianissimo), and *ff* (fortissimo), as well as trills (*tr*). The notation includes eighth and sixteenth notes, rests, and a final double bar line at measure 321.