

Missa ex C

S. Noberti Fundatoris

J.A. Kobrich

Kyrie tacet

Christe

Adagio

Musical notation for the 'Christe' section, measures 1-31. The score is in 3/4 time and features a melodic line with various rests and notes. Measure numbers 21, 32, and 2 are indicated in boxes.

Kyrie da capo

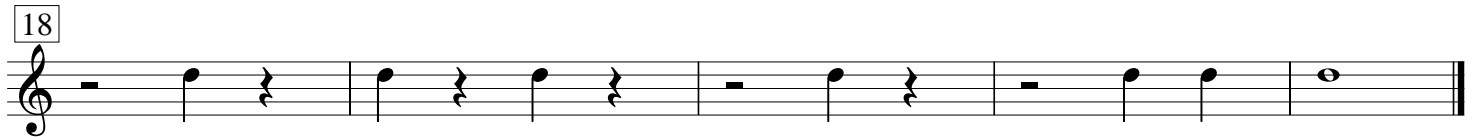
Gloria

Gloria Presto tacet

Laudamus

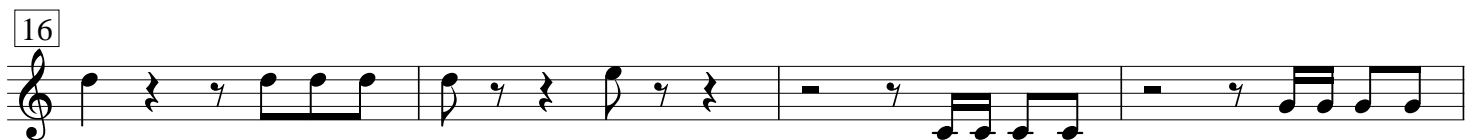
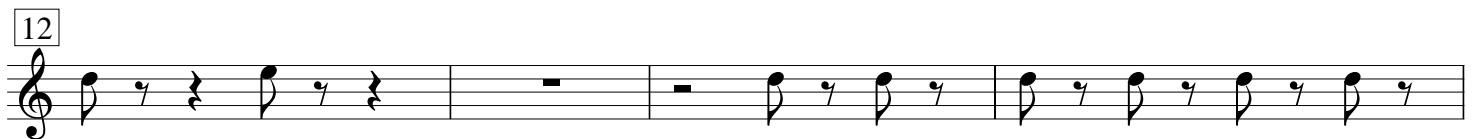
Andante

Musical notation for the 'Gloria' section, measures 1-80. The score is in 2/4 time and features a melodic line with various rests and notes. Measure numbers 7, 13, 20, 43, 53, 72, and 81 are indicated in boxes.

Qui tollis*Moderato*

Quoniam, Cum sancto tacet

Credo tacet

Sanctus*Adagio*



Benedictus, Osanna tacet

Agnus Dei Dona nobis

Adagio

Vivace



Corno in C

