

Quatuor n°2, op.4 n°2

pour 2 violons, alto et basse

Violon I

George ONSLOW

(1784-1853)

Allegro vivace
leggieramente

Musical notation for the first staff of the Violin I part, measures 1-8. The key signature is two sharps (F# and C#), and the time signature is common time (C). The music begins with a piano (*p*) dynamic. It features a series of eighth notes and quarter notes, with a crescendo (*cresc.*) leading to a forte (*f*) dynamic. The phrase ends with a *marqué* (marked) note and a *sec* (staccato) articulation.

Musical notation for the second staff of the Violin I part, measures 9-17. The music starts with a pianissimo (*pp*) dynamic and features a series of eighth notes with slurs. It includes a fortissimo (*fz*) dynamic and a crescendo (*cresc.*) leading to a forte (*f*) dynamic.

Musical notation for the third staff of the Violin I part, measures 18-25. The music begins with a piano (*p*) dynamic and features a series of eighth notes with slurs. It includes a piano (*p*) dynamic and a forte (*f*) dynamic.

Musical notation for the fourth staff of the Violin I part, measures 26-30. The music features a series of eighth notes with slurs, maintaining a consistent rhythmic pattern.

Musical notation for the fifth staff of the Violin I part, measures 31-35. The music features a series of eighth notes with slurs, ending with a *dim.* (diminuendo) dynamic marking.

Musical notation for the sixth staff of the Violin I part, measures 36-40. The music begins with a *sotto voce* (softly) dynamic and a mezzo-forte (*mf*) dynamic, featuring a series of eighth notes with slurs.

43

48

dolce e legato **rf**

56

64

cresc. **f**

70

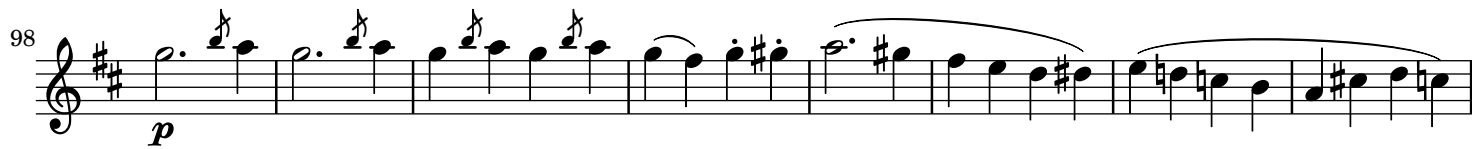
tr *dim.* **pp**

79

f

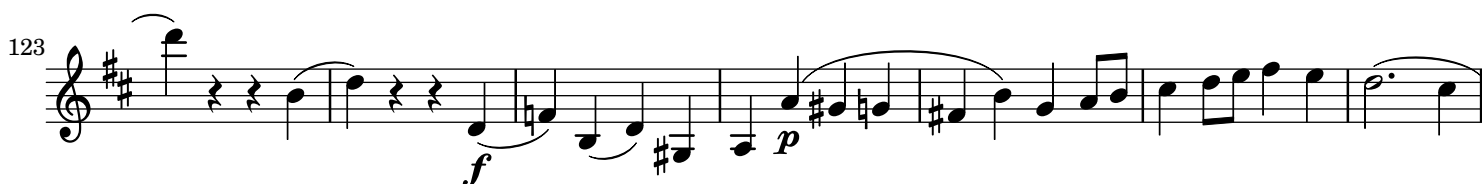
88a

p **p** **f** **4**

98 
p

106 
ff *dim.*

114 
p *f* *p* ^{sec}

123 
f *p*

130 
cresc. *f*

137 
dim. *p* *f* ^{marqué}

145 
ff *p* ^{coupé}

152 
dim. *p*

157 
dim. *p*

163 
f

169

174

4 4 1 2 3 calando 2 3 dolce e legato

180

190

cresc. f

196

dim. p

204

f

213

222

f pp cresc.

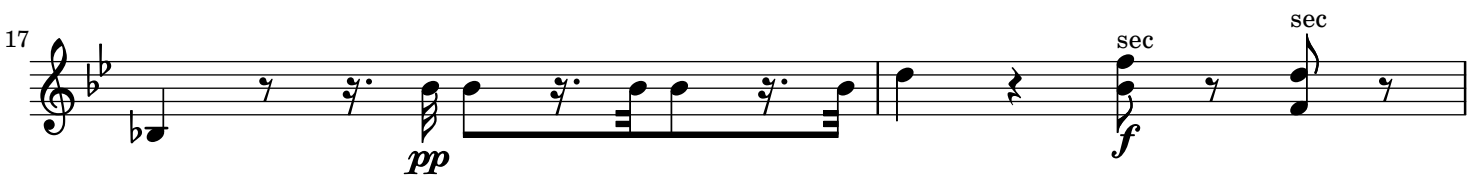
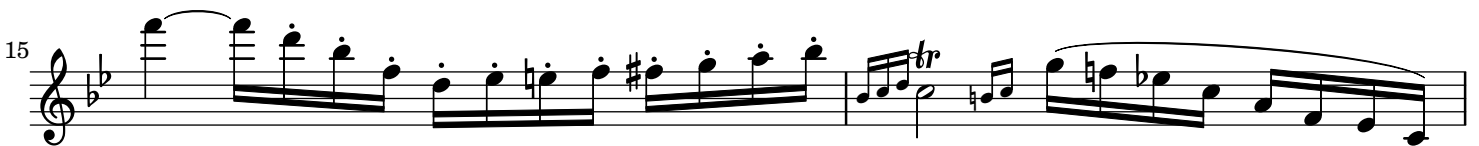
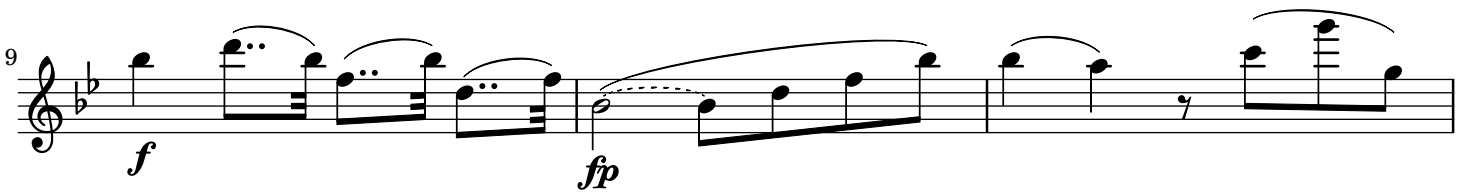
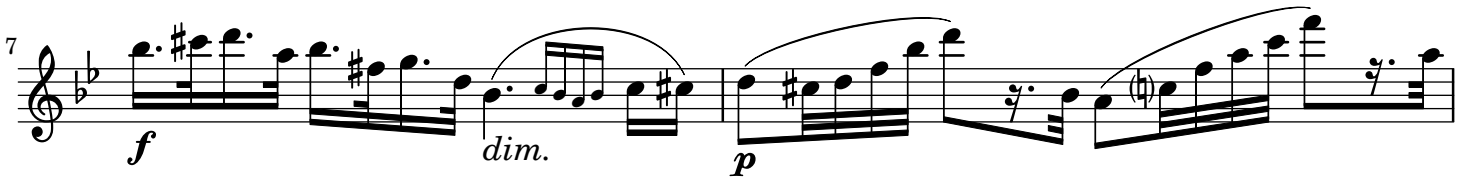
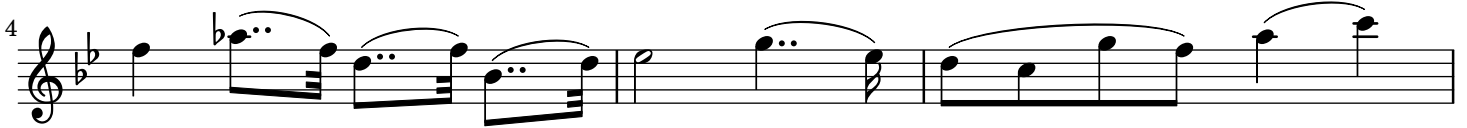
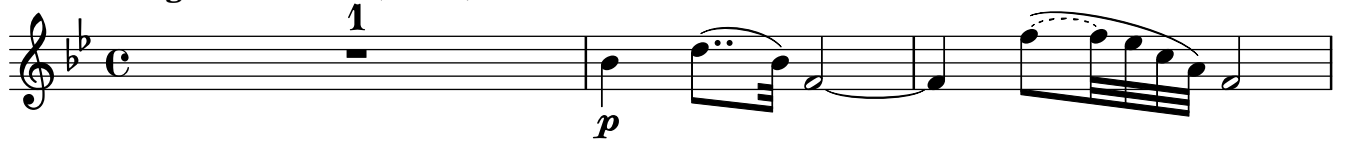
232

ff dim.

239

p cresc. f

Adagio sostenuto (♩ = 50)



19 *sec*
pp *f* *sec* *sec*

21 *sec*
pp

23 *rf* *rf*

26 *fz* *cresc.* *fz*

28 *ppp*

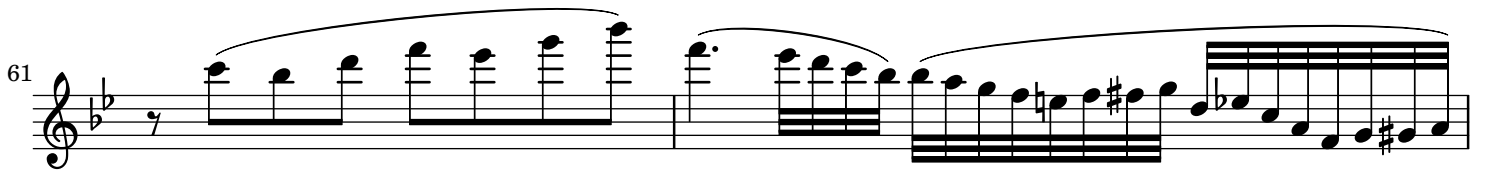
30 *fz* *f*

32 *p*

34 *p*

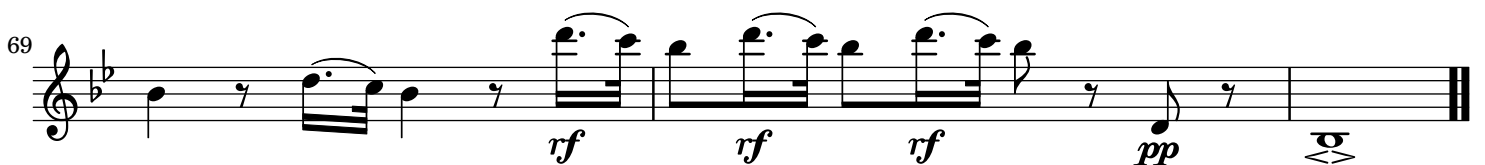
55 
cresc. *f* *p*

59 
rf

61 
rf

63 
rf

66 
rf

69 
rf *rf* *rf* *pp*

Minuetto **Allegro** ($\text{♩} = 96$)

f *p* *cresc.* *dim.* *p* *fz* *fz* *fz* *cresc.* *f* *pp* *f* *f* *rf* *f* *dim.* *p*

73 *pp*

79 **Trio** 1 *p*

85 *ff* *pp*

92 *pp* *f* *pp*

99 *(f)* *pp*

107 2 *f*

115 *p* *rf* *pp* *ppp* *legato*

125

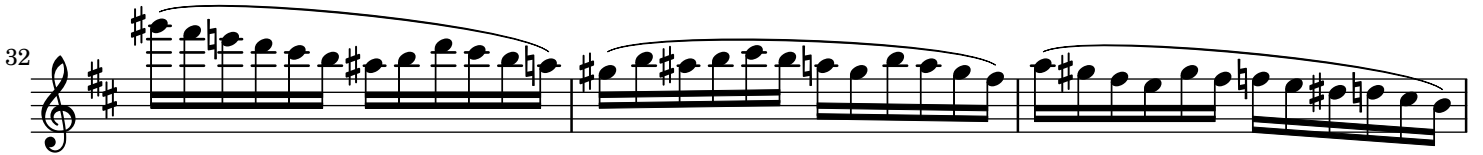
132 *f*

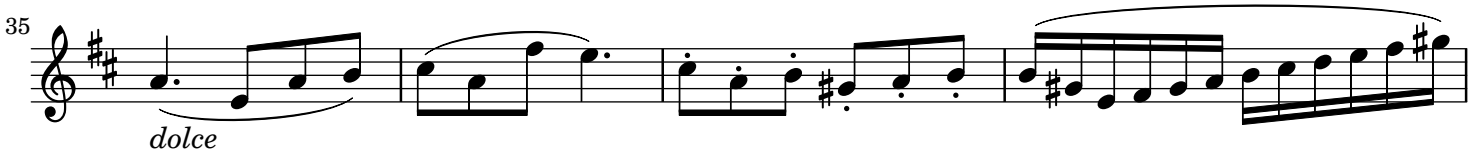
138 *pp* 1. 2. **M.D.C.**

Allegretto con moto

Finale

28 
dim.

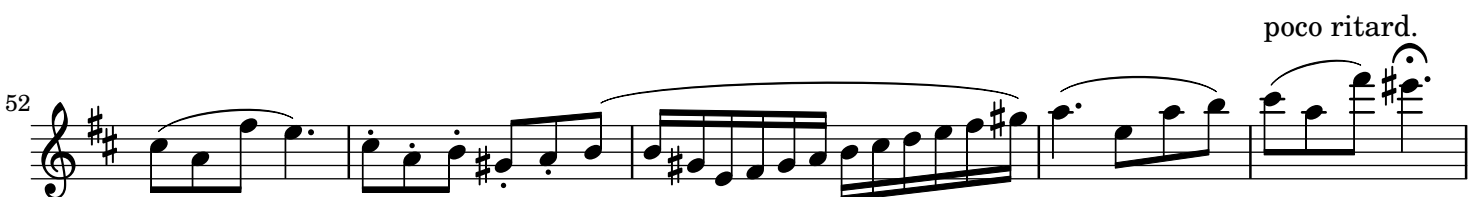
32 

35 
dolce

39 
con eleganza
rf

44 

48 

52 
poco ritard.

a tempo

57 *f* *dim.*

61 *p* *cresc.* *f*

64 *p*

68 *rf* *rf*

72 2

75 *dolce* 1 3

79

85 *rf* *fz* *fz* *fz* *fz* *fz* *fz*

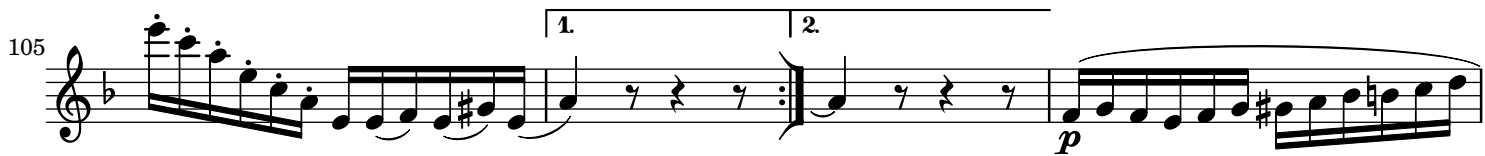
91 *fr*

95 *con energia* *f*

100



105



108



111



117



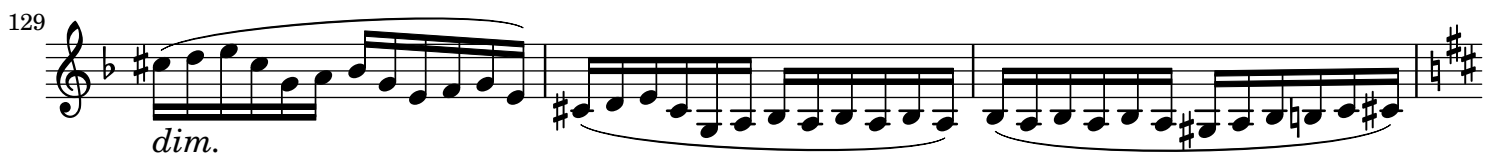
120



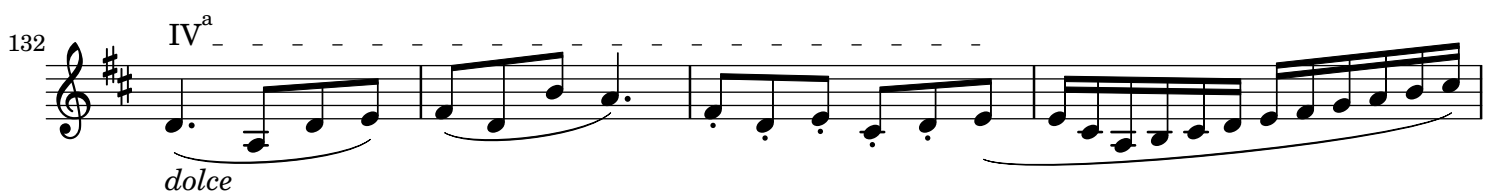
124



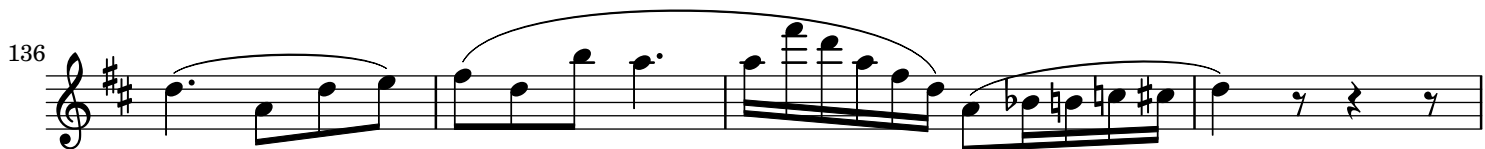
129



132



136



140 *con eleganza*

144 *dolce* IV^a

149 IV^a *poco ritard.*

154 *a tempo* *f* *dim.*

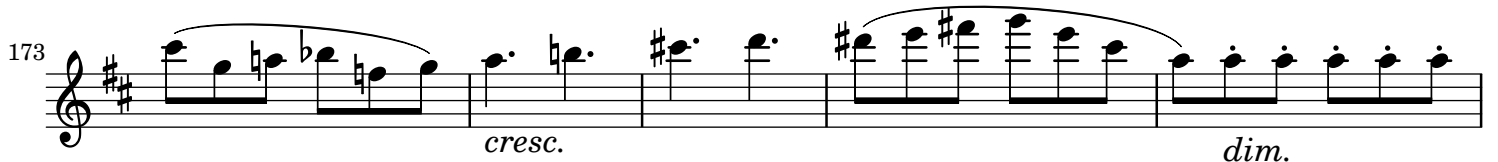
158 *p* *cresc.* *f*

161 *p*

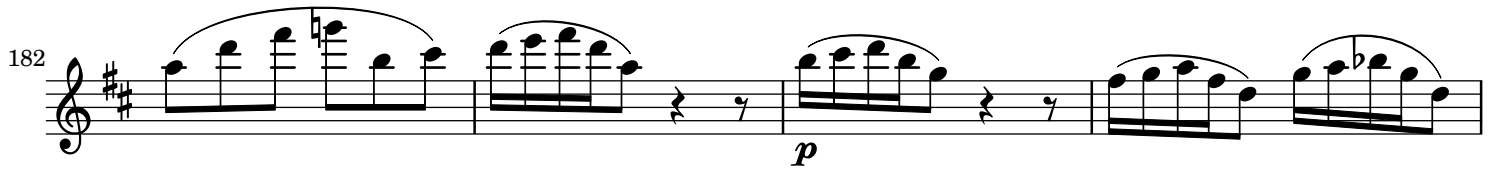
165 *rf* *rf*

169

Detailed description: This page of a musical score for Violon I contains nine staves of music, numbered 140 to 169. The key signature is two sharps (F# and C#). The music features various dynamics and articulations. Staves 140-144 are marked 'con eleganza' and 'dolce', with a first position (IV^a) indicated. Staff 149 is marked 'poco ritard.' and also indicates a first position. Staff 154 is marked 'a tempo' and starts with a forte (*f*) dynamic, followed by a decrescendo (*dim.*). Staff 158 shows a dynamic progression from piano (*p*) through a crescendo (*cresc.*) to forte (*f*). Staff 161 begins with a piano (*p*) dynamic. Staff 165 features a fortissimo (*rf*) dynamic. The score includes numerous slurs, ties, and phrasing marks.

173  *cresc.* *dim.*

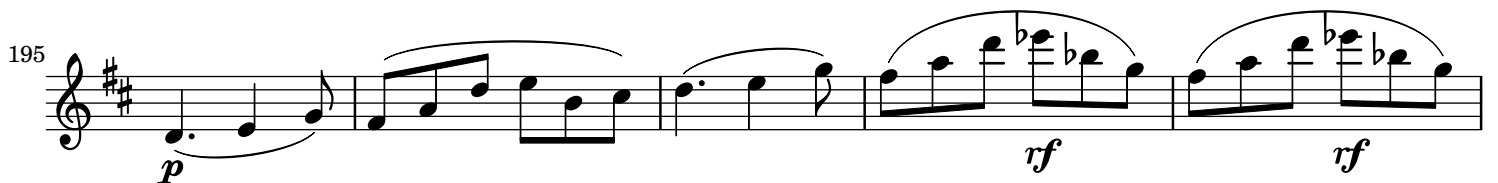
178  *p* 1 2

182  *p*

186  *cresc.* *f*

189  *poco più presto*

192  *decresc.*

195  *p* *rf* *rf*

200  *rf* *pp* *f* 3