

Kyrie

Missa in B

1

J.F.X. Sterkel

Fagott 2

Andantino

9

p *f* *f*

16

p *f*

25

6

f

40

8

55

f *f* *f* *f*

63

p

70

2

75

p *pp*

Detailed description: This block contains the musical notation for the Kyrie section of the Bassoon 2 part. It consists of seven staves of music. The first staff begins with a treble clef, a key signature of one flat (B-flat), and a 3/4 time signature. The tempo is marked 'Andantino'. The music starts with a whole rest for 9 measures, followed by a series of notes with dynamic markings of piano (p) and forte (f). There are several slurs and accents throughout. Measure numbers 16, 25, 40, 55, 63, 70, and 75 are indicated in boxes at the beginning of their respective staves. The section concludes with a double bar line at measure 75.

Gloria

Allegro molto

9

f

13

p

19

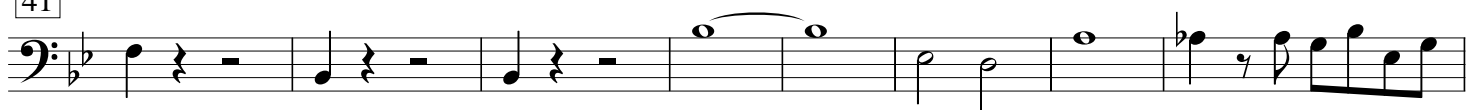
12

Detailed description: This block contains the musical notation for the Gloria section of the Bassoon 2 part. It consists of three staves of music. The first staff begins with a treble clef, a key signature of one flat (B-flat), and a common time signature (C). The tempo is marked 'Allegro molto'. The music starts with a whole rest for 9 measures, followed by a series of notes with a dynamic marking of forte (f). There are several slurs and accents throughout. Measure numbers 9, 13, and 19 are indicated in boxes at the beginning of their respective staves. The section concludes with a double bar line at measure 19.

36



41



49



54



60



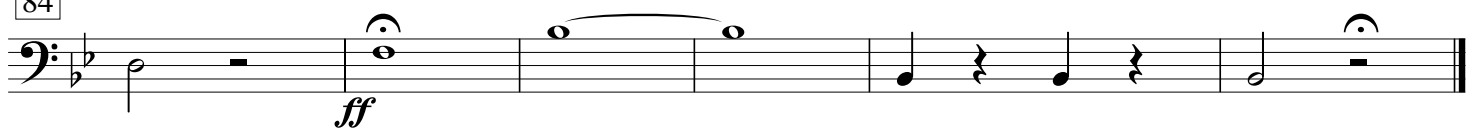
75



80



84



Credo

Andante



12



19



25



31 *fp* *f*

37 *p*

47 *p*

55 *f*

59 *pp*

Et incarnatus

65 *Larghetto* *p*

70

76 *f > p* 16

98 *Allegro maestoso* *f*

102

106 *f* 12

125



133



156



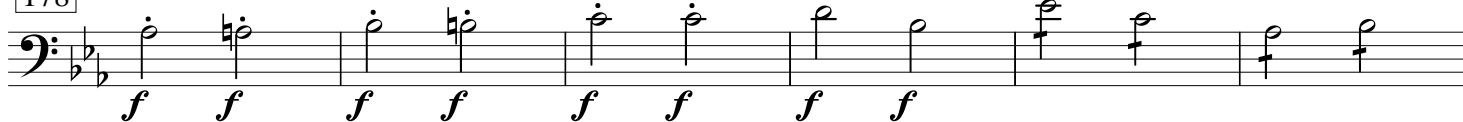
166



171



178



184

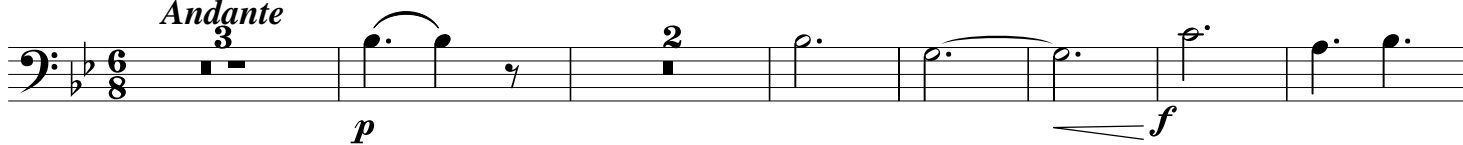


190



Sanctus

Andante



12



14



17

Allegro



Agnus Dei

Larghetto

4

12

15

Dona nobis

L'istesso tempo

19

30

34

45

58

64

69