

ARIA in B-Flat MAJOR

(from: Aria 'Su rendetemi colei', HWV 104)

Score (01':47")

for Trumpet and Organ

Georg Friedrich Händel (1685 - 1759)

Arr. Michel Rondeau

Moderato $\text{♩} = 50$

Trumpet in C

Organ

C Tpt.

Org.

C Tpt.

Org.

ARIA in B-Flat MAJOR - HWV 104 - Händel - Score

31

C Tpt.

Org.

Detailed description: This system contains measures 31 through 38. The C Tpt. part (top staff) begins with a treble clef, a key signature of two flats (B-flat major), and a common time signature. It features a melodic line with eighth and sixteenth notes, including some rests. The Organ part (bottom staves) is written in grand staff notation, with a treble clef and a bass clef. It provides harmonic support with chords and moving lines in both hands.

39

C Tpt.

Org.

Detailed description: This system contains measures 39 through 46. The C Tpt. part (top staff) continues the melodic line, ending with a double bar line and repeat dots. The Organ part (bottom staves) continues its accompaniment, also ending with a double bar line and repeat dots. The notation includes various note values and rests, maintaining the harmonic structure of the piece.

ARIA in B-Flat MAJOR

(from: Aria 'Su rendetemi colei', HWV 104)

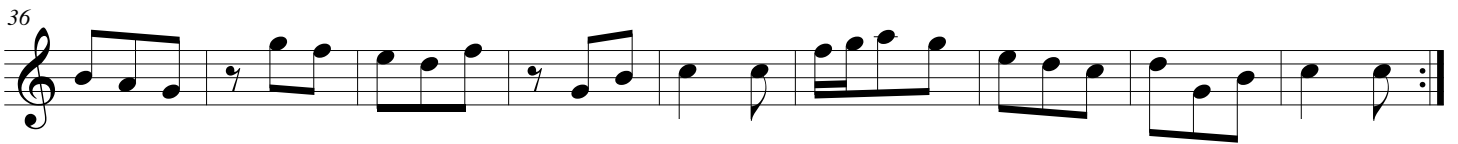
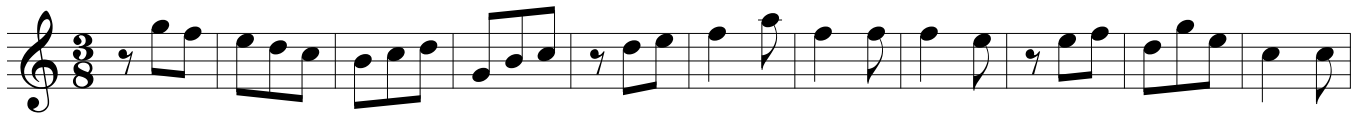
Trumpet in B \flat

for Trumpet and Organ

Georg Friedrich Händel (1685 - 1759)

Arr. Michel Rondeau

Moderato $\text{♩} = 50$



ARIA in B-Flat MAJOR

(from: Aria 'Su rendetemi colei, HWV 104)

Trumpet in C

for Trumpet and Organ

Georg Friedrich Händel (1685 - 1759)

Arr. Michel Rondeau

Moderato $\text{♩} = 50$



ARIA in B-Flat MAJOR

(from: Aria 'Su rendetemi colei', HWV 104)

for Trumpet and Organ

Organ

Georg Friedrich Händel (1685 - 1759)

Arr. Michel Rondeau

Trumpet in C

Moderato ♩ = 50

C Tpt.

Org.

C Tpt.

Org.

ARIA in B-Flat MAJOR - HWV 104 - Händel - Organ

C Tpt.

31

Org.

Detailed description: This system contains measures 31 through 38. The C Trumpet part (top staff) begins with a treble clef, a key signature of two flats (B-flat major), and a common time signature. It features a melodic line with eighth and quarter notes, including rests. The Organ part (bottom two staves) uses a grand staff with treble and bass clefs. The right hand plays a melodic accompaniment with eighth and quarter notes, while the left hand provides a bass line with quarter and eighth notes. The system concludes with a repeat sign at the end of measure 38.

C Tpt.

39

Org.

Detailed description: This system contains measures 39 through 46. The C Trumpet part (top staff) continues the melodic line with eighth and quarter notes, ending with a repeat sign at the end of measure 46. The Organ part (bottom two staves) continues its accompaniment, with the right hand playing a melodic line and the left hand providing a bass line. The system concludes with a repeat sign at the end of measure 46.