



LE CALIFE DE BAGDAD.

OPERA COMIQUE. OUVERTURE.

Contrebasse.

De BOIELDIEU - TAVAN.



Andantino.

Musical notation for the first section of the bassoon part, marked *Andantino*. It consists of five staves of music in bass clef with a key signature of one sharp (F#) and a 6/8 time signature. The first staff begins with a *p* dynamic. The second staff has a *f* dynamic. The third staff has a *p* dynamic. The fourth staff has a *mf* dynamic. The fifth staff includes a *pizz.* instruction.

Allegro. BB ou Vclle.

Musical notation for the second section of the bassoon part, marked *Allegro*. It consists of two staves of music in bass clef with a key signature of one sharp (F#) and a 2/4 time signature. The first staff includes a *cresc.* instruction and an *arco.* instruction. The second staff includes a *mf* dynamic and a *BB* instruction.

Musical notation for the third section of the bassoon part, marked *B Risoluto*. It consists of two staves of music in bass clef with a key signature of one sharp (F#) and a 2/4 time signature. The first staff begins with a *ff* dynamic.

Musical notation for the fourth section of the bassoon part, marked *C* and *D 1*. It consists of two staves of music in bass clef with a key signature of one sharp (F#) and a 2/4 time signature. The first staff begins with a *p* dynamic.

Contrebasse.

pizz.

p



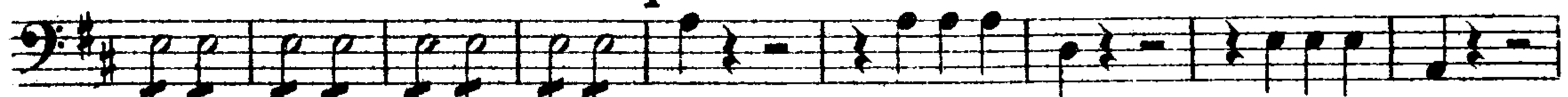
Risoluto.

E arco.

ff



F



G

3



3

H

f

ff

p



1

cresc.



B \natural

mf

mf

ff





Risoluto.

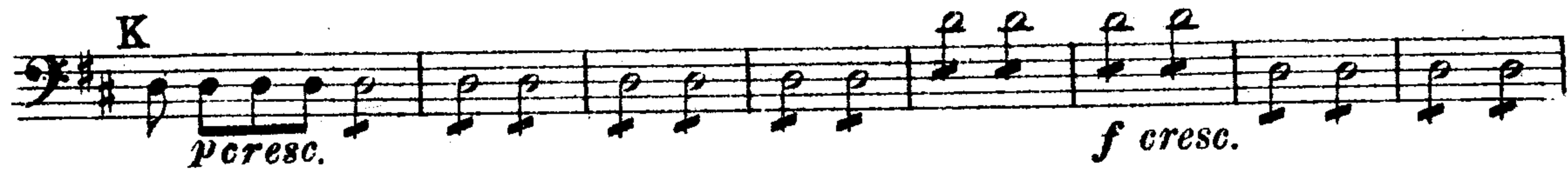
arco



K

p cresc.

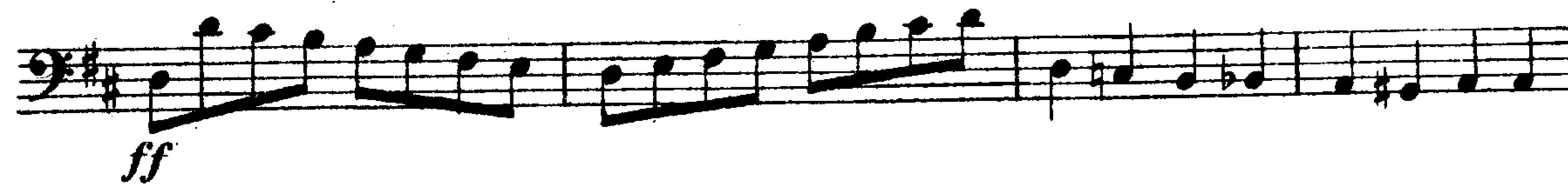
f cresc.



L

ff

p cresc.



M

