

MUSIQUE
Rés. Vm dms.

24

Don - 79-281(356)

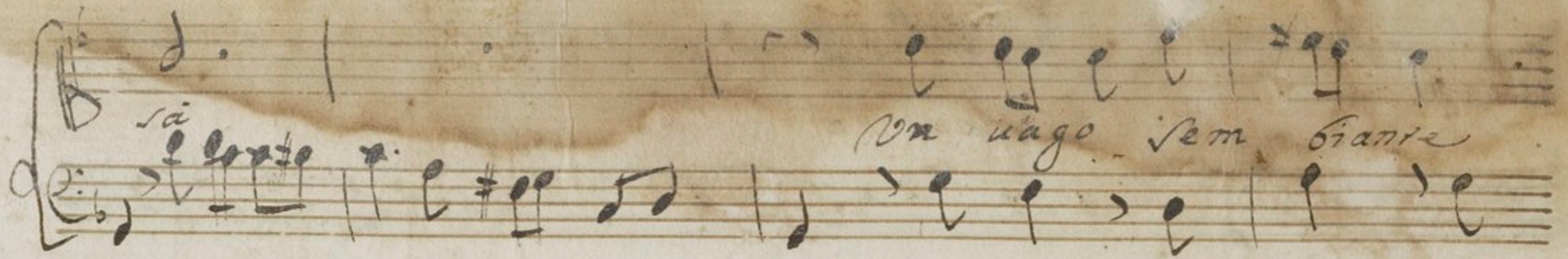
Il vivere Amante Qual pena mai sia

quest Anima mia lo prova lo va

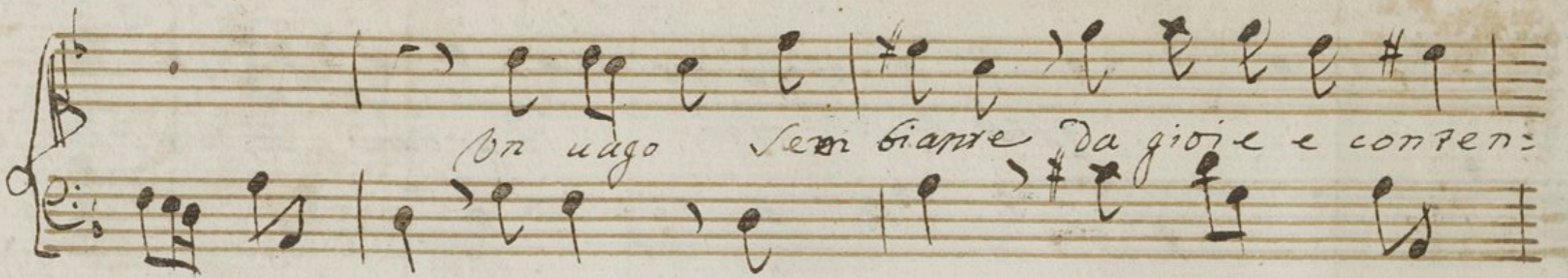
prova quest Anima mia lo va qual

Pena mai sia questani ma mia lo prova lo

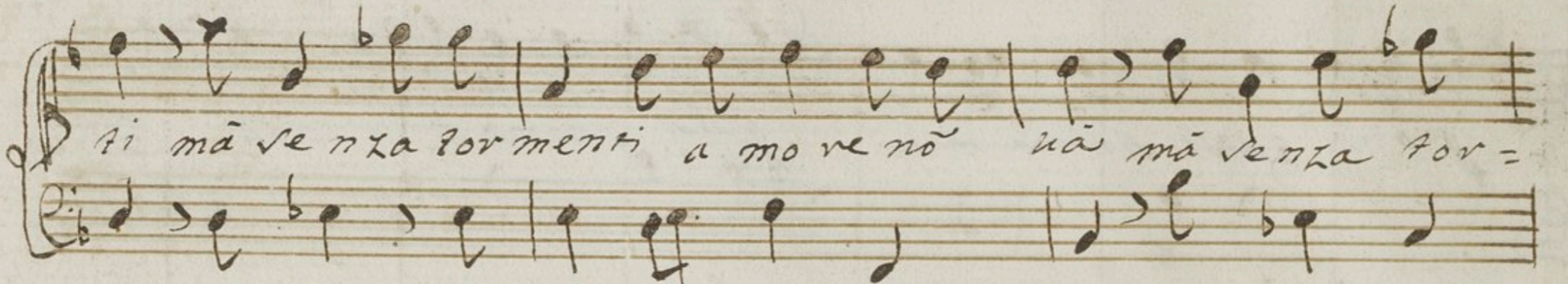
lento
sai un uago sem bianze



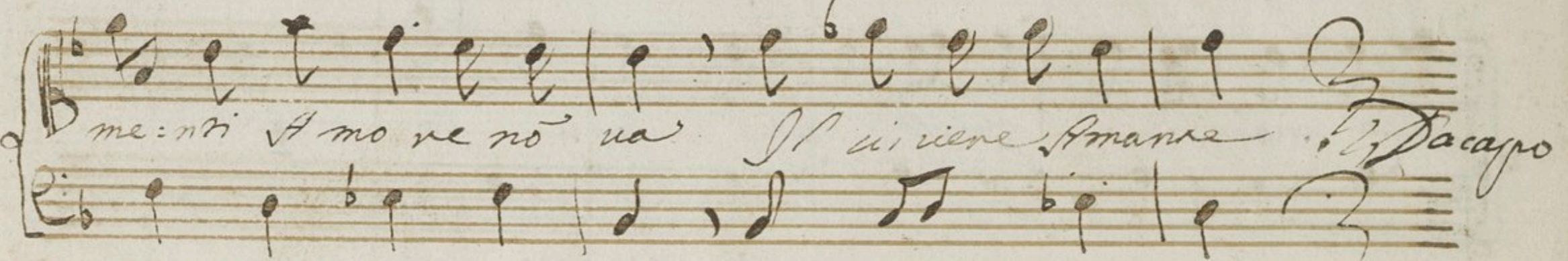
un uago sem bianze da gioie e contenti



si ma senza tormenti a mo re no' uai ma senza tor-



menti A mo re no' uai Il uiere Amante *Da capo*



io che fe. de. io ueggio in lui no' so' più me:

ta qual'fui parmi hauere un altro cor on altro

cor =

parmi ha ve = ve un altro cor e mi par più chiaro e

bello ogni fonte ogni ruscello par che spum più uet-

rosa ogni vo

rosa ed ogni fior par che spum ti più uet-

rosa ogni vo rosa ed ogni fior Orche da ag

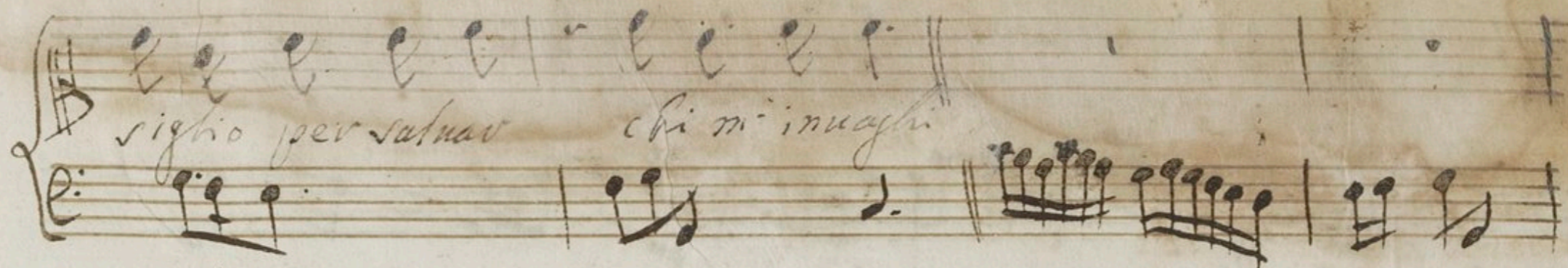
Handwritten musical notation for the first system, including a treble clef, a key signature of one sharp (F#), and a 3/8 time signature. The notation consists of two staves with various notes and rests.

Voglio ardire e no' consiglio per salvar chi m'invaghi voglio ardire

e no' consiglio e no' consiglio per salvar -

chi m'invaghi voglio ardire e no' co'

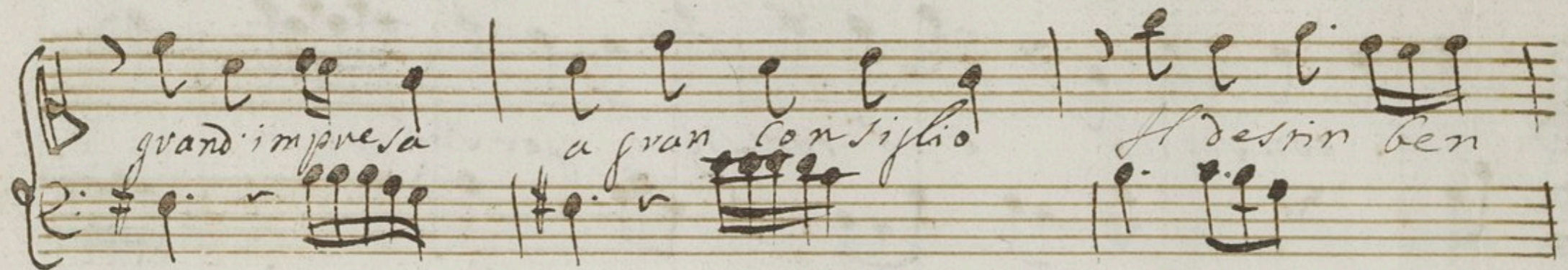
siglio per salvar chi m'innuagli



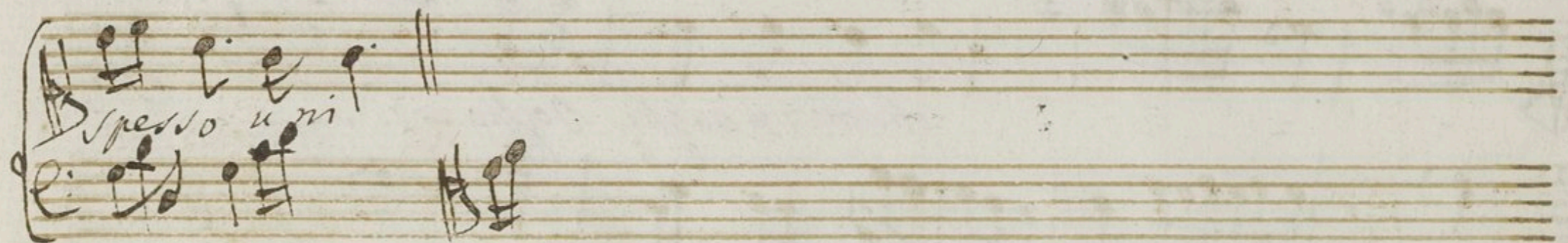
Grand'impresa a grãpe siglio Il destin ben spesso uni



grand'impresa a gran consiglio Il destin ben



spesso uni



Opie to so dimmi vi o crudel vi rpon di

no pietoso dimmi vi o crudel

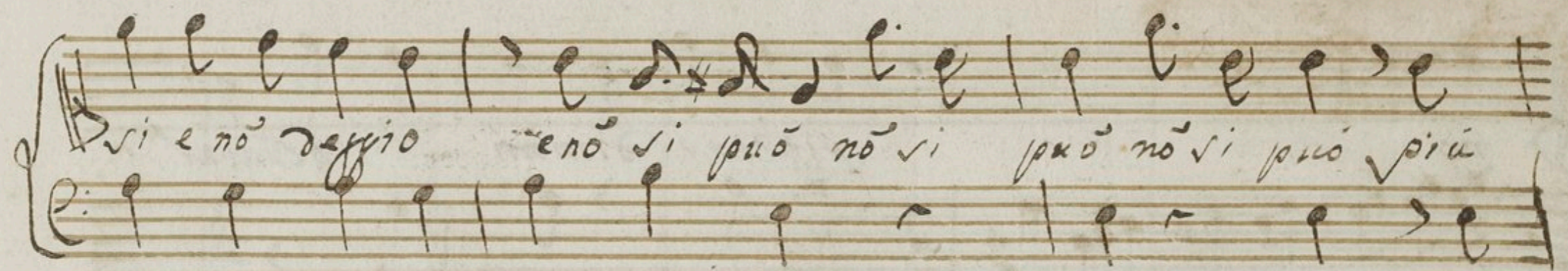
crudel crudel vi rpon di no dimmi vi rpon di

Opie to so dimmi vi o crudel vi rpon di no vi o

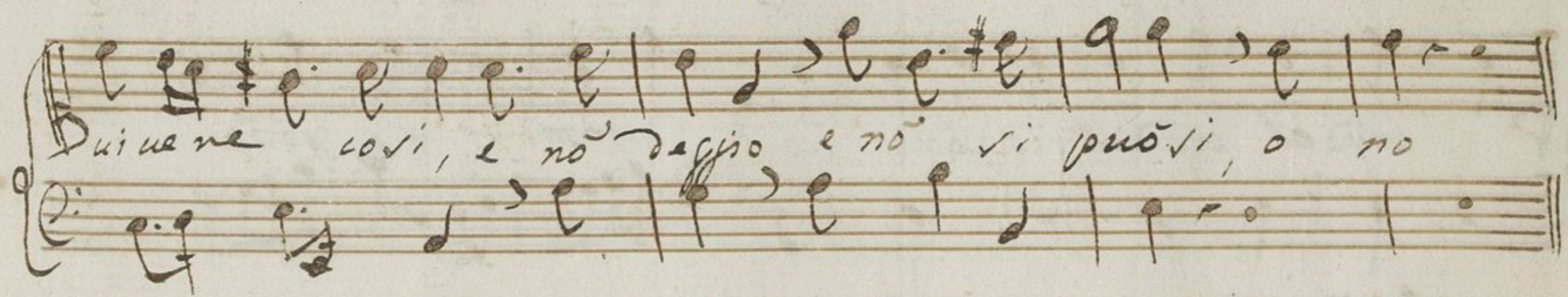
no che più vivere co:



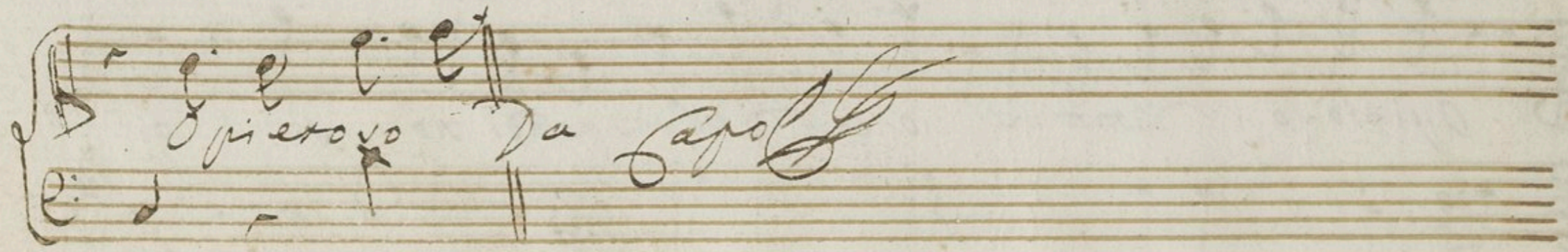
si e no' daggio e no' si può no' si può no' si può più



si uene così, e no' daggio e no' si può si, o no



si ero vo da capo



Andante

si si godro go =

Handwritten musical score for the first system. It consists of four staves. The top two staves are for the piano accompaniment, and the bottom two are for the vocal line. The vocal line includes the lyrics: *Orò si si godrò da strage fiera per che saluo il reo no campi s'andre il giusto a terra*. The music is written in a historical style with various note values and rests.

Handwritten musical score for the second system. It consists of four staves. The vocal line continues with the lyrics: *ca = = = = = de godrò si*. The piano accompaniment features dynamic markings *Alia:* and *fe*. The notation includes various rhythmic patterns and rests.

pia:

Si s'aride il giusto a terra Ca =

de

This is a handwritten musical score on aged, yellowed paper. It consists of ten staves of music. The first two staves are for a treble clef instrument, and the next two are for a bass clef instrument. The lyrics are written below the bass clef staves. The notation includes various note values, rests, and dynamic markings. The paper shows signs of age, including foxing and staining.

e ve = *drassi* andare altera, andare al =

tera la vendetta in mezzo ai lam = = = pi In mezzo a i

Handwritten musical score for the first system, consisting of five staves. The top two staves are for a vocal line, with the second staff containing the word *ria:* above the notes. The third staff is for a keyboard instrument, with the lyrics *l'ampri de le fiam =* written below it. The bottom two staves are for a string or woodwind instrument. The music is written in a historical style with various note values and rests.

Handwritten musical score for the second system, consisting of five staves. The top two staves continue the vocal line. The third staff continues the keyboard part with the lyrics *me de le spa = de de le fiam =* written below it. The bottom two staves continue the instrumental part. The notation includes various note values, rests, and dynamic markings.

Handwritten musical score for the first system, consisting of four staves. The top two staves are in treble clef, and the bottom two are in bass clef. The music is written in a historical style with various note values and rests. The lyrics "me e de te spa = de" are written across the third and fourth staves.

Handwritten musical score for the second system, consisting of four staves. The top two staves are in treble clef, and the bottom two are in bass clef. The music continues with various note values and rests. The lyrics "si si" are written across the third and fourth staves.

Handwritten musical notation on three staves. The top staff is in treble clef with a 6/8 time signature. The middle staff is in bass clef. The bottom staff is in bass clef with a 6/8 time signature. The notation includes various note values, rests, and accidentals.

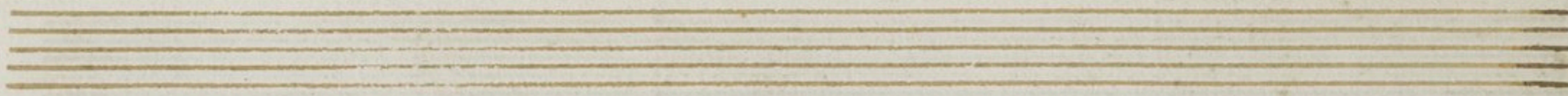
Two empty musical staves, one in treble clef and one in bass clef.

Handwritten musical notation on three staves. The top staff is in treble clef. The middle staff is in bass clef. The bottom staff is in bass clef. The notation includes various note values, rests, and accidentals. The lyrics "Lo sperar de" are written in the middle of the bottom staff.

Lo sperar de

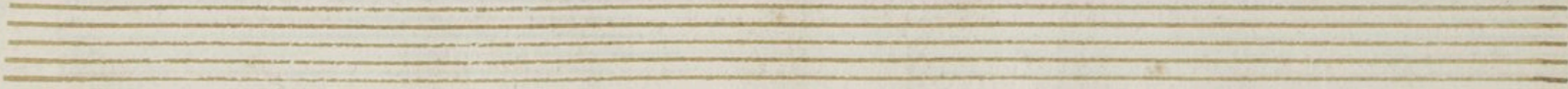
Handwritten musical score for the first system. It consists of three staves: a vocal line on a single staff with a treble clef, and a piano accompaniment on two staves (treble and bass clefs) with a brace on the left. The lyrics are written below the piano staff.

Idol mio formi in vita formi in vita e vanità. e vani



Handwritten musical score for the second system, continuing the vocal and piano parts from the first system. It consists of three staves: a vocal line on a single staff with a treble clef, and a piano accompaniment on two staves (treble and bass clefs) with a brace on the left. The lyrics are written below the piano staff.

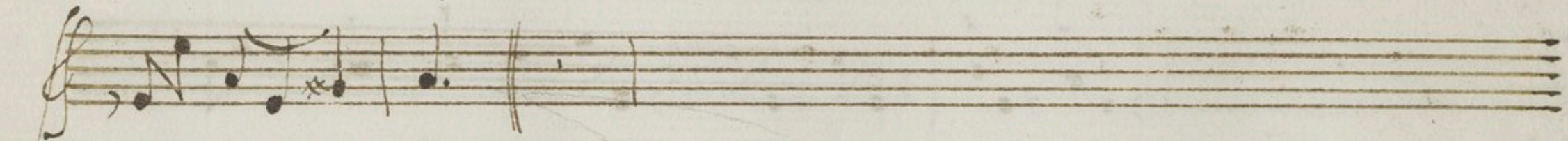
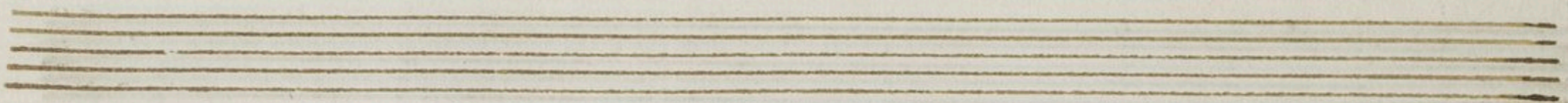
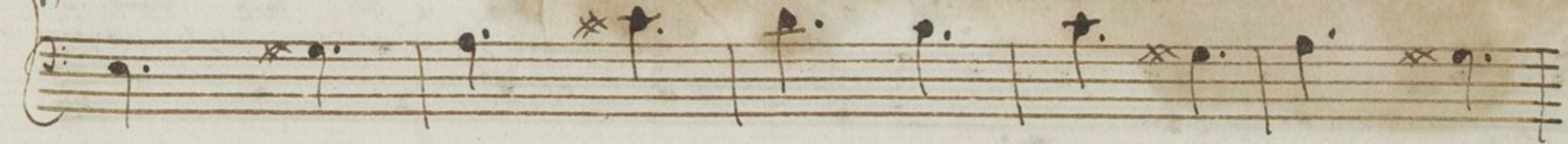
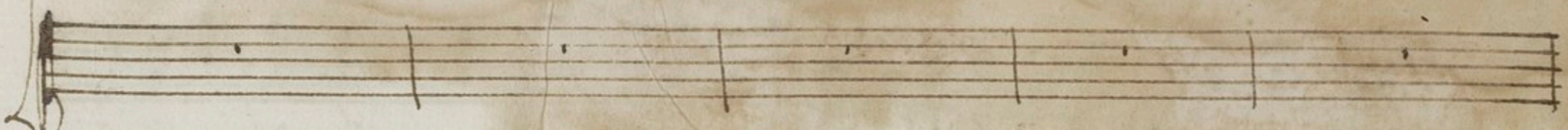
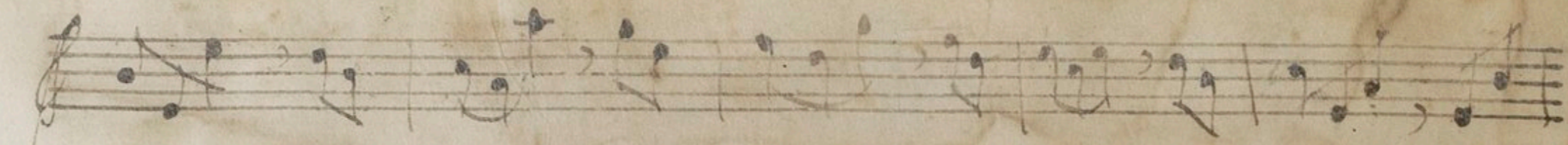
tà — — — e vanità e vani-tà



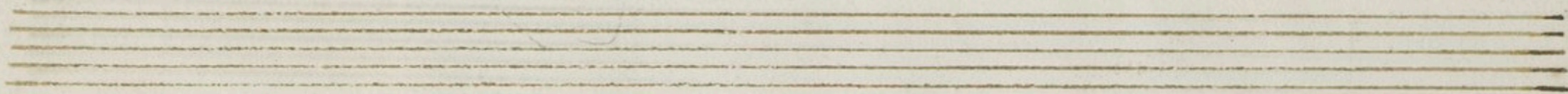
lo sperar

lo sperar de l'Idol mio fornir vita l'Idol mio fornir

vita e Vanità — — — — — e Vanità



ma sa-grò morend' anel' so tra gl' elisi ignudo spiro



rintracciar di mirto in mirto la mia bella dove sta rintracciar di

mirto in mirto la mia bella dove sta. *Da capo*



Sono bezzì e no' disprezzi

Quei che vuole una bezzà sono vezzì e no' disprezzi quei che

Vuole una bezzà : : una bezzà Sono bezzì e no' dis-

prezzi quei che vuole una bezzà : : una bezzà

Muse farò l'aria
 Vghiero per placarmi forse

The first system of the handwritten musical score consists of two staves. The upper staff is a vocal line with a treble clef and a key signature of one sharp (F#). It contains several measures of music, including a long note with a fermata. The lower staff is a piano accompaniment line with a bass clef, featuring a rhythmic pattern of eighth and sixteenth notes. The lyrics 'Muse farò l'aria' are written above the vocal line, and 'Vghiero per placarmi forse' is written below the piano line.

Vrami darò a crederci chi io vrami ma ma ma po

The second system of the handwritten musical score consists of two staves. The upper staff is a vocal line with a treble clef and a key signature of one sharp (F#). It contains several measures of music. The lower staff is a piano accompaniment line with a bass clef, featuring a rhythmic pattern of eighth and sixteenth notes. The lyrics 'Vrami darò a crederci chi io vrami ma ma ma po' are written across both staves.

vero no' varà darò a crederci chi io vrami ma

The third system of the handwritten musical score consists of two staves. The upper staff is a vocal line with a treble clef and a key signature of one sharp (F#). It contains several measures of music. The lower staff is a piano accompaniment line with a bass clef, featuring a rhythmic pattern of eighth and sixteenth notes. The lyrics 'vero no' varà darò a crederci chi io vrami ma' are written across both staves.

ma ma poi ue ro no sarà Sono Nessi

c2 cert

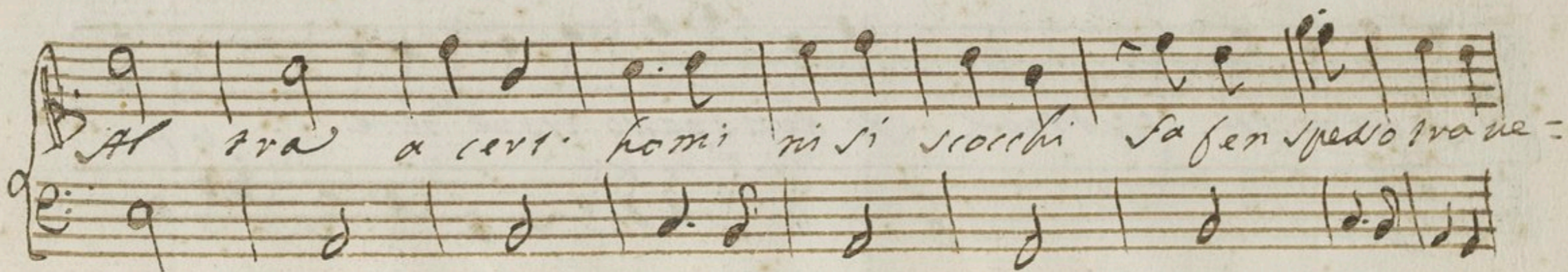
homi ni si sciocchi sa ben spesso trave dere una

femi na che scattro sa ben spesso trave dere una

Semina che scabra qualche uoglio sarsi gliocchi e a sua

Duoglia fa pa vere una rosa per un Altra e a sua

Duoglia fa pã vere ~~una~~ pa vere una co : sa per un



Altra a cert. homi nisi scocchi sa fen spedo tra ve =

deve una femina che scabra sa ben spetto ma ue-

deve una femina che scabra

Farch. io tardi di morire e fieretta e

fieretta, e no' pietà e fieretta e fieretta e

no pieto' che di viver nel mar time peggior morte no vi'

da peggior mor:

e no' s'ida' Torchio tardo'

no' lan' n'emo e por'fo ai ta' vino' in' pene e'

so co: forte vo mo randa eo offro uita no ho

speme e spe - me a p po vto

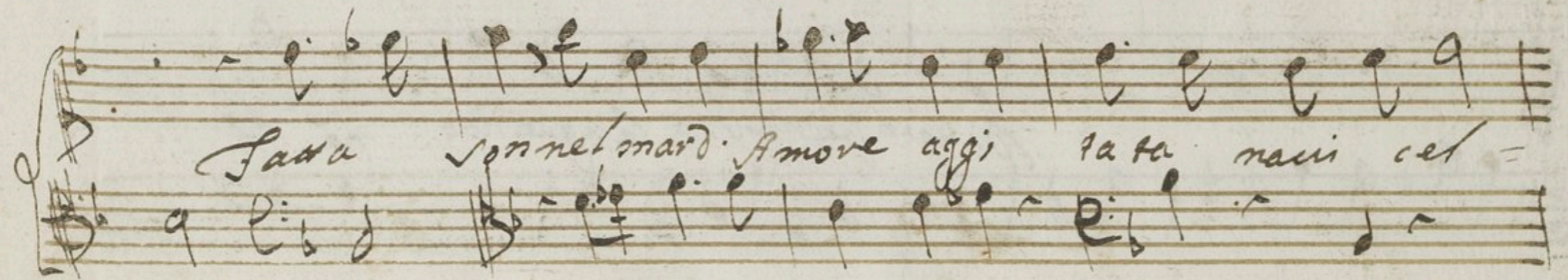
no ho speme viuo in pene vo movendo sto languendo

viuo in pene sto languendo no ho

spe me no mo ven: = do Vivin pene sto languento

no ho spe me uo more n: = do

Eia



Lava sonnet mard. Amore aggi fa fa naci cel =

Handwritten musical score on aged paper, featuring two systems of vocal and piano parts. The notation is in a historical style, likely from the 18th or 19th century. The paper shows signs of age, including yellowing and some staining.

The first system consists of two staves. The upper staff is a vocal line with lyrics: *la aggi ta = = = = = = = =*. The lower staff is a piano accompaniment with chords and single notes.

The second system also consists of two staves. The upper staff is a vocal line with lyrics: *ta ta ma uicella fava son nel mar d'Amore aggi =*. The lower staff is a piano accompaniment. A *dolce* marking is present above the vocal line.

The third system consists of two staves. The upper staff is a vocal line with lyrics: *ta = = = = = = = =*. The lower staff is a piano accompaniment.

The fourth system consists of two staves. The upper staff is a vocal line with lyrics: *ta ta fava uicella fava son nel mar d'amo re aggi --*. The lower staff is a piano accompaniment.

Handwritten musical score on aged paper, featuring four systems of staves. Each system consists of a vocal line (treble clef) and a piano accompaniment line (bass clef). The lyrics are written in Italian and are partially obscured by the musical notation.

System 1:
Vocal: *ta-*
Piano: *ta-*

System 2:
Vocal: *- ra na vi cella*
Piano: *- ra na vi cella*

System 3:
Vocal: *vienda speme da si more questa barbara pro-*
Piano: *vienda speme da si more questa barbara pro-*

System 4:
Vocal: *cella questa bar-*
Piano: *cella questa bar-*

bava procella

The Ja Lago

The image shows a single staff of handwritten musical notation on aged, yellowed paper. The notation includes a treble clef, a key signature of one flat (B-flat), and a common time signature (C). The first measure contains a complex chordal texture with many notes. The second measure contains a few notes, and the third measure contains a single note. The lyrics "bava procella" are written below the staff, and "The Ja Lago" is written in a cursive script to the right of the staff. The paper shows signs of age, including foxing and staining.

The image shows five sets of empty musical staves, each consisting of five horizontal lines. The staves are arranged vertically and are completely blank, with no notation or markings. The paper is aged and yellowed, with some foxing and staining visible.

Del Sig. Mononani.

Im parer a non dar fede a chi
fede ti giura anima mi - - ai. Siri
re si die vanto di gloria morir re d'effermi - In fe -
= de le e re disciolto in giunto sparger s'india me tante que =

re la si si si si or Dio ha lanciato de so.

e nega al mio core e pre-tade e mercede il grimo 'a =

= more e la sua gloria oblia = Impara a no dar

fede a di fede ti giura anima mi - na.

Aria

Aria

Il ve =

der mi tradi ta co = si.

Il ve =

der mi tradi = ta co - si e un tormento de pari non ha

e un tor men = = to de pari non ha e un tormen = to de

pari

pari no ha. = = eun formen = - to de pari non.

ha e se penso a di già mi tra =

di e se penso a di già mi tra-di. la mia pera più

cruda si fa = la mia pe = na più cruda si fa.

ta

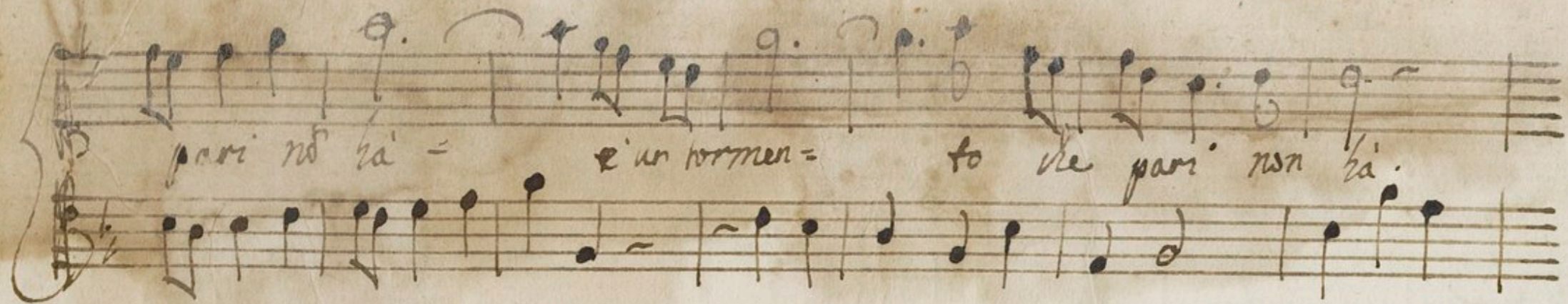
la mia pena più cruda si fa la mia pe - na più

cruda si fa = Il veder mi tra - di ta co - si

Il veder mi tra - di - ta co - si e un tormento che pari non

hai = e un tormen - to che pari nō ha e un tor mento che

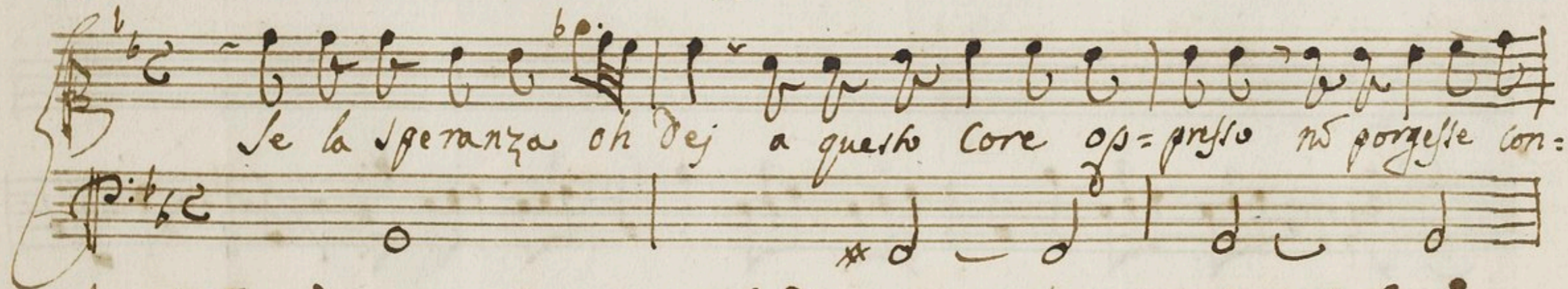
pari -



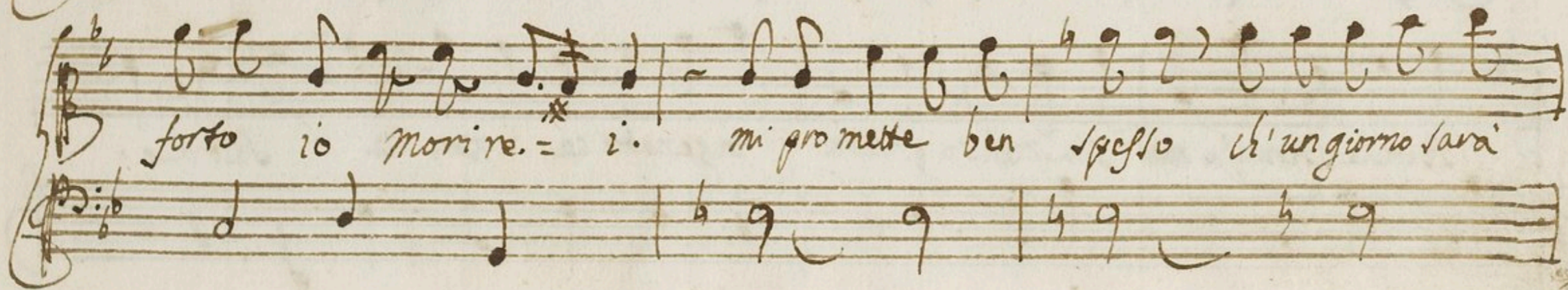
pari no' ha' = e' un tormen = to che pari non ha.



Recitativo



Se la speranza oh Dei a questo Core op = presso no' poteste con:



forte io morire. = i. mi pro mette ben spesso ch' un giorno sarai

mis

Handwritten musical notation for the first system. The vocal line (treble clef) contains the lyrics: *miò. Mi mi lascio. Soave è la lusinga e pure ò Ciel non*. The bass line (bass clef) contains rhythmic notation with notes and rests.

Handwritten musical notation for the second system. The vocal line (treble clef) contains the lyrics: *Sò s'egli il vero mi dica o pur se frega.* The bass line (bass clef) contains rhythmic notation with notes and rests.

Handwritten musical notation for the third system, featuring a treble clef staff with triplets. The notation includes several groups of three notes beamed together, with a '3' above each group.

Handwritten musical notation for the fourth system. The vocal line (treble clef) contains the lyrics: *Bende speranza ~~ti~~ sia mendo guerra. inganatrice non mi sarà.* The bass line (bass clef) contains rhythmic notation with notes and rests.

non non ingannatrice non mi sa-ra. non

non inganna-trice non mi sa-ra

in me s'avanza e ogn'or mi dice si spera spera c'auraj pietà.

spera si spera spera c'auraj pietà si spera spera c'auraj pietà

Benede speranza la menso gniera

Musical staff with treble clef, key signature of one flat, and time signature of 6/8. It contains a melodic line with several triplet markings (indicated by a '3' above the notes).

Musical staff with bass clef, key signature of one flat, and time signature of 6/8. It contains a bass line with notes and rests.

Ingannatrice = non mi sa = ra non non

Musical staff with treble clef, key signature of one flat, and time signature of 6/8. It contains a melodic line with triplet markings.

Musical staff with bass clef, key signature of one flat, and time signature of 6/8. It contains a bass line with notes and rests.

inganna trice non mi sa ra non non Inganna =

Musical staff with treble clef, key signature of one flat, and time signature of 6/8. It contains a melodic line with triplet markings.

Musical staff with bass clef, key signature of one flat, and time signature of 6/8. It contains a bass line with notes and rests.

trice non mi sa ra.

Griff-haus Leo - rescriptit 22. Mensis Aprilis
1704 Jos. W. Felix bunt. K. Hofkapellm.

Musical staff with treble clef, key signature of one flat, and time signature of 6/8. It contains a melodic line with notes and rests.

Handwritten signature or flourish at the bottom right of the page.

BIBLIOTHEQUE NATIONALE
Désinfection 1979
N° 2920

