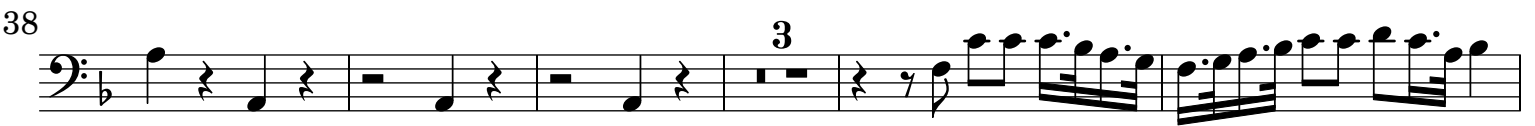


# Echo Quartetto

## Violoncello

A. Lotti (1666-1740)

### [1.] Echo



58



63



66



72



78



## [2.] Adagio



8



16



23



30



37



44



## [3.] Presto

Musical score for Violoncello, [3.] Presto. The score is written in bass clef, 3/8 time signature, and B-flat major. The piece consists of 123 measures, divided into systems of five measures each. The score includes various musical notations such as eighth notes, sixteenth notes, and triplets. The key signature is B-flat major, and the time signature is 3/8. The piece is marked 'Presto'.

Measures 1-123 are shown, with measure numbers indicated at the beginning of each system:

- System 1: Measures 1-5
- System 2: Measures 6-10
- System 3: Measures 11-15
- System 4: Measures 16-20
- System 5: Measures 21-25
- System 6: Measures 26-30
- System 7: Measures 31-35
- System 8: Measures 36-40
- System 9: Measures 41-45
- System 10: Measures 46-50
- System 11: Measures 51-55
- System 12: Measures 56-60
- System 13: Measures 61-65
- System 14: Measures 66-70
- System 15: Measures 71-75
- System 16: Measures 76-80
- System 17: Measures 81-85
- System 18: Measures 86-90
- System 19: Measures 91-95
- System 20: Measures 96-100
- System 21: Measures 101-105
- System 22: Measures 106-110
- System 23: Measures 111-115
- System 24: Measures 116-120
- System 25: Measures 121-123