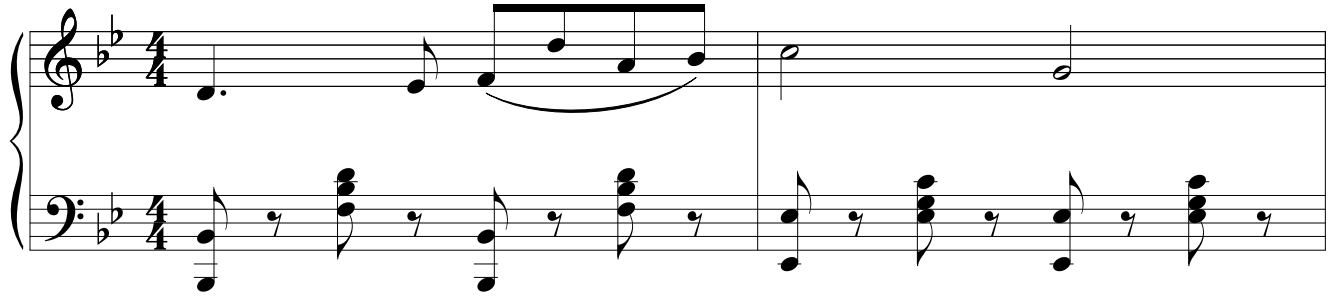


# Far Away

Words and Music by  
John Rogers Thomas

**Andante con Espressione**



9 B $\flat$  Cm/E $\flat$

Down where south - ern skies are glow - ing,  
Long she pined in tear - ful sor - row,

11 F7 B $\flat$

Like some re - gion of the blest,  
And her love - lit eyes grew dim,

13 B $\flat$  Cm/E $\flat$

Down where south - ern airs are blow - ing,  
'Till at length there came no to - mor - row,

15 F7 B $\flat$  F

Lull - ing eve - ry thought to rest, Once there dwelt a love - ly  
Life was lost in lov - ing him. Af - ter man - y years of

*cresc.*

18 B $\flat$  B $\flat$ m F

maid - en, Tun - ing man - y a mourn - ful lay,  
roam - ing, He re - turned (Oh mourn - ful day!)

*p* *cresc.*

21 F B $\flat$ m G $\flat$  N.C.

And her soul with grief was lad - en, For her love was far a -  
But no loved one hailed his com - ing, She a - las! was far a -

*p* *cresc.* *rit.*

24 F B $\flat$  C $\flat$ /E $\flat$

way. And her soul with grief was lad - en,  
way. But no loved one hailed his com - ing,

*a tempo*

27 F7 B $\flat$ /F F7 B $\flat$

For her love was far a - way.  
She a - las! was far a - way.

30 1. 2.