

Solo Violin II

L'estro Armonico
Op. 3, No. 11
RV565
Concerto Grosso in D Minor

For 2 Violins and Violoncello

ANTONIO VIVALDI

Concerto Grosso in D Minor for 2 Violins and Cello

Solo Violin II

Op. 3 No. 11 RV 565

Antonio Vivaldi

I. Allegro

Measures 1-28 of the first movement, I. Allegro. The score is written for Solo Violin II. The key signature is D minor (three flats). The time signature is 3/4. The piece begins with a forte (ff) dynamic. The melody is characterized by rapid sixteenth-note passages. Measure 28 ends with a fermata and a double bar line, followed by the instruction 'Solo Vc.'.

Adagio Spiccato Tutti

Measures 32-52 of the first movement, I. Allegro. The score is written for Solo Violin II. The key signature is D minor (three flats). The time signature is 3/4. The piece begins with a forte (ff) dynamic. The melody is characterized by rapid sixteenth-note passages. Measure 32 starts with a fermata and a double bar line, followed by the instruction 'Solo Vc.'. The tempo changes to Adagio Spiccato Tutti. The piece ends with a fermata and a double bar line, followed by the instruction 'Solo Vc.'.

54 *solì* *p* *V*

58 *V* *V*

62 *tutti*

66 *V* *V* *V* *V*

72 *tr*

76 *V* *solì* *p*

80 *V* *V* *V*

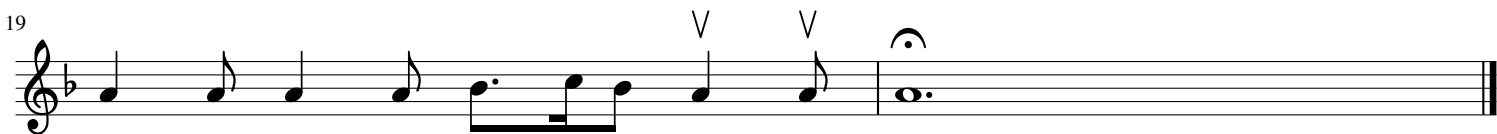
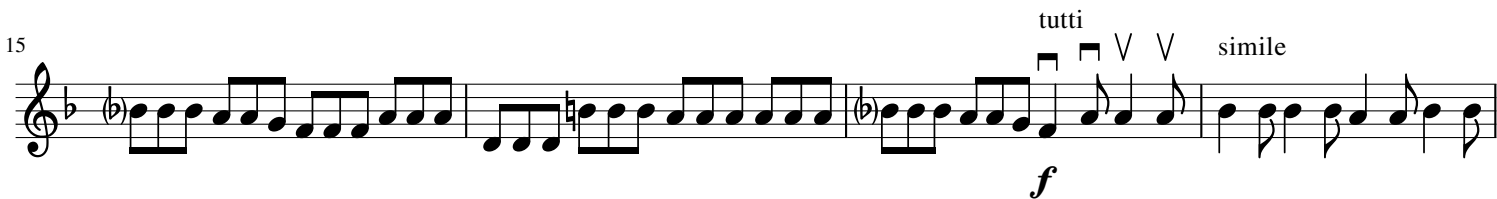
86 *tutti* *f* *V* *p*

91 *V* *f* *p* *f*

95 *V* *V*

98 *V* *V* *V* *Adagio* ♩ = 80

II. Adagio Largo e Spiccato



THIS PAGE LEFT BLANK TO FACILITATE PAGE TURNS

sol

[illegible]

14 *sol*



17

Musical notation for measure 17, featuring a treble clef, a key signature of one flat, and a complex rhythmic pattern with eighth and sixteenth notes.

20

27 Musical score for the 27th measure. The melody continues with a treble clef, a key signature of one flat (B-flat), and a 2/4 time signature. The measure begins with a quarter rest, followed by a quarter note G4, an eighth note F#4, and a quarter note E4. This is followed by a quarter rest, then a quarter note D4, an eighth note C4, and a quarter note B3. The melody then moves to a higher register with a quarter note G5, an eighth note F#5, and a quarter note E5. This is followed by a quarter rest, then a quarter note D5, an eighth note C5, and a quarter note B4. The measure ends with a quarter note A4. The word 'p' (piano) is written below the staff.

33 

[illegible]

43 soli

f

48 tutti *tr* soli *tr* tutti *tr*

53 soli *tr* *tr*

58 Solo Vln. I

61

64

66 tutti

70 V

p *f*