

Corno I (F)

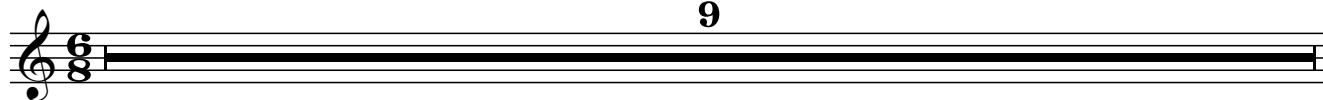
CONCERTO

for Voice and Symphonic Orchestra

Geghuni CHITCHYAN

Andante

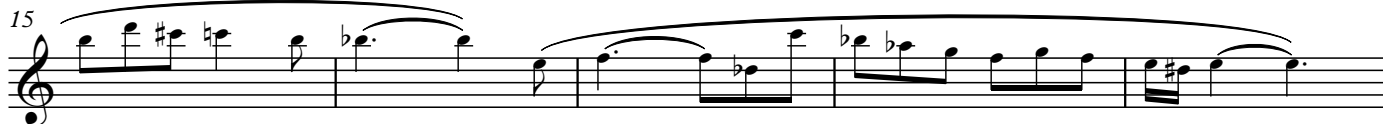
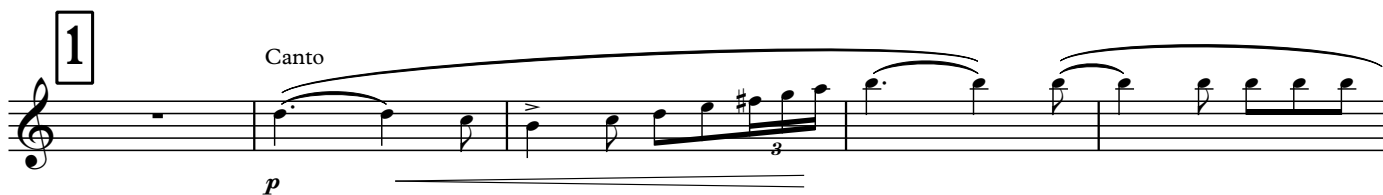
9



1

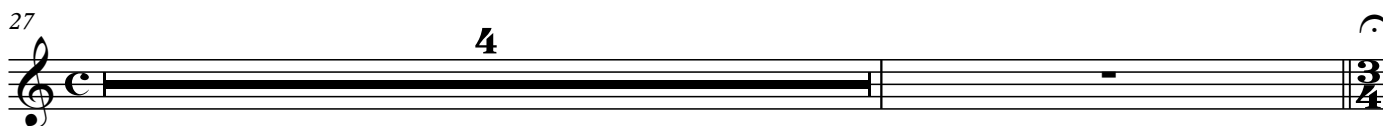
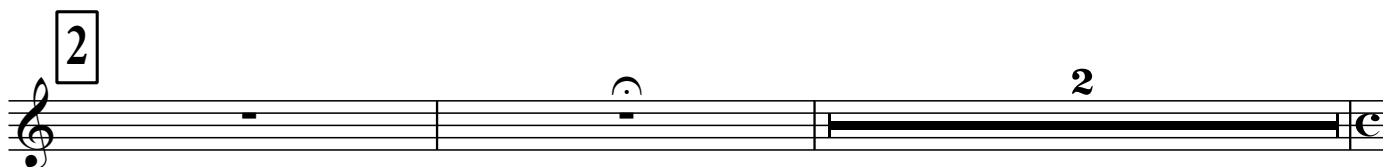
Canto

p



2

2



3 Moderato grazioso (♩. = 72)

sfp

36

sfp

40

sfp

44

sfp

48

sfp

4

sfp

59

sfp

64

sfp

5

poco a poco più mosso

sfp

75

82

6 7 8

100 8

105 4

Più mosso 9

121 poco rit.

10 a tempo 9 11 8

12 C-nelli p

148 poco rit. ppp

13 a tempo (♩ = 100) 8 14 Allegro con brio ♩ = 66 Tr. sf

162 mf

15 3 mf

16 14 17 8 18 Fg. mp

197 p sf 8

19

Musical staff for measure 19, starting with a dynamic marking of *p*. The staff contains a series of eighth notes with slurs, moving in a stepwise fashion across the staff.

Musical staff for measure 212, continuing the melodic line from the previous staff. It features a crescendo hairpin and ends with a double bar line and a repeat sign.

20

Musical staff for measure 220, marked with a '2' above the staff, indicating a second ending. The staff shows a series of rests in 6/8 time.

Musical staff for measure 221, featuring sixteenth notes with accents (+) and dynamic markings of *sf*. The notes are grouped in pairs.

Musical staff for measure 224, continuing the sixteenth-note pattern with accents and *sf* dynamics.

Musical staff for measure 227, marked with a '14' above the staff. It begins with a rest and then features a melodic line with dynamic markings of *P-no*.

21

Musical staff for measure 235, featuring a dynamic contrast from *pp* to *sf* and back to *pp* to *sf*. The staff includes a key signature change to one flat and a time signature change to 5/8.

Musical staff for measure 249, starting with a dynamic marking of *pp*. The staff contains a series of eighth notes with slurs, similar to the beginning of measure 19.

22

Allegro agitato

10

Musical staff for measure 259, marked with a '10' above the staff. The staff shows a series of rests in 6/8 time.

23

Musical staff for measure 23, starting with a piano (*p*) dynamic marking. The staff contains a half note G4, followed by quarter notes A4 and B4, and a half note C5.

24

Musical staff for measure 24, starting with a pianissimo (*pp*) dynamic marking. The staff contains a half note D5, followed by quarter notes E5 and F5, and a half note G5.

273

Musical staff for measure 273, featuring a six-measure rest indicated by a thick black bar and the number 6 above it.

25

Musical staff for measure 25, starting with a forte (*f*) dynamic marking. The staff contains a half note G4, followed by quarter notes A4 and B4, and a half note C5.

285

Musical staff for measure 285, starting with a forte (*f*) dynamic marking. The staff contains quarter notes G4, A4, and B4, followed by a half note C5. There are plus signs above the first three notes. The measure ends with a ritardando (*rit.*) marking.

26

Musical staff for measure 26, featuring a seven-measure rest (7) and a three-measure rest (3), both indicated by thick black bars. The measure concludes with an arpeggiated chord marked *mp* (mezzo-piano).

27

Andante ♩ = ♩ (♩ = 63)

Arpa

Musical staff for measure 27, marked *mp* (mezzo-piano). The staff contains a series of eighth notes: G4, A4, B4, C5, B4, A4, G4, with triplet markings (3) under the first, second, and fourth notes.

300

Musical staff for measure 300, starting with a sforzando (*sfp*) dynamic marking. The staff contains quarter notes G4, A4, and B4, followed by a half note C5. There are plus signs above the first three notes.

304

Musical staff for measure 304, starting with a sforzando (*sfp*) dynamic marking. The staff contains quarter notes G4, A4, and B4, followed by a half note C5. There are plus signs above the first three notes. The measure concludes with an acceleration (*accel.*) marking.

28

accel.

Musical staff for measure 28, starting with a sforzando (*sfp*) dynamic marking. The staff contains a half note G4, followed by quarter notes A4 and B4, and a half note C5. There are plus signs above the first three notes.

309

sfp *sfp* *sfp* *sfp*

313

sfp *sfp* *sfp* *sfp*

317

poco accel.

sfp *sfp* *sfp*

29

poco a poco accel. e cresc.

mf

324

accel. poco a poco

3 3 3 3 3 3

327

rit. **30** Agitato molto

mf

331

31

4 6 Fl.

3 3

32

p *mp* *f* *ff* *sff*

466

3

p *f*

472

43

p *f* *mf* *f*

477

3

sf

Presto

ff *ff*