

Acangelo Corelli

Concerto Grosso Op. 6, N° 8
Fatto per la notte di natale

Violoncello concertino

Concerto Grosso Op. 6, N° 8

Fatto per la notte di natale

Acangelo Corelli
(1653-1713)

Vivace

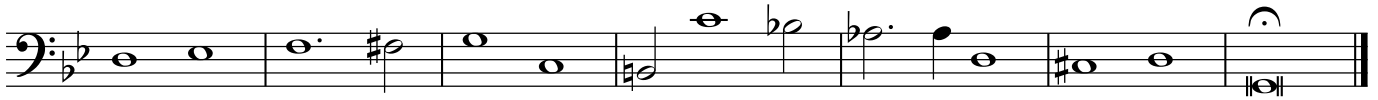


Grave

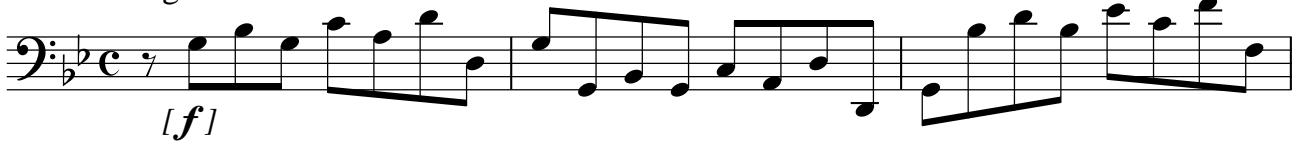
8 Arcate sostenute e come sta.



14



Allegro



4



8



Adagio



4



7



9

Allegro



13

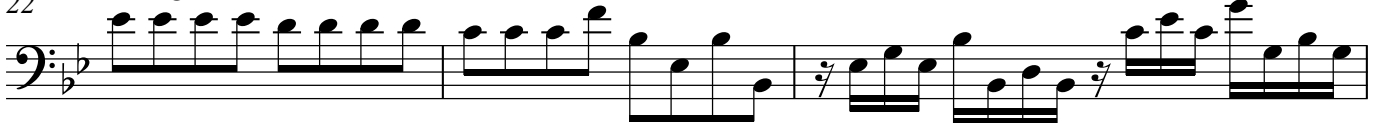


17



22

Adagio



25



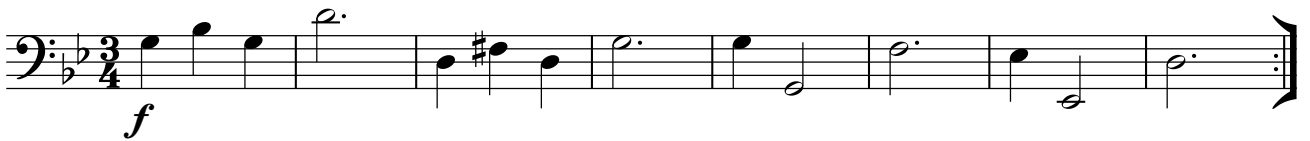
28



30



Vivace



9



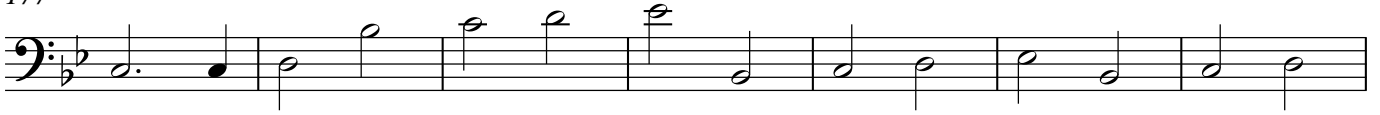
17



23



177



184



188



Pastorale ad libitum.

Largo



6



9



13



17



21



25

25

p *f* *p*

Measures 25-27: Bass clef, key signature of one sharp (F#). Measure 25 starts with a half rest, followed by a quarter note G2, a half note G2 with a fermata, and a quarter rest. Measure 26 begins with a quarter note G2, followed by eighth notes A2, B2, C3, D3, E3, F3, G3, and a quarter rest. Measure 27 features a quarter note G3, followed by eighth notes A3, B3, C4, D4, E4, F4, G4, and a quarter rest. Dynamic markings *p*, *f*, and *p* are placed below the first, second, and third measures respectively. Dashed lines indicate phrasing over the eighth-note runs in measures 26 and 27.

28

28

f

Measures 28-31: Bass clef, key signature of one sharp (F#). Measure 28 starts with a quarter note G2, followed by eighth notes A2, B2, C3, D3, E3, F3, G3, and a quarter rest. Measure 29 begins with a quarter note G3, followed by eighth notes A3, B3, C4, D4, E4, F4, G4, and a quarter rest. Measure 30 features a quarter note G4, followed by eighth notes A4, B4, C5, D5, E5, F5, G5, and a quarter rest. Measure 31 starts with a quarter note G5, followed by eighth notes A5, B5, C6, D6, E6, F6, G6, and a quarter rest. A dynamic marking *f* is placed below the second measure. Dashed lines indicate phrasing over the eighth-note runs in measures 28, 29, and 30.

32

32

Measures 32-35: Bass clef, key signature of one sharp (F#). Measure 32 starts with a quarter note G2, followed by eighth notes A2, B2, C3, D3, E3, F3, G3, and a quarter rest. Measure 33 begins with a quarter note G3, followed by eighth notes A3, B3, C4, D4, E4, F4, G4, and a quarter rest. Measure 34 features a quarter note G4, followed by eighth notes A4, B4, C5, D5, E5, F5, G5, and a quarter rest. Measure 35 starts with a quarter note G5, followed by eighth notes A5, B5, C6, D6, E6, F6, G6, and a quarter rest. Dashed lines indicate phrasing over the eighth-note runs in measures 32, 33, and 34.

36

36

[*p*]

Measures 36-40: Bass clef, key signature of one sharp (F#). Measure 36 starts with a quarter note G2, followed by eighth notes A2, B2, C3, D3, E3, F3, G3, and a quarter rest. Measure 37 begins with a quarter note G3, followed by eighth notes A3, B3, C4, D4, E4, F4, G4, and a quarter rest. Measure 38 features a quarter note G4, followed by eighth notes A4, B4, C5, D5, E5, F5, G5, and a quarter rest. Measure 39 starts with a quarter note G5, followed by eighth notes A5, B5, C6, D6, E6, F6, G6, and a quarter rest. Measure 40 begins with a quarter note G6, followed by eighth notes A6, B6, C7, D7, E7, F7, G7, and a quarter rest. A dynamic marking [*p*] is placed below the first measure. Dashed lines indicate phrasing over the eighth-note runs in measures 36, 37, 38, and 39.

41

41

Measures 41-44: Bass clef, key signature of one sharp (F#). Measure 41 starts with a quarter note G2, followed by eighth notes A2, B2, C3, D3, E3, F3, G3, and a quarter rest. Measure 42 begins with a quarter note G3, followed by eighth notes A3, B3, C4, D4, E4, F4, G4, and a quarter rest. Measure 43 features a quarter note G4, followed by eighth notes A4, B4, C5, D5, E5, F5, G5, and a quarter rest. Measure 44 starts with a quarter note G5, followed by eighth notes A5, B5, C6, D6, E6, F6, G6, and a quarter rest. Dashed lines indicate phrasing over the eighth-note runs in measures 41, 42, and 43.

45

45

Measures 45-47: Bass clef, key signature of one sharp (F#). Measure 45 starts with a quarter note G2, followed by eighth notes A2, B2, C3, D3, E3, F3, G3, and a quarter rest. Measure 46 begins with a quarter note G3, followed by eighth notes A3, B3, C4, D4, E4, F4, G4, and a quarter rest. Measure 47 features a quarter note G4, followed by eighth notes A4, B4, C5, D5, E5, F5, G5, and a quarter rest. Dashed lines indicate phrasing over the eighth-note runs in measures 45 and 46.

48

48

p *pp*

Measures 48-50: Bass clef, key signature of one sharp (F#). Measure 48 starts with a quarter note G2, followed by eighth notes A2, B2, C3, D3, E3, F3, G3, and a quarter rest. Measure 49 begins with a quarter note G3, followed by eighth notes A3, B3, C4, D4, E4, F4, G4, and a quarter rest. Measure 50 features a quarter note G4, followed by eighth notes A4, B4, C5, D5, E5, F5, G5, and a quarter rest. Dynamic markings *p* and *pp* are placed below the second and third measures respectively. Dashed lines indicate phrasing over the eighth-note runs in measures 48 and 49.

51

51

f

Measures 51-53: Bass clef, key signature of one sharp (F#). Measure 51 starts with a quarter note G2, followed by eighth notes A2, B2, C3, D3, E3, F3, G3, and a quarter rest. Measure 52 begins with a quarter note G3, followed by eighth notes A3, B3, C4, D4, E4, F4, G4, and a quarter rest. Measure 53 features a quarter note G4, followed by eighth notes A4, B4, C5, D5, E5, F5, G5, and a quarter rest. A dynamic marking *f* is placed below the second measure. Dashed lines indicate phrasing over the eighth-note runs in measures 51 and 52.

54

54

p *pp*

Measures 54-56: Bass clef, key signature of one sharp (F#). Measure 54 starts with a quarter note G2, followed by eighth notes A2, B2, C3, D3, E3, F3, G3, and a quarter rest. Measure 55 begins with a quarter note G3, followed by eighth notes A3, B3, C4, D4, E4, F4, G4, and a quarter rest. Measure 56 features a quarter note G4, followed by eighth notes A4, B4, C5, D5, E5, F5, G5, and a quarter rest. Dynamic markings *p* and *pp* are placed below the second and third measures respectively. Dashed lines indicate phrasing over the eighth-note runs in measures 54 and 55.