

# Per tenebras ad lucem (Tief Nacht zum Licht)

## Violino I

Andante moderato

2. viol.

G. Rauchecker

R.S.

The first section of the score consists of five staves of music. The notation is in treble clef with a key signature of one sharp (F#). It features a complex texture with multiple voices and chords, including many beamed sixteenth notes and slurs. The music is written in a fluid, handwritten style.

*Chor der Engel  
Lister's tempo.*

The second section of the score consists of five staves of music. It begins with a treble clef and a common time signature (C). The notation includes various dynamics such as *mf* and *pp*, and features a mix of melodic lines and chordal textures. The handwriting is consistent with the first section.

*Andante moderato*

The third section of the score consists of three staves of music. It begins with a treble clef and a 3/4 time signature. The tempo is marked *Andante moderato*. The notation is characterized by a steady, rhythmic pattern of chords and moving lines, typical of a chorale setting.



4

Andante moderato

Nº 2.

Handwritten musical score for 'Andante moderato'. The score consists of ten staves of music. The first staff begins with a treble clef, a key signature of three flats (B-flat, E-flat, A-flat), and a 3/4 time signature. The music features various rhythmic values, including eighth and sixteenth notes, and rests. A blue '5.' is written above the first staff. The second staff continues the melody with quarter and eighth notes. The third staff includes a blue '6.' and a blue 'Nº 3' with the word 'Grave.' written next to it. The fourth staff shows a change in tempo and dynamics, with a blue 'p' (piano) marking. The fifth and sixth staves continue the melodic line. The seventh and eighth staves show a more active rhythmic pattern. The ninth and tenth staves conclude the piece with a double bar line and a blue 'f' (forte) marking.

Nº 4

Adagio

all'aria

Handwritten musical score for 'Recitativo'. The score consists of four staves of music. The first staff begins with a treble clef, a key signature of three sharps (F-sharp, C-sharp, G-sharp), and a common time signature (C). The music is written in a recitativo style, featuring long, horizontal lines connecting the notes. A blue '4' is written above the first staff. The second and third staves continue this style with various note values and rests. The fourth staff concludes the piece with a double bar line and a blue 'f' (forte) marking.

*mus. allegro.*

**B**

**N:5** *Quett*

*Adagio*

*Chor.*

*Recit.*

**N:6** *Chor. allegro*

*r. y.*



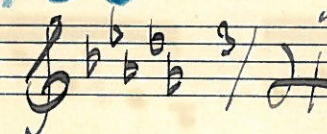
*Vivace.*

A

55

Nº 8

Andante-moderato

Noah und seine Löhne 

*Chor.*  
 mir denken Sie o Mutter, daß die sind noch bei - wohnt



Handwritten musical score for piano, measures 1-10. The score is in G major and 3/4 time. It features a melody in the right hand and a bass line in the left hand. Dynamics include *mf* and *con sordini*. There are some blue ink annotations, including a circled 'C' and 'No 9' written vertically on the left side.

**No 9**

*Recit.* *senza word Moderato pp*

Handwritten musical score for piano, measures 11-20. The score is in A major and 3/4 time. It features a melody in the right hand and a bass line in the left hand. Dynamics include *pp* and *f*. The tempo is marked *Moderato*.

**Chorus** *Allegro molto*

Handwritten musical score for piano, measures 21-25. The score is in A major and 3/4 time. It features a melody in the right hand and a bass line in the left hand. Dynamics include *f*. The tempo is marked *Allegro molto*.

Handwritten musical score for the first system, consisting of five staves. The first four staves contain melodic lines in treble clef with a key signature of one sharp (F#). The fifth staff contains a bass line with chords in treble clef. A blue '9' is written above the second staff.

Handwritten musical score for the second system, consisting of two staves. The first staff is a melodic line in treble clef with a key signature of one sharp. The second staff contains chords in treble clef. A blue '10' is written above the first staff, and the text "Recol. poco mosso." is written between the staves.

Handwritten musical score for the third system, consisting of two staves. Both staves contain chords in treble clef. The key signature changes to two flats (Bb, Eb).

Handwritten musical score for the fourth system, consisting of one staff. The text "Schlusser" is written in blue ink above the staff. The staff contains a melodic line in treble clef with a key signature of two flats. A blue '11' is written above the staff.

Handwritten musical score for the fifth system, consisting of two staves. The first staff is a melodic line in treble clef with a key signature of two flats. The second staff contains chords in treble clef with a key signature of two flats. A blue '12' is written above the second staff.

Handwritten musical score for voice and piano. The score consists of ten staves. The first staff has a treble clef and a key signature of one flat. The music includes various notes, rests, and dynamic markings such as 'p' (piano) and 'mf' (mezzo-forte). There are also some blue ink annotations, including a large '2' and some scribbles. The piece concludes with a double bar line and a fermata.

Ende des. Theiles.

Three sets of empty musical staves, each consisting of five lines, provided for additional notation or practice.

No. 12

2<sup>tes</sup> Teil

*Sostenuto*

*sempre dimi*

Choral

Handwritten musical notation on five staves. The notation includes various note values (quarter, eighth, and sixteenth notes) and rests. The music is written in a single system across five staves.

**№ 13**

*Recitativo*

*in tempo molto*

Handwritten musical notation for the 'Recitativo' section. It begins with a common time signature (C) and a fermata. The notation includes a key signature change to three sharps (F#, C#, G#) and dynamic markings such as *mp* and *mf*. The section concludes with a double bar line.

*piu mosso quasi Allegro*

Handwritten musical notation for the 'piu mosso quasi Allegro' section. It features a key signature change to three sharps (F#, C#, G#) and dynamic markings such as *mf* and *mp*. The notation includes various note values and rests.

*Andante tranquillo*

*con sordini*

Handwritten musical notation for the 'Andante tranquillo' section. It features a key signature change to three sharps (F#, C#, G#) and dynamic markings such as *pp*. The notation includes various note values and rests. The section concludes with a double bar line.

**B**

**G**

36

**No. 14** Solo Quartett.  
pizz. Harfe

**No. 15** Moderato.

Recitativo

Andante Moderato.

Andante

Zwischenspiel

Andante ass. modto.

Chor der Engel

senza sordini

*Alla poco più mosso*

*dir.:* *rit.:* *rit.:*

*fu-ur - tri - fan!* *mathoneso* *Chor*

*Accomp. mod.*

*dir.*

Handwritten musical score for No. 16, consisting of five staves of music in G major and 3/4 time. The notation includes various rhythmic values, accidentals, and dynamic markings.

*G.*

**No. 16**

*Choral*

**No. 17**

*Recitativo* *in tempo moderato*

*in tempo*



*Allegro moderato*

Chor

*F. G.*

This page contains a handwritten musical score consisting of 11 staves. The notation is written in black ink on aged, yellowed paper. The score begins with a treble clef and a key signature of two flats (B-flat and E-flat). A blue flourish is present at the beginning of the first staff. The music features a variety of note values, including quarter, eighth, and sixteenth notes, as well as rests and chords. Dynamic markings such as *dim.* and *dimmi* are used throughout. The notation includes many accidentals (sharps and flats) and some complex rhythmic patterns, particularly in the later staves. The handwriting is fluid and characteristic of a composer's sketch.

Andante.

Recitativo *fp*

quasi Mayis Bar. solo. *R*  
 10 min. Natur

*L*  
 Pauline  
 des plus d'innocence

quasi Beate Primus.  
 21.

21. pul.  
*No 19*

Zwischenspiel Adagio Soliquartett. Adagio

*Fin*  
*arco*  
 76.3.

*fin* *arco*

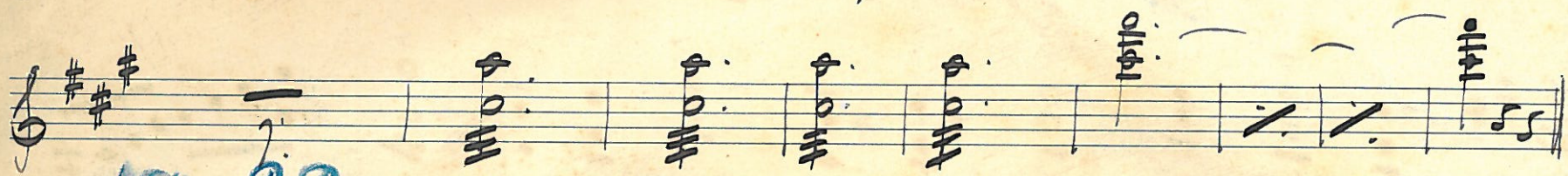
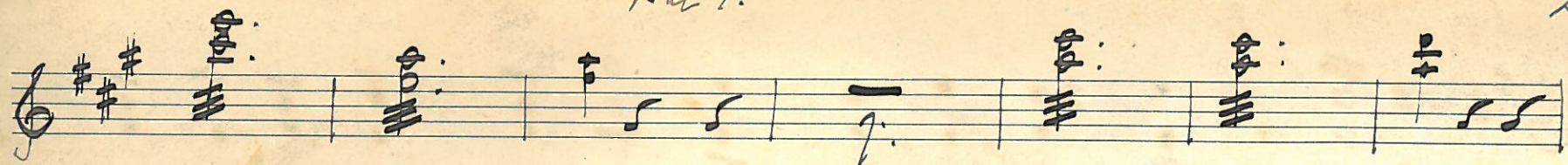
*No 20*

Choral

*No 21*

*Recit. in tempo Moderato*

Engelchor. *arco*

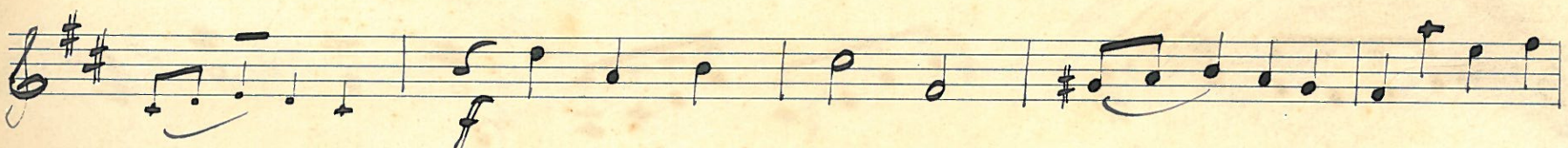
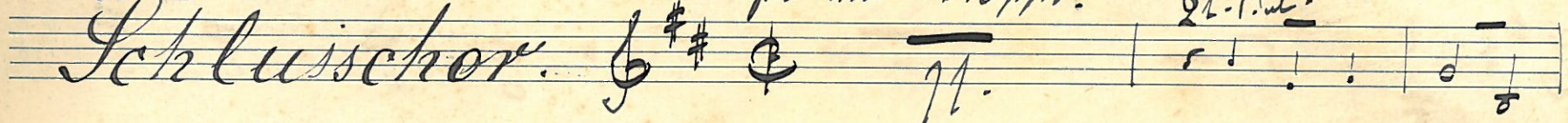


No 22

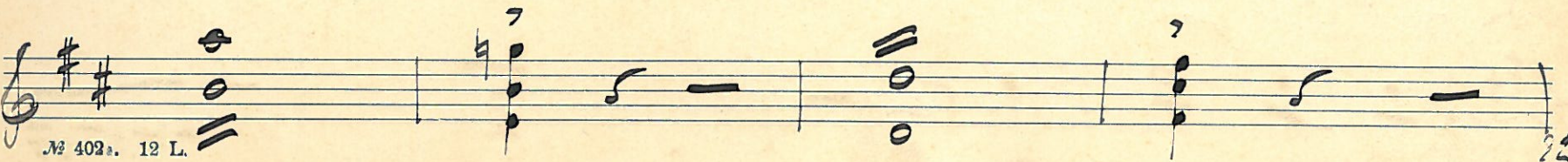
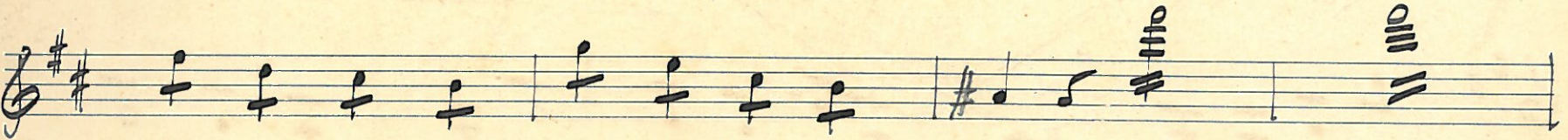
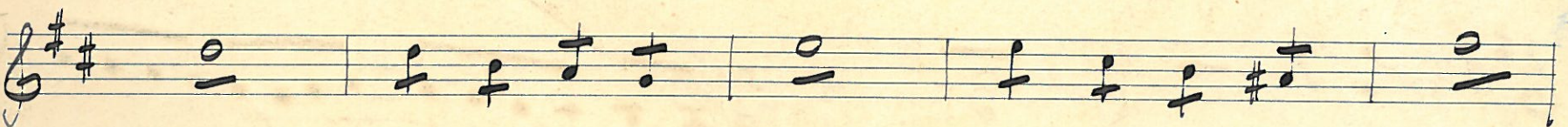
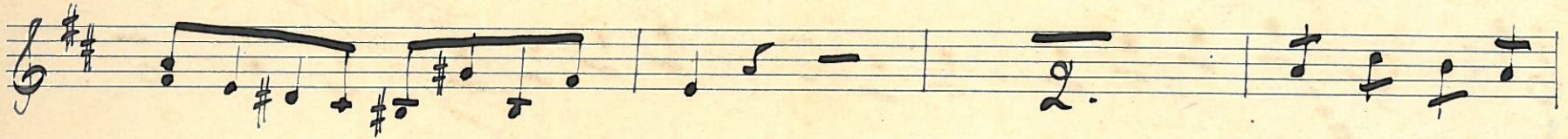
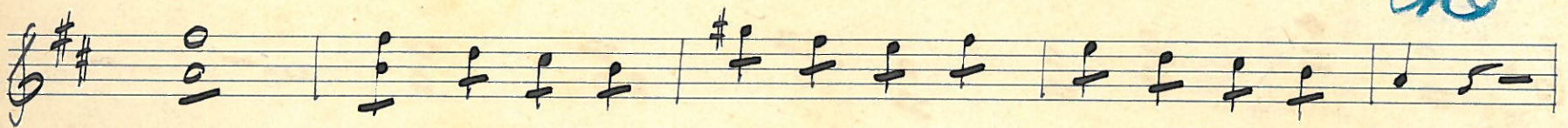
Schluschor.

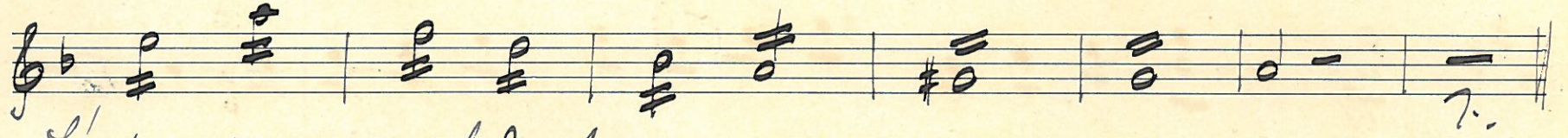
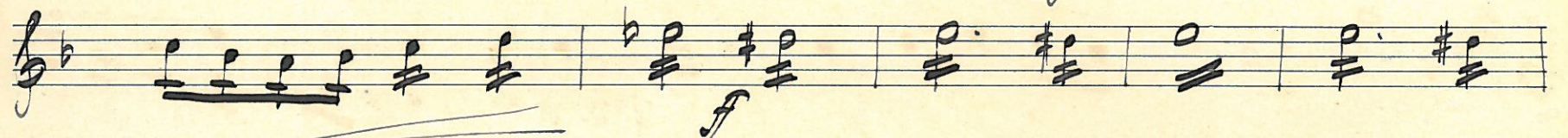
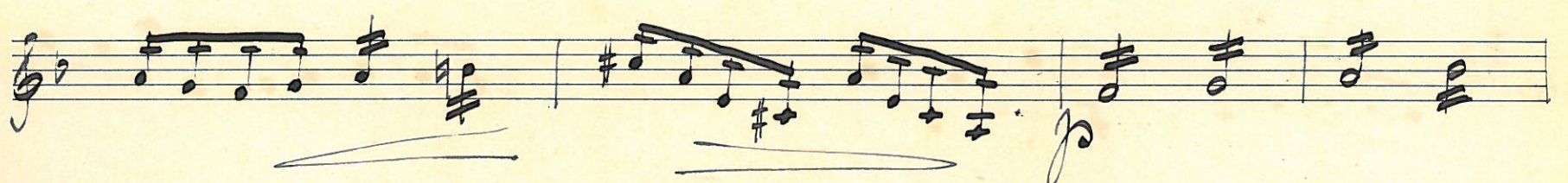
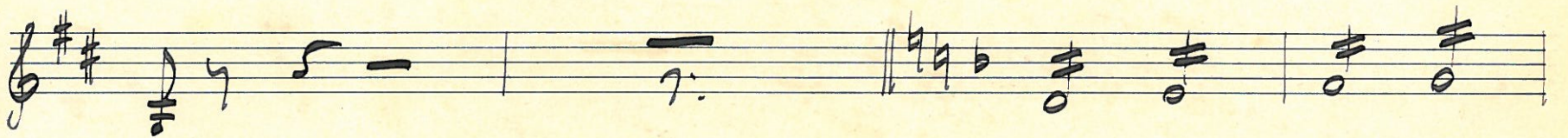
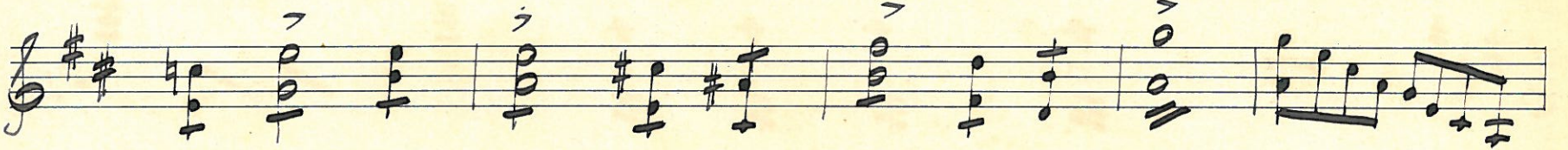
Allegro non troppo.

24. Takt.

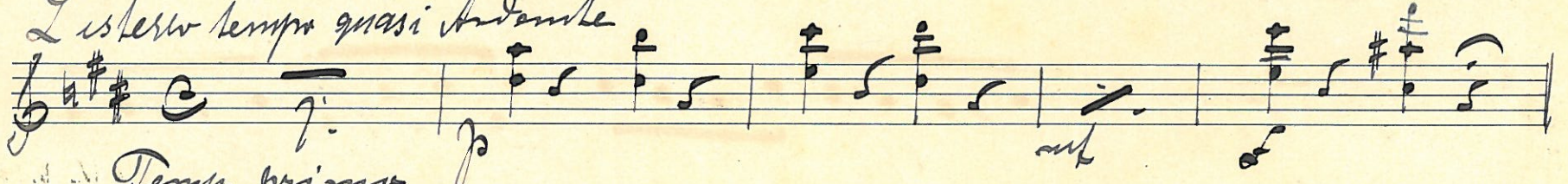


16

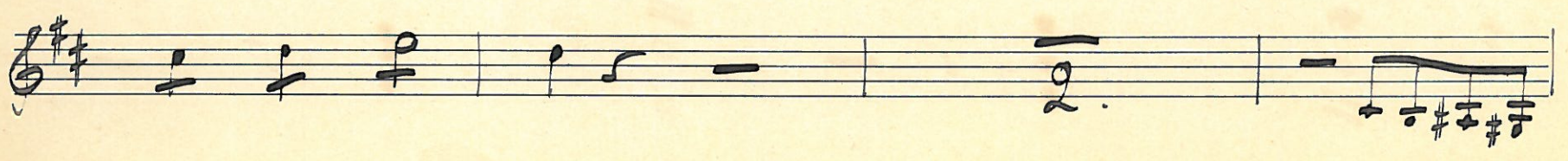
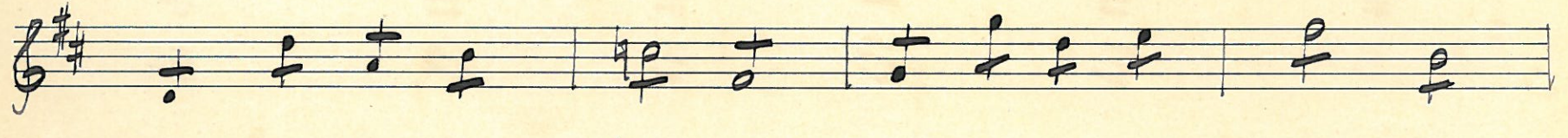
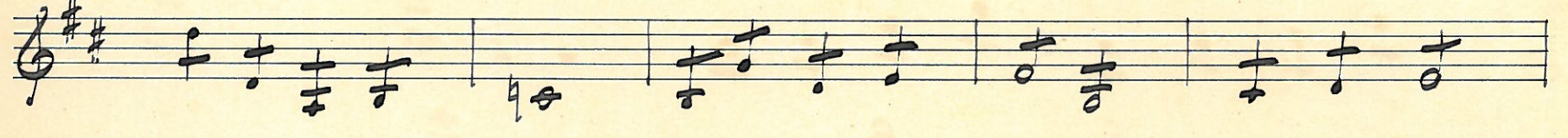
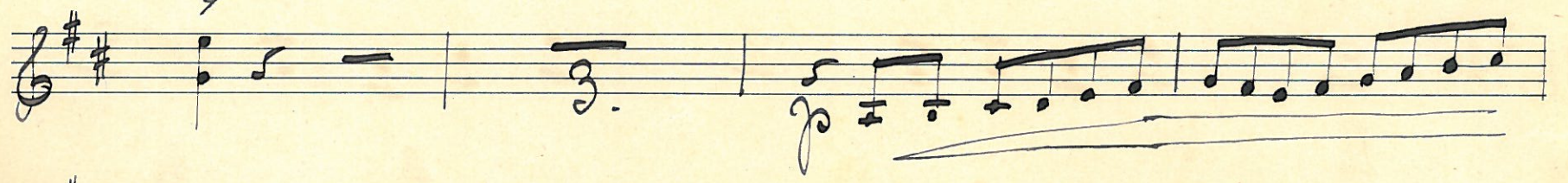
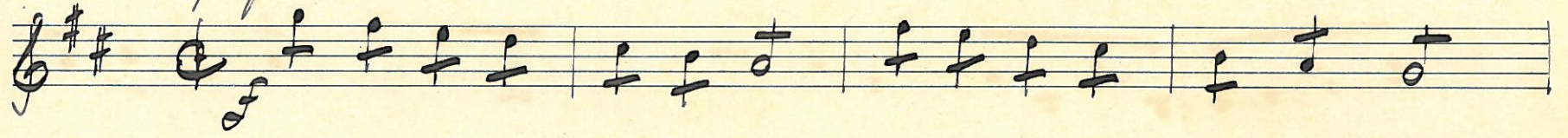




*L'istesso tempo quasi Andante*



*Tempo primo*



Handwritten musical score on seven staves. The music is in G major (one sharp) and 2/4 time. It features a melody in the upper staves and a bass line in the lower staves. Dynamics include *mp* and *f*. The piece concludes with a double bar line and the word "Fine" written in cursive.

Five empty musical staves for notation.