

6.

A. 25

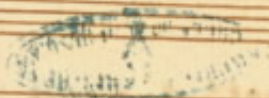
133 142

Hasse

33-1-17 20

Canata

A Voce Solo



Sciarlotta Miserabile

(Flauto)

Handwritten musical notation for the flute part, including treble clef, key signature of one sharp (F#), and 12/8 time signature. The notation consists of a single staff with various rhythmic values and accidentals.

Handwritten musical notation for the vocal part, including treble clef, key signature of one sharp (F#), and 12/8 time signature. The lyrics "Sciarlotta mise-" are written below the notes.

Handwritten musical notation for the vocal part, including treble clef, key signature of one sharp (F#), and 12/8 time signature. The lyrics "ra-bile per me non star giustizia mi af-" are written below the notes.

Empty musical staves at the bottom of the page.

Handwritten musical notation on a single staff, featuring a treble clef, a key signature of one sharp (F#), and a 2/4 time signature. The notes are mostly quarter and eighth notes with stems pointing downwards.

Handwritten musical notation on a single staff, featuring a bass clef, a key signature of one sharp (F#), and a 2/4 time signature. The notes are mostly quarter and eighth notes with stems pointing upwards.

fogano le lagrime addio meinscioz pietà ad-

Handwritten musical notation on a single staff, featuring a treble clef, a key signature of one sharp (F#), and a 2/4 time signature. The notes are mostly quarter and eighth notes with stems pointing downwards.

Handwritten musical notation on a single staff, featuring a bass clef, a key signature of one sharp (F#), and a 2/4 time signature. The notes are mostly quarter and eighth notes with stems pointing upwards.

dio meinscioz pietà pietà meinscioz pietà pietà meinscioz addio

Handwritten musical notation on a single staff, featuring a treble clef, a key signature of one sharp (F#), and a 2/4 time signature. The notes are mostly quarter and eighth notes with stems pointing downwards. The system ends with a double bar line.

Handwritten musical notation on a single staff, featuring a bass clef, a key signature of one sharp (F#), and a 2/4 time signature. The notes are mostly quarter and eighth notes with stems pointing upwards. The system ends with a double bar line.

pietà addio meinscioz pietà

Handwritten musical notation on a single staff, featuring a bass clef, a key signature of one sharp (F#), and a 2/4 time signature. The notes are mostly quarter and eighth notes with stems pointing upwards.

Two empty musical staves at the bottom of the page, one with a treble clef and one with a bass clef.

Sciarlotta misera —

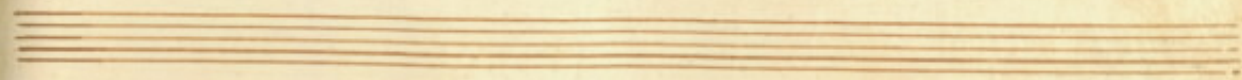
me non star giustizia mi affo- gano le la-

me me insioz addio addio addio mein-

scioz pietà me inscioz pietà me inscioz pietà

me inscioz pietà pietà pietà me in-

sioz pietà vā via vā via nichs pietà nichs nichs pietà





Musical staff with notes and a fermata at the end.

sciarlot- ta mo- ri- rà à à

Musical staff with notes and a time signature change to 12/8.

sciarlotta mori- rà al fin al fin me la farà me la farà

Musical staff with notes and a time signature change to 12/8.

Dal segno

Finis

Handwritten text in the left margin, possibly a list of names or titles, written vertically.

33-1-17 00