

Claude Debussy Printemps

1^{er} et 2^e TROMBONES

I. *TACET*

II

Modéré
Piano

21 4 **22** 3 *a Tempo* **23** *Con moto* **24** 4

25 *Più moto et molto string.*
vons *All^o non tanto* **26** 2 6 2

Animato **27** 8 *Poco a poco più animato* *Ancora più animato*

All^o appas.
TROMB.

Bon Cors **28** *f*

Cors TROMB. **29** *f*

Con moto *Molto appas.*

Debussy — Printemps

2

1^{er} et 2^e TROMBONES

30 Scherzando tempo mod^{to} **31** Moins vite et très rythme **32**

f. *f.* *f.* 6 8 8

33 **34** Un poco più vivo **35**

8 7 Fl. Fl.

TROMB.

36

f p legg. *cres.* *cen* *do* *f sost.* *p* *dim. pp*

37 And^{no} **38** **39** **40** Tromp.

4 8 8 10 6 Tromp.

41 Accel. poco a poco

Fl. vons Fl.

vons velle TROMB.

p 1 *p* 1

Debussy — Printemps

1^{er} et 2^e TROMBONES

3

42 *All^o ma ben mod^{to}*

mf *cresc. molto* *f* *sec* *f* *sfz*

Detailed description: This system shows the piano accompaniment for measures 42 through 45. The music is in a key with one sharp (F#) and a 3/4 time signature. Measure 42 starts with a mezzo-forte (*mf*) dynamic and a *cresc. molto* (crescendo molto) marking. Measure 43 begins with a forte (*f*) dynamic and a *sec* (second ending) marking. Measure 44 continues with *f* and measure 45 with *sfz* (sforzando). The piano part features a steady eighth-note accompaniment in the right hand and a more active bass line in the left hand.

Très rythmé

43 **44** **45**

mf dim. *p* 12 8 2

Detailed description: This system continues the piano accompaniment for measures 43, 44, and 45. The tempo is marked *Très rythmé*. Measure 43 features a *mf dim.* (mezzo-forte decrescendo) marking. Measure 44 has a piano (*p*) dynamic. Measures 44 and 45 contain rests for the piano accompaniment, with the number of measures indicated as 12, 8, and 2 respectively. The music returns to the piano accompaniment in measure 45.

Tromp.

vons

Detailed description: This system shows the Trombone (Tromp.) part for measures 43, 44, and 45. The music is in a key with one sharp (F#) and a 3/4 time signature. The part features a melodic line with triplets and slurs. The word "vons" is written above the staff in measure 44. The music ends with a repeat sign in measure 45.

46 *All^o molto*
TROMB.

f à plein son *più f*

Detailed description: This system shows the Trombone (TROMB.) part for measure 46. The tempo is marked *All^o molto*. The music is in a key with one sharp (F#) and a 3/4 time signature. The part features a melodic line with slurs and accents. The dynamic is marked *f à plein son* (forte to full sound) and *più f* (even stronger). The music ends with a repeat sign.

47

f marc.

Detailed description: This system shows the Trombone part for measure 47. The music is in a key with one sharp (F#) and a 3/4 time signature. The part features a melodic line with slurs and accents. The dynamic is marked *f marc.* (forte marcato). The music ends with a repeat sign.

a Tempo vivo

sfz 2 *mf* *f* *ff*

Detailed description: This system shows the Trombone part for measures 47 through 50. The tempo is marked *a Tempo vivo*. The music is in a key with one sharp (F#) and a 3/4 time signature. The part features a melodic line with slurs and accents. The dynamics are marked *sfz* (sforzando), *mf* (mezzo-forte), *f* (forte), and *ff* (fortissimo). The music ends with a repeat sign.

Debussy — Printemps

Claude Debussy

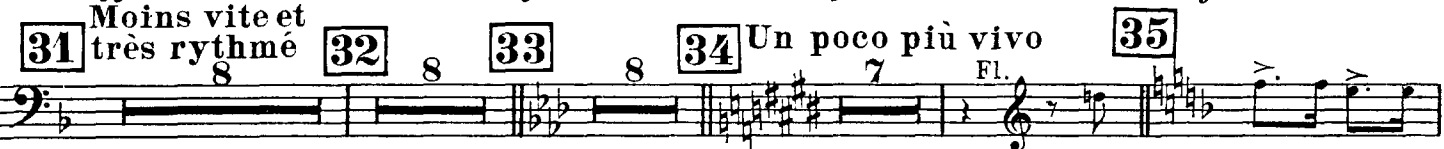
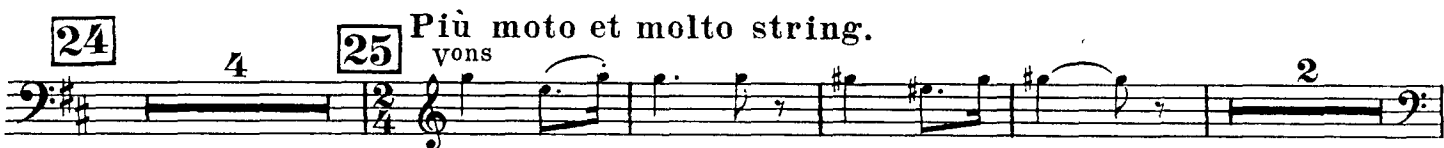
Printemps

3^e TROMBONE

I. TACET

II

Modéré
Piano



Debussy — Printemps

3^e TROMBONE

3

1^{er} et 2^e Tromb.

Musical staff for 1^{er} et 2^e Trombones, bass clef, key signature of one flat. The staff contains a melodic line with various dynamics and articulations.

36 3^e TROMB.

Musical staff for 3^e Trombone, bass clef, key signature of one flat. It features a long melodic line with dynamics *f sost.*, *p*, and *dim. pp*. A section of four measures is marked with a box containing the number 4, and a section of eight measures is marked with a box containing the number 8. The tempo marking **Andantino** is present.

38 8 **39** 10 **40** 6 Tromp.

Musical staff for Trombone, bass clef, key signature of one flat. It contains several measures of music, some marked with boxes containing numbers 8, 10, and 6. The tempo marking **Andantino** is present.

41 Fl. **Accel poco a poco**

Musical staff for Flute, bass clef, key signature of one flat. It contains a melodic line with lyrics: "von velle von velle". The tempo marking **Accel poco a poco** is present.

TROMB.

Musical staff for Trombone, bass clef, key signature of one flat. It contains a melodic line with dynamics *p*, *p*, *mf*, and *cresc. molto*. A section of one measure is marked with a box containing the number 1, and another section of one measure is marked with a box containing the number 1. The tempo marking **Andantino** is present.

All^o ma ben mod^{to}

Musical staff for Trombone, bass clef, key signature of one flat. It contains a melodic line with dynamics *f* and *f*. The tempo marking **All^o ma ben mod^{to}** is present.

Très rythmé

Musical staff for Trombone, bass clef, key signature of one flat. It contains a melodic line with dynamics *mf* and *dim. p*. A section of 12 measures is marked with a box containing the number 12, a section of 8 measures with a box containing the number 8, and a section of 2 measures with a box containing the number 2. The tempo marking **Très rythmé** is present.

46 TROMB.
à plein son

Musical staff for Trombone, bass clef, key signature of one flat. It contains a melodic line with dynamics *f* and *rit^o f*. The tempo marking **Très rythmé** is present.

47

Musical staff for Trombone, bass clef, key signature of one flat. It contains a melodic line with dynamics *f marcato*. The tempo marking **Très rythmé** is present.

a Tempo vivo

Musical staff for Trombone, bass clef, key signature of one flat. It contains a melodic line with dynamics *sfz*, *mf*, *f*, and *ff*. A section of 2 measures is marked with a box containing the number 2, and a section of 3 measures with a box containing the number 3. The tempo marking **a Tempo vivo** is present.