

Scherzo No. II.
14. Fach 20. Lage

Violino conc. Oboi Viola e
Basso, Partitura sola.
Del Sig. Steinichen.



Musica	
2398	
0	7

(8 Bl.)

16

A

Die Benutzung der Ha

Datum	Name des Benutzers	Bemerkung überbe
	<i>Herr A. Moser,</i>	
	<i>mit</i>	



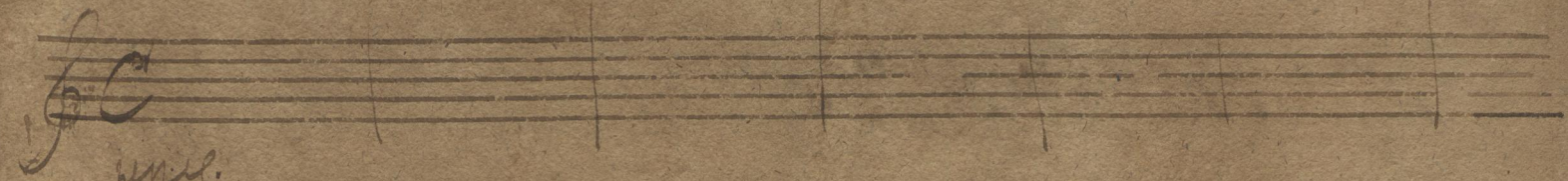
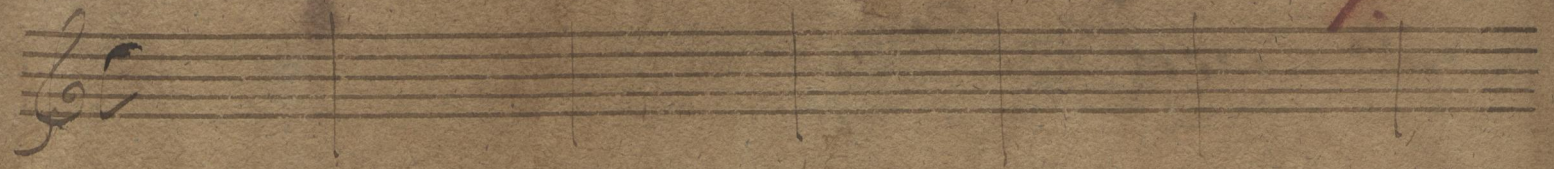
Die R

atum Na

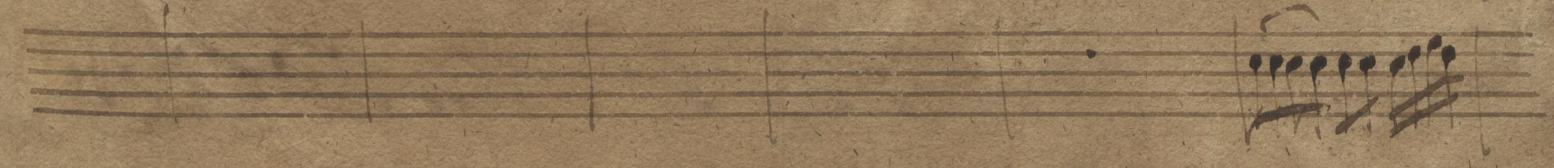
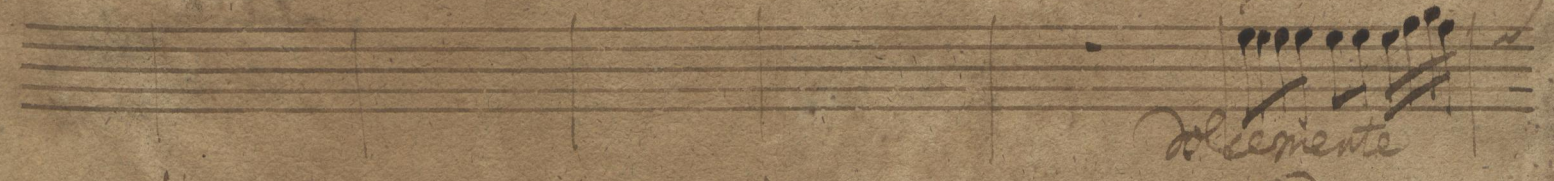
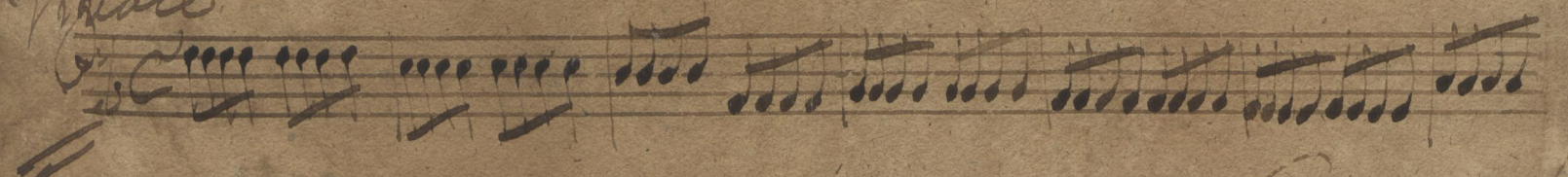
Concerto con Cornida Caccia del Sr. Geminio

Vivace

7



Vivace

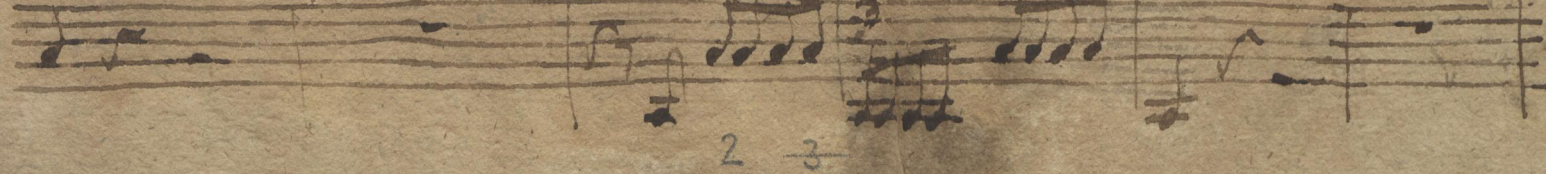
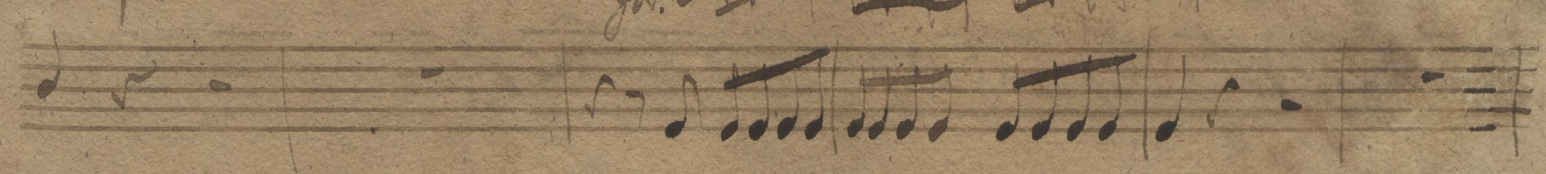
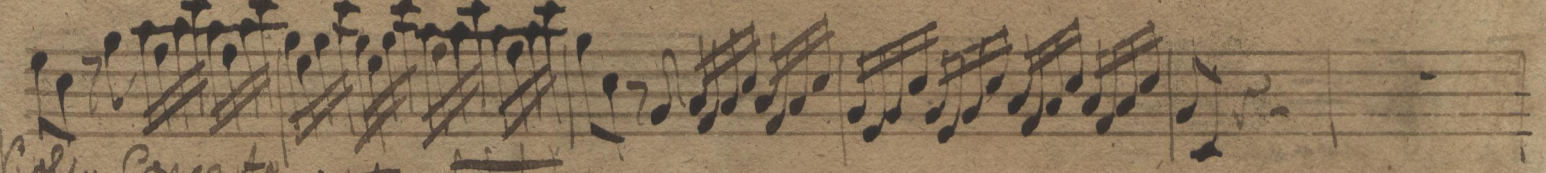
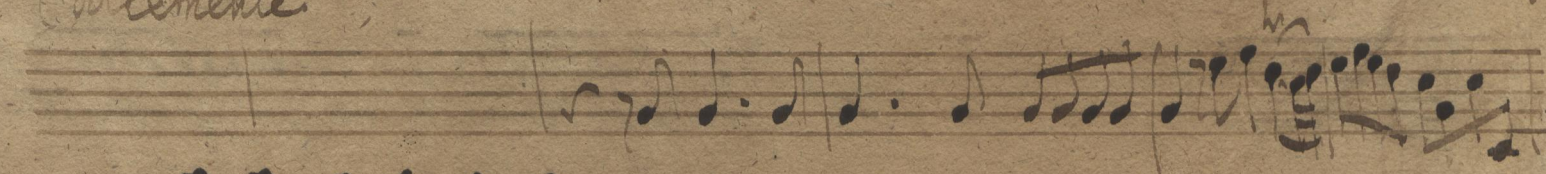
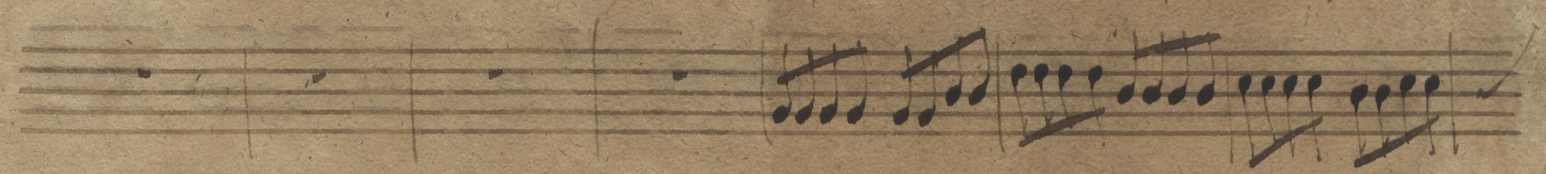
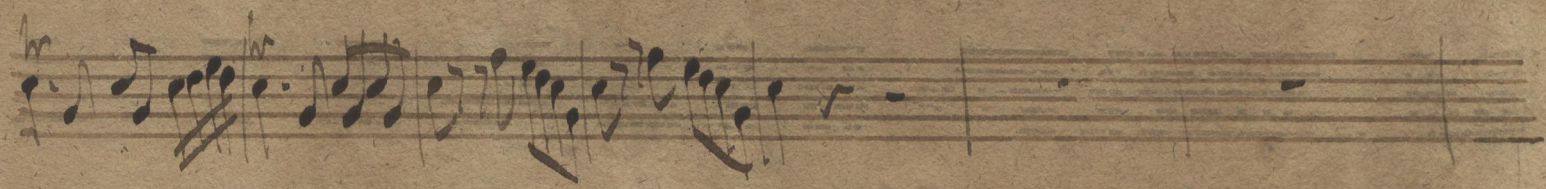
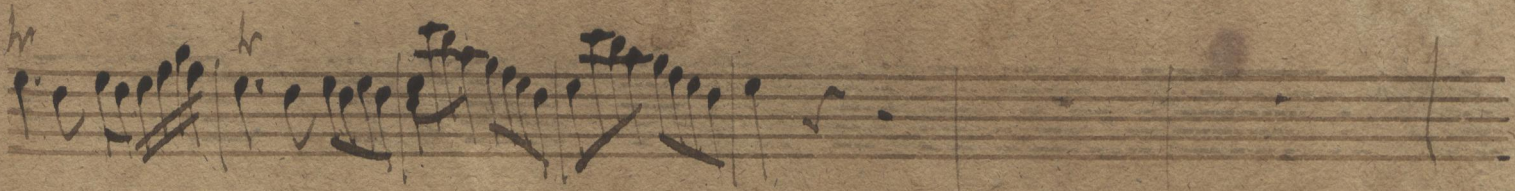


(4488) (1-8)



Mus. 2398-0-7

1 2



Ad cimento

Violin Concerto

pian.

for.

Handwritten musical notation on two staves, featuring complex rhythmic patterns and slurs.

Mens.

Handwritten musical notation on five staves, with dynamic markings *pian* and *pia.*

Viol. Con:

Handwritten musical notation for Violin Concerto on five staves, with dynamic markings *pian.* and *pian*.

Handwritten musical score on aged paper, consisting of five systems of staves. The first system includes a treble clef and a common time signature. The notation is dense, featuring many sixteenth and thirty-second notes, with some slurs and dynamic markings. The paper shows signs of age, including foxing and staining.

Handwritten musical score on aged paper, consisting of five systems of staves. The notation continues with similar density to the first section. A double bar line is present at the start of the second system. The word "tutti" is written above the fourth staff, and "univ: tutti" is written below the fourth staff. The paper shows signs of age, including foxing and staining.

Corn. (no)

Corn. no

unis

A handwritten musical score on aged paper, featuring two staves for horns and four staves for woodwinds. The top two staves are labeled 'Corn. (no)' and 'Corn. no'. The woodwind section includes parts for flutes, oboes, and bassoons, with a 'pian' marking. The notation is dense with sixteenth and thirty-second notes, and rests. The paper shows signs of age, including foxing and staining.

Handwritten musical notation on two staves, featuring treble clefs and various rhythmic values. The notation includes some triplets and slurs.

Handwritten musical notation on two staves. The second staff begins with the dynamic marking *pian. for.*

Handwritten musical notation on two staves. The second staff begins with the dynamic marking *pia. fort.*

Handwritten musical notation on two staves, continuing the piece with various rhythmic patterns.

Two empty musical staves, likely representing a section where the music is not written or a placeholder.

Handwritten musical notation on four staves, featuring a dense and complex passage with many sixteenth and thirty-second notes. The notation includes various slurs and articulation marks.

Handwritten musical notation on a single staff, featuring a treble clef and a 2/4 time signature. The music consists of a series of eighth and sixteenth notes.

Handwritten musical notation on a single staff, featuring a bass clef and a 2/4 time signature. The music consists of a series of eighth and sixteenth notes. The initials "H.H." are written to the left of the staff.

Handwritten musical notation on a single staff, featuring a treble clef. The music consists of quarter notes and rests. The word "Andolac" is written above the staff.

Handwritten musical notation on a single staff, featuring a treble clef. The music consists of quarter notes and rests.

Handwritten musical notation on a single staff, featuring a treble clef. The music consists of quarter notes and rests.

Handwritten musical notation on a single staff, featuring a bass clef. The music consists of quarter notes and rests. The number "3" is written above the staff.

Handwritten musical notation on a single staff, featuring a treble clef. The music consists of eighth notes and rests. The text "Fainto trall. solo unisoni." is written below the staff.

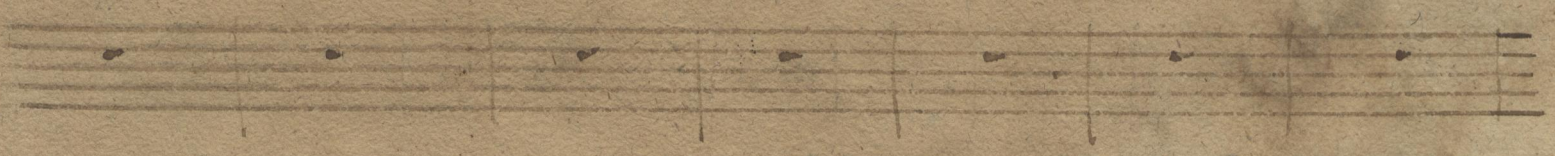
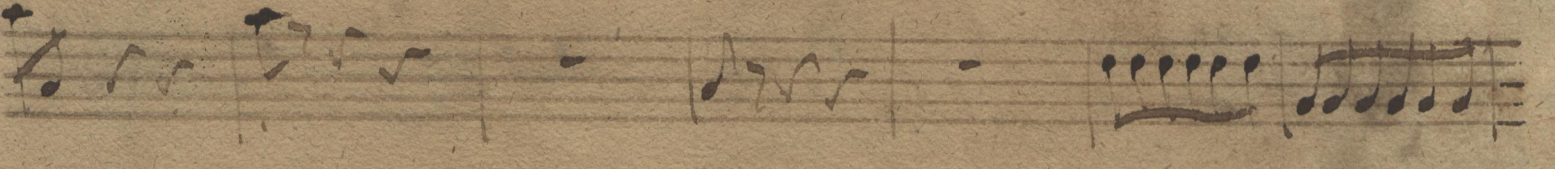
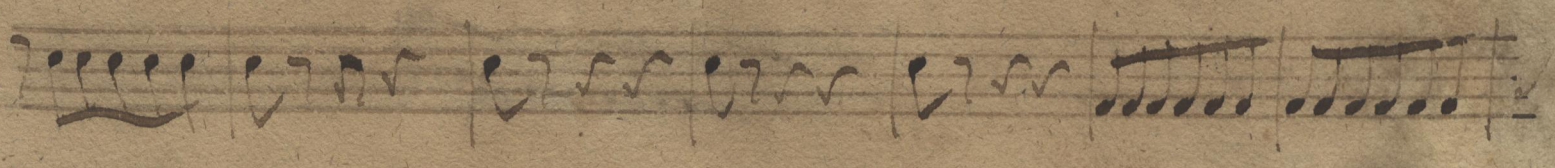
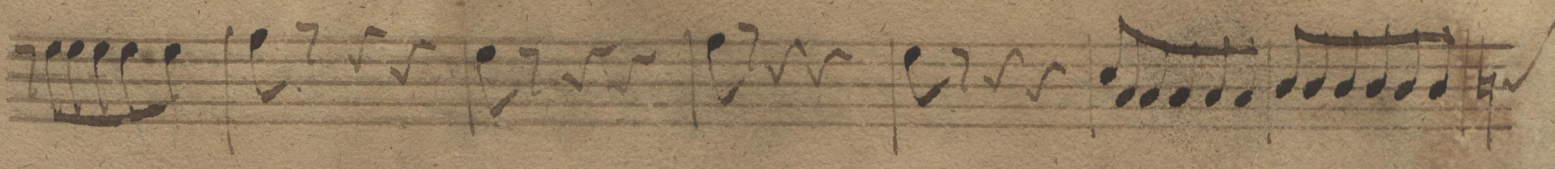
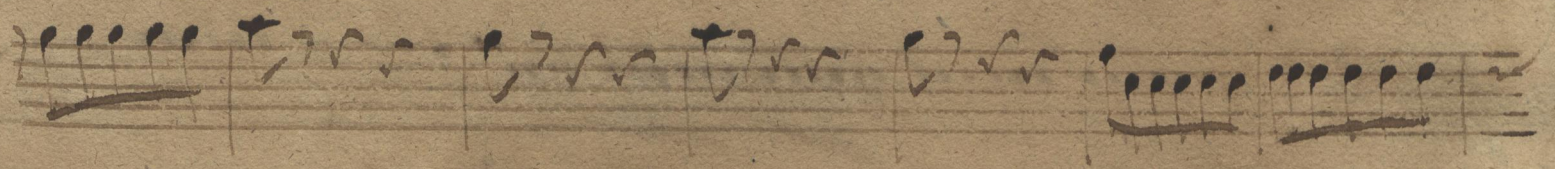
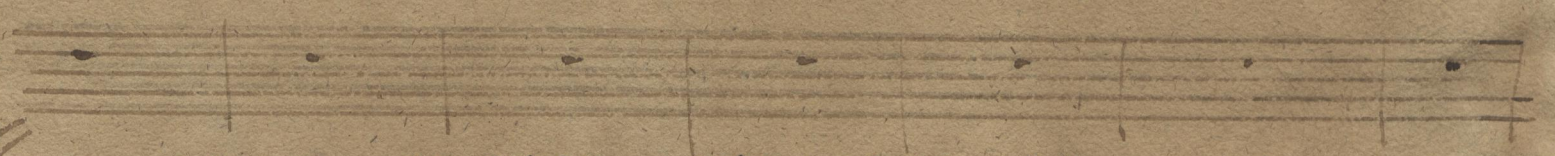
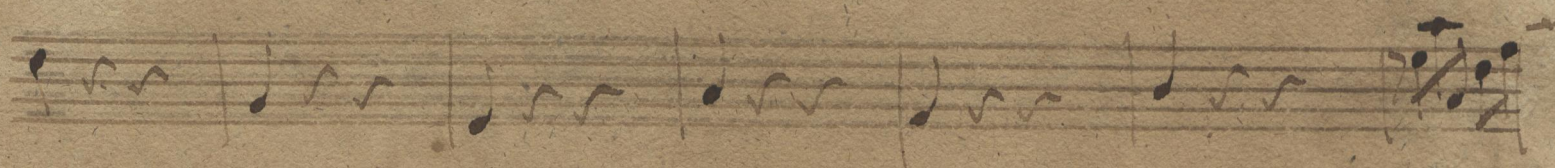
Handwritten musical notation on a single staff, featuring a treble clef. The music consists of sixteenth notes and rests. The text "Hautb. 1mo" is written to the left of the staff.

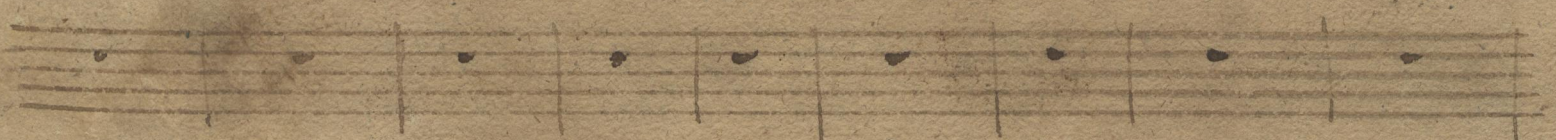
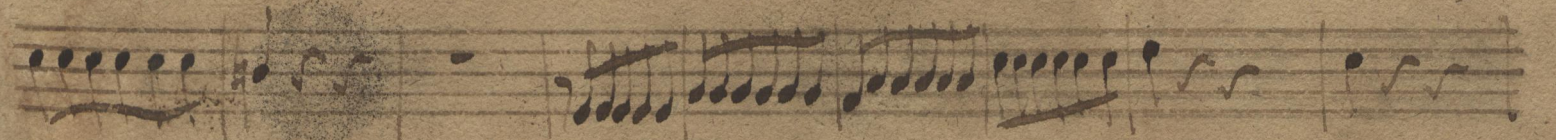
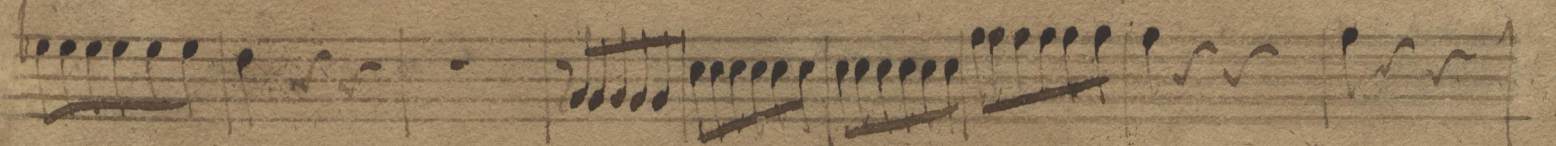
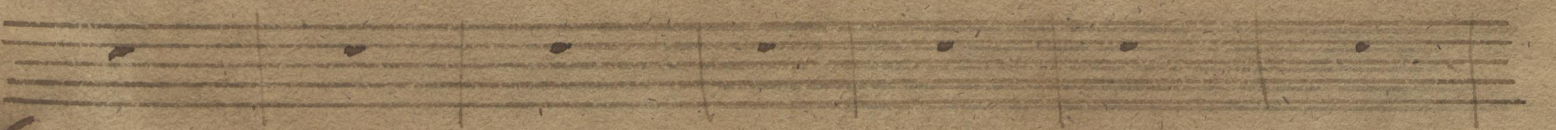
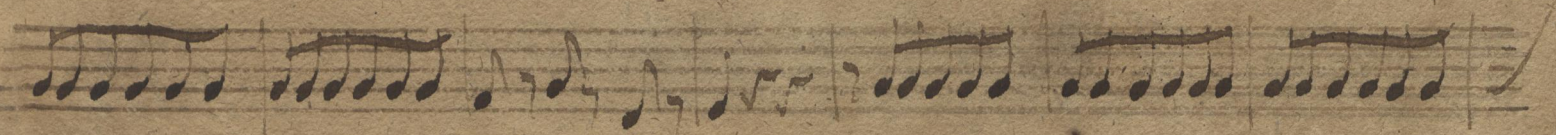
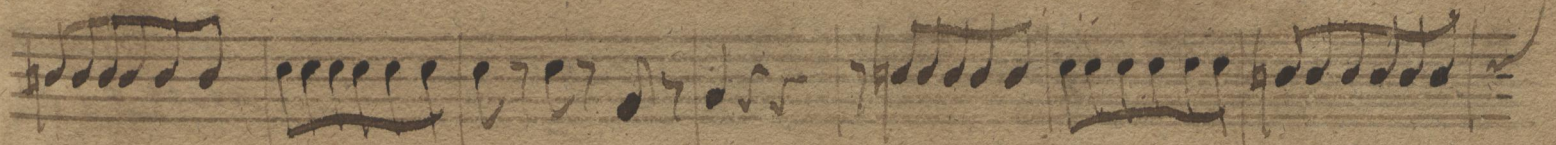
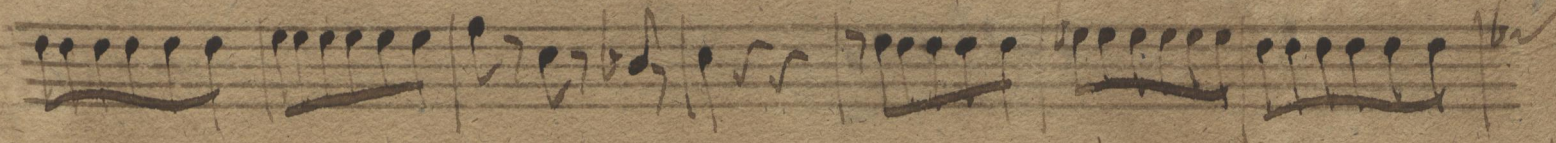
Handwritten musical notation on a single staff, featuring a treble clef. The music consists of sixteenth notes and rests. The text "Hautb. 2do" is written to the left of the staff.

Handwritten musical notation on a single staff, featuring a treble clef. The music consists of sixteenth notes and rests. The text "Hautb. 3do" is written to the left of the staff.

Handwritten musical notation on a single staff, featuring a treble clef. The music consists of quarter notes and rests. The text "Violine e Viollette pizzicati dolcemente" is written below the staff.

Handwritten musical notation on a single staff, featuring a treble clef. The music consists of quarter notes and rests. The text "un poco allegro" is written below the staff.





Handwritten musical notation on five staves. The first staff features a complex, dense melodic line with many sixteenth notes. The subsequent four staves contain more rhythmic and melodic patterns, including some rests and longer note values.

A single staff of handwritten musical notation, mostly consisting of rests and a few scattered notes.

Handwritten musical notation on a single staff, featuring a very dense and intricate melodic line with many sixteenth notes.

Handwritten musical notation on a single staff, showing a rhythmic pattern with many sixteenth notes.

Handwritten musical notation on a single staff, showing a rhythmic pattern with many sixteenth notes.

Handwritten musical notation on a single staff, showing a rhythmic pattern with many sixteenth notes.

Handwritten musical notation on a single staff, showing a rhythmic pattern with many sixteenth notes.

A single staff of handwritten musical notation, mostly consisting of rests and a few scattered notes.

Handwritten musical notation on a single staff, featuring a treble clef, a key signature of one sharp (F#), and a common time signature (C). The notation includes various rhythmic values such as eighth and sixteenth notes, along with rests.

Handwritten musical notation on a single staff, featuring a treble clef and a common time signature (C). The notation consists of dense sixteenth-note passages.

Handwritten musical notation on a single staff, featuring a treble clef and a common time signature (C). The notation consists of dense sixteenth-note passages.

Handwritten musical notation on a single staff, featuring a treble clef and a common time signature (C). The notation consists of dense sixteenth-note passages.

Handwritten musical notation on a single staff, featuring a treble clef and a common time signature (C). The notation includes various rhythmic values such as eighth and sixteenth notes, along with rests.

Handwritten musical notation on a single staff, featuring a treble clef and a common time signature (C). The notation consists of whole and half notes with rests.

Handwritten musical notation on a single staff, featuring a treble clef, a key signature of one sharp (F#), and a common time signature (C). The notation includes various rhythmic values such as eighth and sixteenth notes, along with rests.

Handwritten musical notation on a single staff, featuring a treble clef and a common time signature (C). The notation consists of dense sixteenth-note passages.

Handwritten musical notation on a single staff, featuring a treble clef and a common time signature (C). The notation consists of dense sixteenth-note passages.

Handwritten musical notation on a single staff, featuring a treble clef and a common time signature (C). The notation consists of dense sixteenth-note passages.

Handwritten musical notation on a single staff, featuring a treble clef and a common time signature (C). The notation includes various rhythmic values such as eighth and sixteenth notes, along with rests.

Handwritten musical notation on a single staff, featuring a treble clef and a common time signature (C). The notation includes various rhythmic values such as eighth and sixteenth notes, along with rests. The word *pian.* is written below the staff.

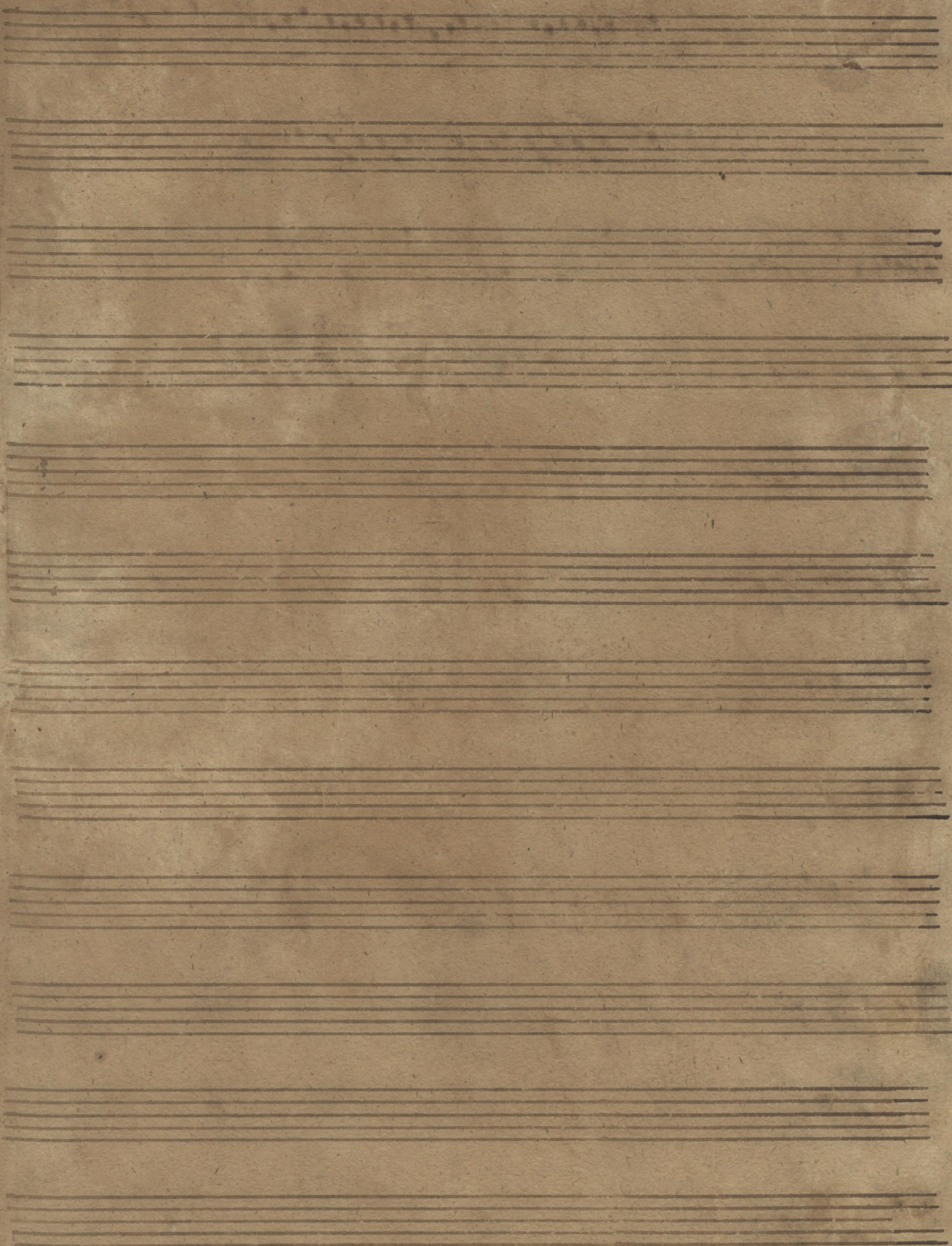
Handwritten musical notation on a single staff, featuring a treble clef and a common time signature (C). The notation includes various rhythmic values such as eighth and sixteenth notes, along with rests. The word *pian.* is written below the staff.

This image shows a page of handwritten musical notation on aged, yellowed paper. The score is written in dark ink and consists of several staves. At the top left, there are two staves with treble clefs and a common time signature (C). Below these, the word "uniso" is written in cursive. The main body of the score features a complex melodic line with many sixteenth and thirty-second notes, interspersed with rests. The word "allegro" is written in cursive below the first staff of this section. The notation includes various rhythmic values, accidentals, and dynamic markings. The paper shows signs of age, including some staining and wear at the edges.

A page of handwritten musical notation on aged, yellowed paper. The page contains ten staves of music, written in a historical style. The notation includes various note values, stems, and clefs. The first two staves have a '77' written at the end. The paper shows signs of wear, including a tear on the right edge and some staining.

A handwritten musical score on aged, yellowed paper. The score consists of 14 staves of music, arranged in two columns of seven. The notation is in a historical style, featuring a treble clef on the first staff of each column. The music is written in a single system across the two columns. The notation includes various note values, rests, and bar lines. The paper shows signs of age, including foxing and some staining.

A handwritten musical score on aged, yellowed paper. The score consists of ten staves of music. The notation includes various note values, rests, and dynamic markings. The first staff begins with a treble clef and a key signature of one flat. The music is written in a cursive, handwritten style. The word "piano" is written below the third staff, and "la fine" is written above the seventh staff. The paper shows signs of wear, including a tear on the right edge and some discoloration.



314

47

This image shows a page of handwritten musical notation on aged, yellowed paper. The notation is arranged in ten horizontal staves, each containing several lines of music. The notes are small and dark, with stems and beams connecting them. The paper shows signs of wear, including creases and discoloration. A ruler is visible on the right edge of the page, indicating the scale of the document.

