

Sinfonia No. 2

Viola

Joseph Haydn

I. Allegro

The musical score for the Viola part of Sinfonia No. 2 by Joseph Haydn, I. Allegro, is presented in ten staves. The key signature is one flat (B-flat) and the time signature is common time (C). The score begins with a dynamic marking of *f* (forte) and continues with various rhythmic patterns and dynamics. A dynamic marking of *p* (piano) appears at measure 19, and another *f* marking appears at measure 26. The score concludes with a first ending bracket at measure 61, marked with a '1'.

66-73

f

74-80

f

81-87

p

88-93

pp

94-100

f

101-107

f

108-113

pp

114-119

pp

120-125

pp

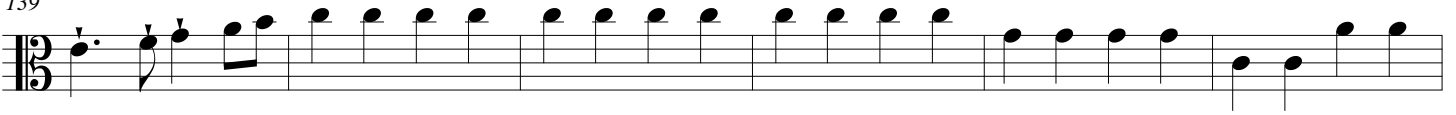
126-131

pp

132-138

f

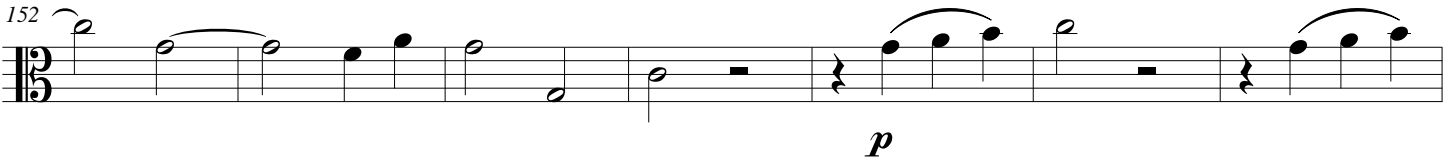
139



145



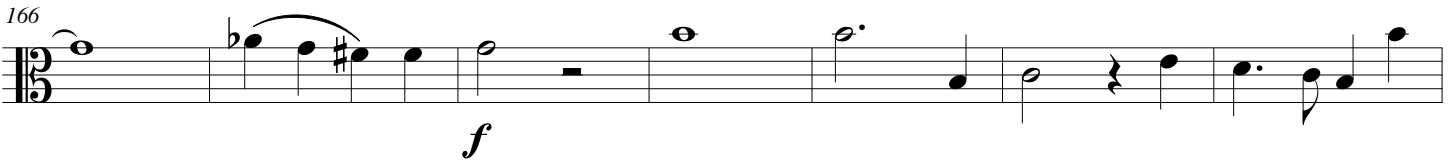
152



159



166



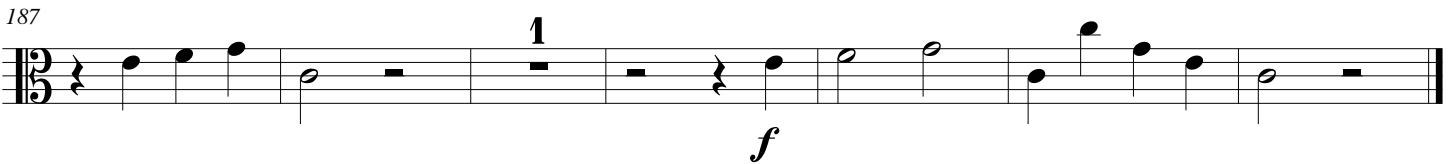
173



180



187



4
II. Andante

Sinfonia No. 2

sempre piano

10

19

28

38

47

55

65

73

III. Presto

f

12

p

24

3

37

f

49

5

65

2 3

79

3

92

f

104

p

128 *f*

139 *pp*

151

162 *f*

173

185

197 *p*

210

222 *f*