

Concerto per archi e Basso Continuo

RV 120

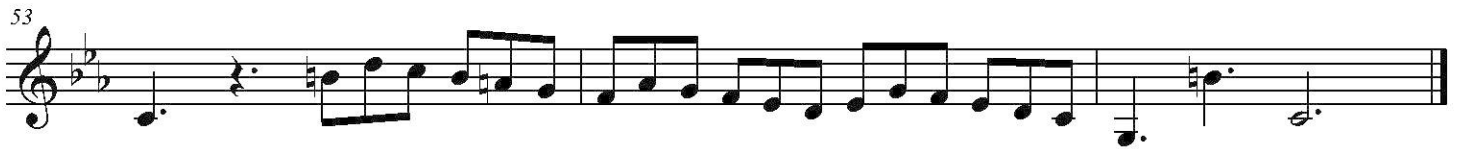
I. Allegro non molto

Violino II

Antonio Vivaldi (1678 - 1741)

The image displays a musical score for the Violino II part of the first movement of Vivaldi's Concerto per archi e Basso Continuo, RV 120. The score is written in treble clef, with a key signature of two flats (B-flat and E-flat) and a time signature of 12/8. The tempo is marked 'I. Allegro non molto'. The score consists of ten staves of music, with measure numbers 4, 7, 11, 15, 18, 21, 25, 30, and 35 indicated at the beginning of their respective staves. The music features a rhythmic pattern of eighth and sixteenth notes, often grouped in pairs or fours, with various phrasing and articulation marks such as slurs and accents.

RV 120



II. Largo



III. Allegro

3

8

12

16

22

26

31

37

41

46

50

55

p *f*

p *f*