

Concerto per Liuto FaWV L:d1

Viola

J. F. Fasch (1688-1758)

[1. Allegro]

8 *tr* *f*

16 *p* *f*

24 *p* *f*

33 *p*

42

51 *p*

64 *f*

73 *p* *f*

82 *f*

90 *p* *f* *p*

Viola

2

99

109

118

130

143

155

166

178

188

197

207

218

227

f *p* *f* *p*

f

p

f

f

p

f

f

p

f

f

p

[2.] Andante



6



12



18



26



34



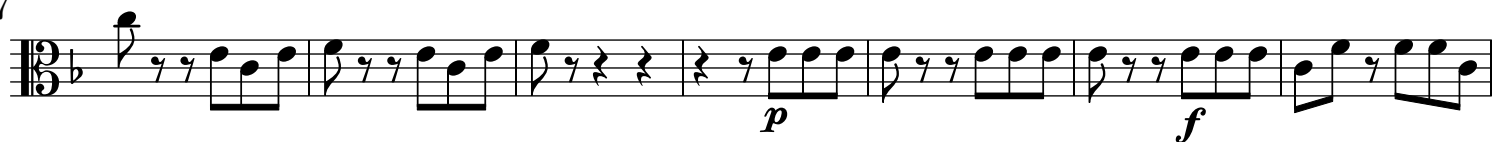
44



51



57



64



72



78



Viola

[3.] Un poco allegro

4

10

21

32

43

54

63

71

82

93

104

119

130

p

f

p *pp*

f *pp*

p

f

senza sordini

p