

Cello

Viola Concerto No. 1

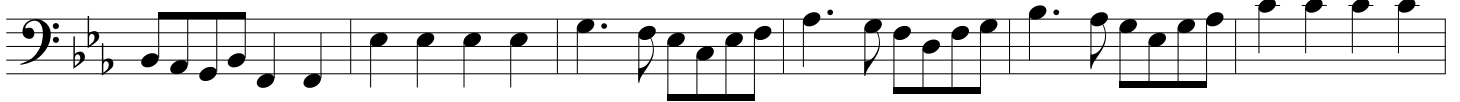
I. En Perpetuum, Bellum

Jordan Holloway

Appassionato ♩=150



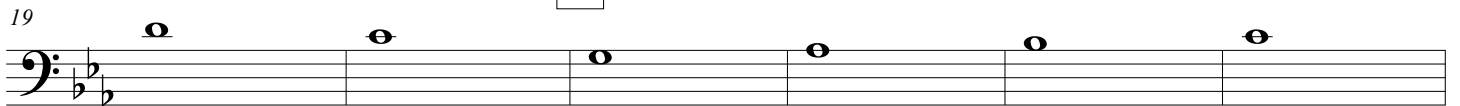
7



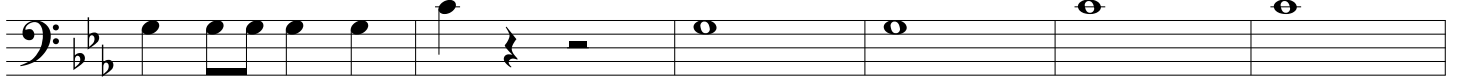
A



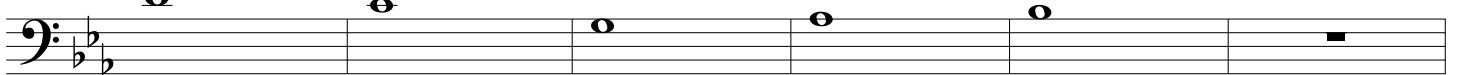
B



25



31

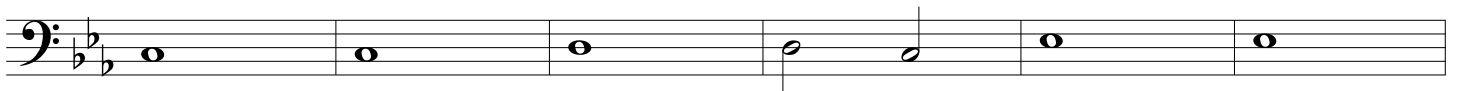


C

Lamentoso ♩=67 **4**

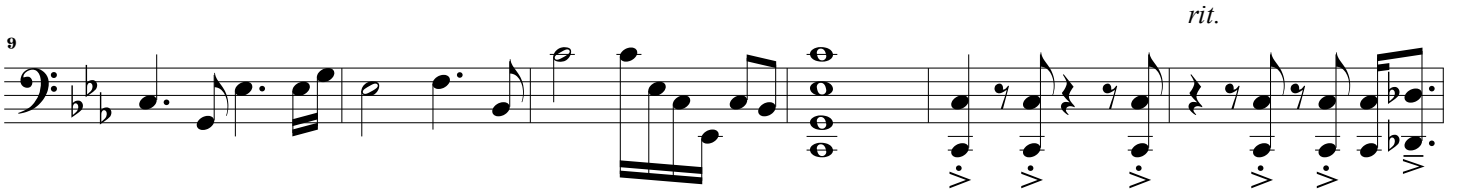
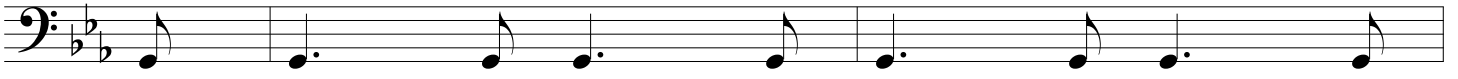


46



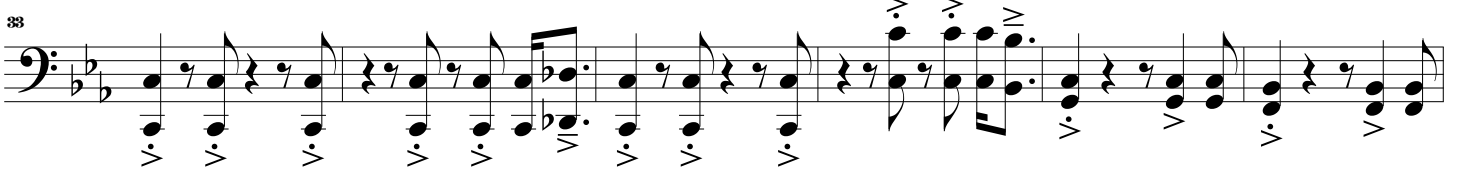
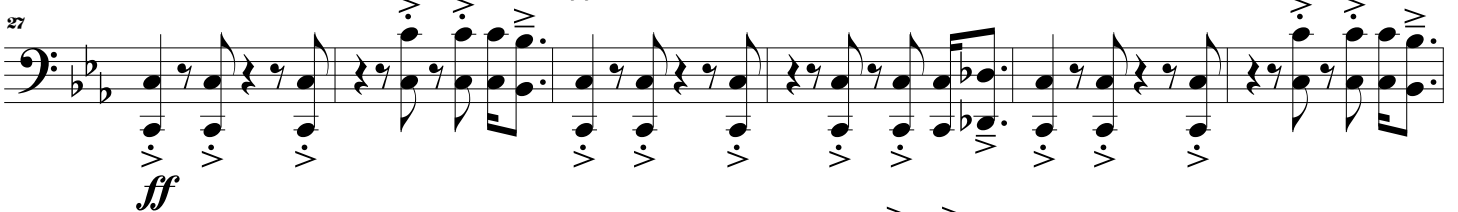
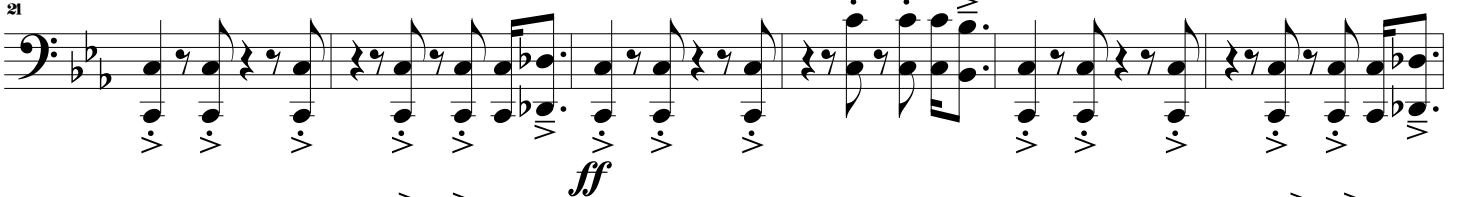
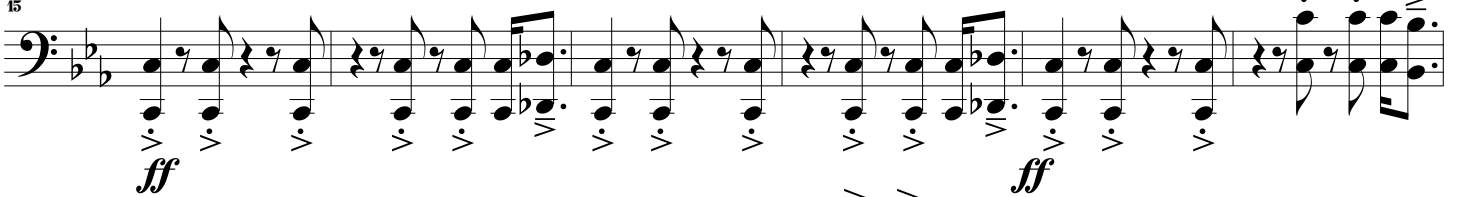
Viola Concerto No. 1
II. Orpheus' Passing

Lamentoso $\text{♩} = 70$



Vivace $\text{♩} = 130$

ff



Viola Concerto No. 1

51 *ff*

57 *Lamentoso* ♩=70

63

69 *rit.* *Vivace* ♩=130 *ff*

75 *ff*

81 *ff*

87