

Schieferdeckern
Bassus
Antimo.
L.

Saml. Engelhart Nr. 19

1. Concert.

1. Ouvertur.

Bassus Continuo.

Passepied.

Entrée.

Concert

Musical notation for the 'Entrée' section, consisting of four staves of music in 2/4 time. The notation includes various note values, rests, and dynamic markings such as asterisks and a 'w' at the end of the first staff.

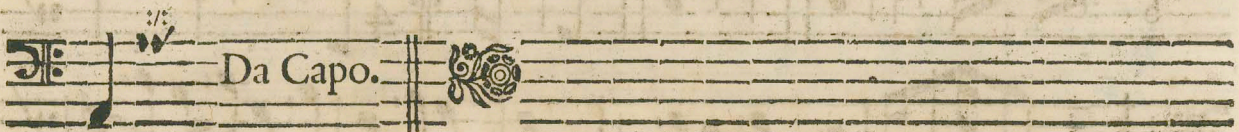
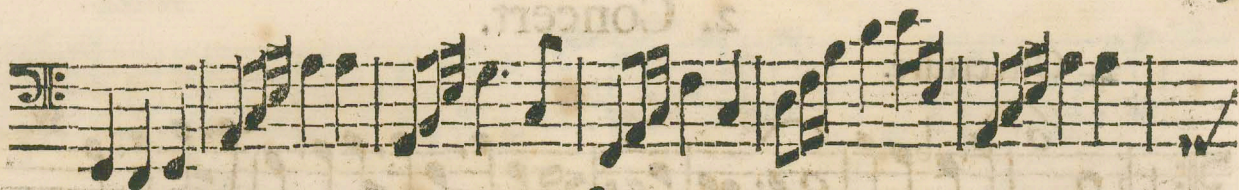
Chaconne.

Musical notation for the 'Chaconne' section, consisting of four staves of music in 3/4 time. The notation includes various note values, rests, and dynamic markings such as asterisks and a 'w' at the end of the first staff.

Finis.

Musical notation for the final section of the piece, consisting of four staves of music. The notation includes various note values, rests, and dynamic markings such as 'adagio' and 'Piano'.

2 Concert.



Giquée.

