

KARL DITTERS VON DITTERSDORF

Sinfonische Konzertante

Symphony concertante

für Kontrabaß und Bratsche

for Double-bass and Viola

mit Begleitung v. Streichorchester, 2 Oboen u. 2 Hörnern

with accompaniment of string orchestra, 2 Oboes and 2 Horns

Zum ersten Male herausgegeben v. Prof. Dr. Wilhelm Altmann

Edited for the first time by Prof. Dr. Wilhelm Altmann

Horn I in D

I. Allegro

Horn I in D

3

II. Andantino tacet

III. Menuetto

Musical score for Horn I in D, Menuetto section. The score is written in treble clef with a key signature of one sharp (F#). It consists of three staves. The first staff begins with a treble clef and a key signature of one sharp. The second staff begins with a treble clef and a key signature of one sharp. The third staff begins with a treble clef and a key signature of one sharp. The score includes measures 1 through 50, with a double bar line at measure 25. The tempo is marked 'Menuetto D.C.'.

IV. Allegro ma non troppo

Musical score for Horn I in D, Allegro ma non troppo section. The score is written in treble clef with a key signature of one sharp (F#). It consists of ten staves. The score includes measures 1 through 120, with a double bar line at measure 60. The tempo is marked 'Allegro ma non troppo'. The score includes various markings such as 'Solo', 'Tutti', 'ff', and 'p'.

Symphony Concertante

Horn in D 1

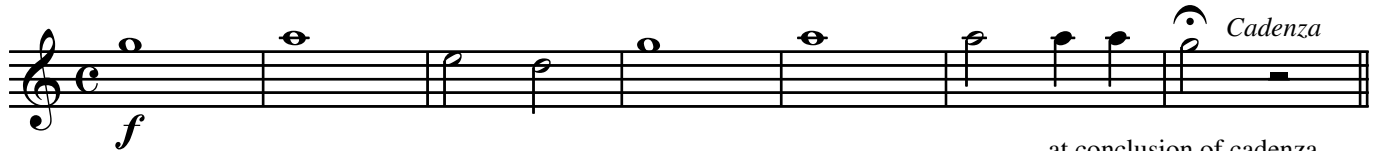
Mvt. I insert

Dittersdorf

Instructions:

After measure 110 of your published part, play this insert.

At the conclusion of the cadenza, play from
measure 111 to the end as printed in your part.



at conclusion of cadenza,
play from measure 111 to end
as printed in part