

Flusma 16481 Canon a 3 Violini con Basso e. di Joh. Tachetzel.

8

10

Violino 1

Violino 2

Violino 3

Cembalo

Staatsbibliothek  
Preussischer Kulturbesitz  
Berlin



Handwritten musical score system 1, consisting of three staves. The top two staves contain a melodic line with various rhythmic values and accidentals. The bottom staff contains a bass line with a similar rhythmic pattern. The notation is dense and characteristic of 18th-century manuscript notation.

Handwritten musical score system 2, consisting of three staves. The notation continues from the first system, showing a continuation of the melodic and bass lines with various rhythmic patterns and accidentals.

Handwritten musical score system 3, consisting of three staves. The notation continues from the second system, showing a continuation of the melodic and bass lines with various rhythmic patterns and accidentals.

Handwritten musical score system 4, consisting of three staves. The notation continues from the third system, showing a continuation of the melodic and bass lines with various rhythmic patterns and accidentals.



Handwritten musical score for three staves. The top staff uses a treble clef, and the bottom staff uses a bass clef. The key signature is one sharp (F#), and the time signature is 6/8. The notation includes various note values and rests.

Handwritten musical score for three staves, continuing the piece. It maintains the treble and bass clefs and the 6/8 time signature.

*Violini* <sup>Gigue</sup>  $\frac{6}{8}$

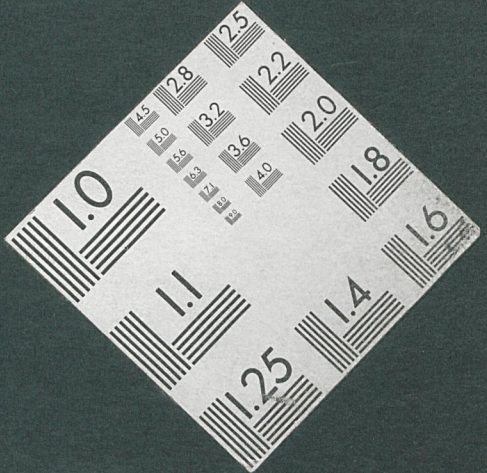
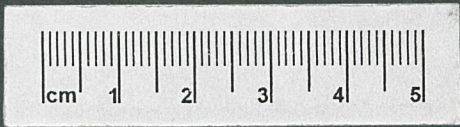
Handwritten musical score for a full ensemble. The parts are labeled: Violini I, Violini II, Violini III, Cembalo, and a basso continuo line. The score includes various musical notations and figured bass symbols.

Figured bass symbols:  $6$ ,  $6_5$ ,  $4$ ,  $6_7$ ,  $\#$ ,  $6_4$ ,  $\#$ ,  $6_4$ ,  $\#$ ,  $4\#$ ,  $3$ ,  $6_4$ ,  $3$ ,  $6$ .



Handwritten musical score on aged paper, featuring a system of staves with musical notation. The notation includes notes, rests, and clefs, with some markings such as  $\frac{2}{4}$  and  $\frac{3}{4}$  visible. The score is organized into systems, with the first system containing multiple staves. The paper shows signs of age, including discoloration and wear.





**Staatsbibliothek  
zu Berlin**  
Preußischer Kulturbesitz

