

MARCH and AIR in C MAJOR

(from: *A Choice Collection of Ayres - Various*)
for Trumpet & Organ

Score (01':40")

Jeremiah Clarke (c.1674 - 1707)

Arr. Michel Rondeau

1. Marche $\text{♩} = 80$

Trumpet in C

Organ

This system contains the first five measures of the piece. The Trumpet in C part is written in a single treble clef staff. The Organ part consists of two staves: a treble clef staff for the right hand and a bass clef staff for the left hand. The music is in common time (C) and C major. The organ accompaniment features a steady bass line and chords that support the trumpet's melody.

C Tpt.

Org.

This system contains measures 6 through 10. The C Trumpet part begins at measure 6 with a rest, then enters with a melodic line. The Organ part continues with its accompaniment. A repeat sign is present at the end of measure 10, indicating the start of a second ending.

C Tpt.

Org.

This system contains measures 11 through 15. The C Trumpet part continues with its melodic line. The Organ part provides accompaniment. A repeat sign is present at the end of measure 15, indicating the end of the piece.

MARCH and AIR in C MAJOR - Clarke - Score

2. Air

C Tpt. 17

Org. 17

Detailed description: This system covers measures 17 to 21. The C Tpt. part starts with a whole rest in measure 17, followed by a repeat sign. In measure 18, it plays a quarter rest, then eighth notes G4, A4, B4, C5, and a quarter note G4. In measure 19, it plays eighth notes G4, A4, B4, C5, and a quarter note G4. In measure 20, it plays eighth notes G4, A4, B4, C5, and a quarter note G4. In measure 21, it plays eighth notes G4, A4, B4, C5, and a quarter note G4. The Org. part has a treble and bass staff. In measure 17, the treble staff has a quarter rest and the bass staff has a quarter note G3. In measure 18, the treble staff has eighth notes G4, A4, B4, C5 and the bass staff has eighth notes G3, A3, B3, C4. In measure 19, the treble staff has eighth notes G4, A4, B4, C5 and the bass staff has eighth notes G3, A3, B3, C4. In measure 20, the treble staff has eighth notes G4, A4, B4, C5 and the bass staff has eighth notes G3, A3, B3, C4. In measure 21, the treble staff has eighth notes G4, A4, B4, C5 and the bass staff has eighth notes G3, A3, B3, C4.

C Tpt. 22

Org. 22

Detailed description: This system covers measures 22 to 26. The C Tpt. part starts with eighth notes G4, A4, B4, C5, followed by eighth notes G4, A4, B4, C5, and a quarter note G4. In measure 23, it plays eighth notes G4, A4, B4, C5, followed by eighth notes G4, A4, B4, C5, and a quarter note G4. In measure 24, it plays eighth notes G4, A4, B4, C5, followed by eighth notes G4, A4, B4, C5, and a quarter note G4. In measure 25, it plays a whole note G4. In measure 26, it plays a whole note G4. The Org. part has a treble and bass staff. In measure 22, the treble staff has a whole note chord G4-A4-B4-C5 and the bass staff has a whole note G3. In measure 23, the treble staff has a whole note chord G4-A4-B4-C5 and the bass staff has a whole note G3. In measure 24, the treble staff has a whole note chord G4-A4-B4-C5 and the bass staff has a whole note G3. In measure 25, the treble staff has a whole note chord G4-A4-B4-C5 and the bass staff has a whole note G3. In measure 26, the treble staff has a whole note chord G4-A4-B4-C5 and the bass staff has a whole note G3.

C Tpt. 27

Org. 27

Detailed description: This system covers measures 27 to 31. The C Tpt. part starts with a whole rest in measure 27, followed by a repeat sign. In measure 28, it plays a quarter rest, then eighth notes G4, A4, B4, C5, and a quarter note G4. In measure 29, it plays eighth notes G4, A4, B4, C5, and a quarter note G4. In measure 30, it plays eighth notes G4, A4, B4, C5, and a quarter note G4. In measure 31, it plays eighth notes G4, A4, B4, C5, and a quarter note G4. The Org. part has a treble and bass staff. In measure 27, the treble staff has a whole note chord G4-A4-B4-C5 and the bass staff has a whole note G3. In measure 28, the treble staff has a whole note chord G4-A4-B4-C5 and the bass staff has a whole note G3. In measure 29, the treble staff has a whole note chord G4-A4-B4-C5 and the bass staff has a whole note G3. In measure 30, the treble staff has a whole note chord G4-A4-B4-C5 and the bass staff has a whole note G3. In measure 31, the treble staff has a whole note chord G4-A4-B4-C5 and the bass staff has a whole note G3.

C Tpt. 32

Org. 32

Detailed description: This system covers measures 32 to 36. The C Tpt. part starts with eighth notes G4, A4, B4, C5, followed by eighth notes G4, A4, B4, C5, and a quarter note G4. In measure 33, it plays eighth notes G4, A4, B4, C5, followed by eighth notes G4, A4, B4, C5, and a quarter note G4. In measure 34, it plays eighth notes G4, A4, B4, C5, followed by eighth notes G4, A4, B4, C5, and a quarter note G4. In measure 35, it plays a whole note G4. In measure 36, it plays a whole note G4. The Org. part has a treble and bass staff. In measure 32, the treble staff has a whole note chord G4-A4-B4-C5 and the bass staff has a whole note G3. In measure 33, the treble staff has a whole note chord G4-A4-B4-C5 and the bass staff has a whole note G3. In measure 34, the treble staff has a whole note chord G4-A4-B4-C5 and the bass staff has a whole note G3. In measure 35, the treble staff has a whole note chord G4-A4-B4-C5 and the bass staff has a whole note G3. In measure 36, the treble staff has a whole note chord G4-A4-B4-C5 and the bass staff has a whole note G3.

MARCH and AIR in C MAJOR

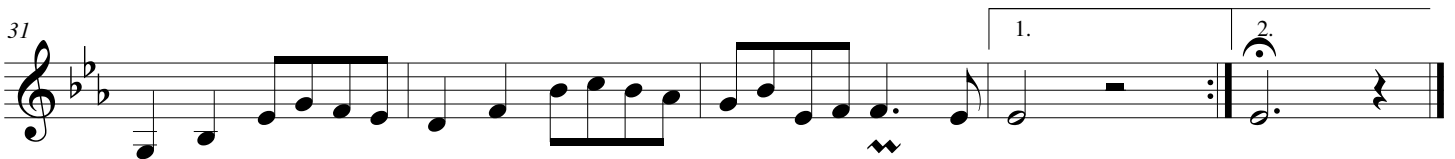
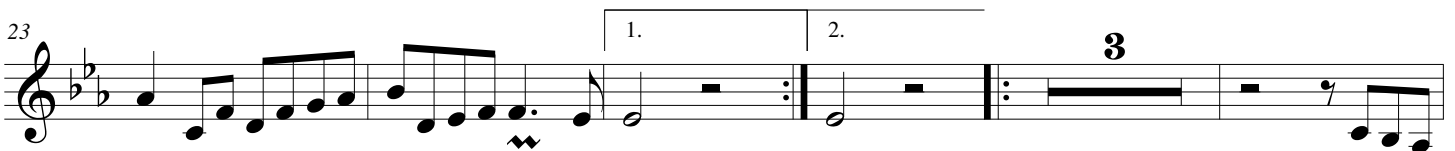
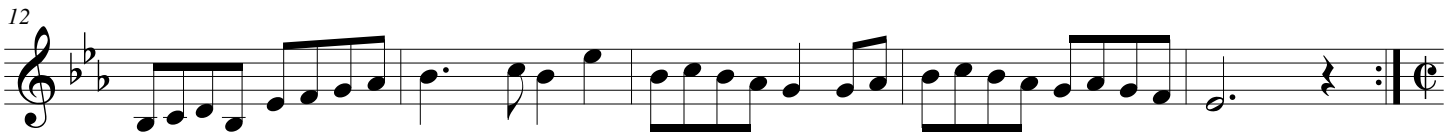
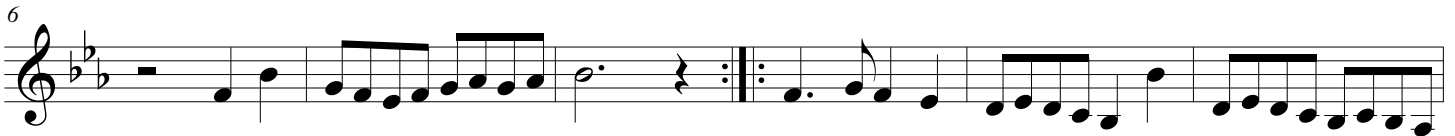
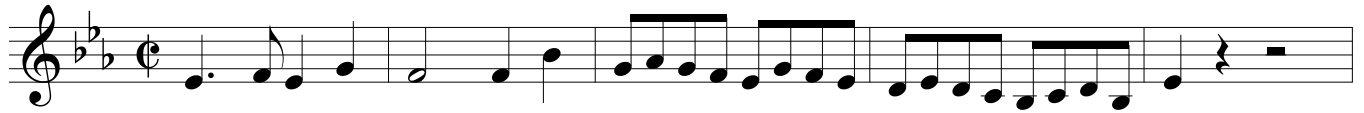
(from: *A Choice Collection of Ayres - Various*)
for Trumpet & Organ

Trumpet in A

Jeremiah Clarke (c.1674 - 1707)

Arr. Michel Rondeau

1. Marche ♩ = 80



MARCH and AIR in C MAJOR

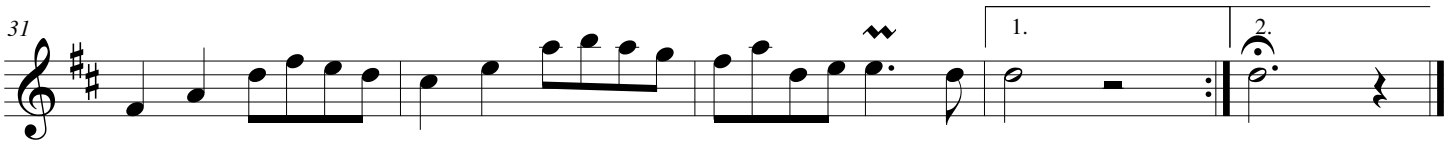
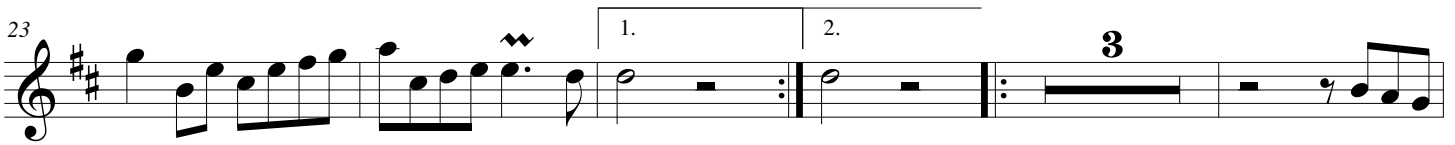
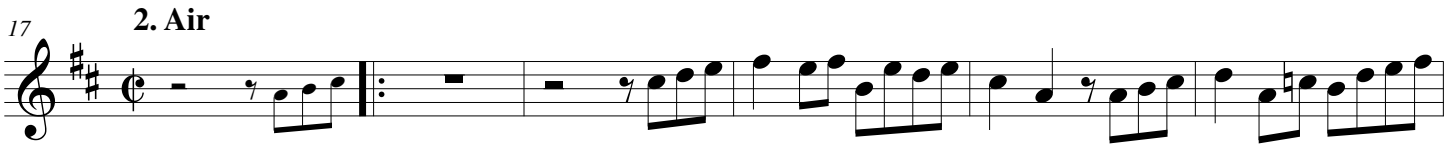
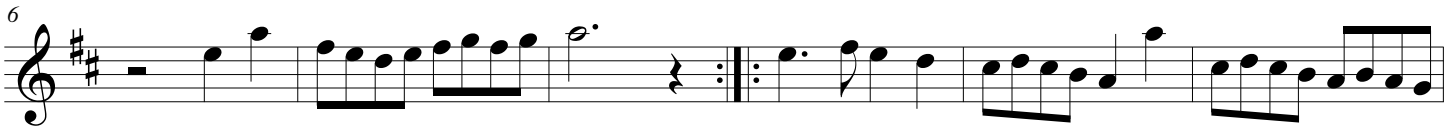
(from: *A Choice Collection of Ayres - Various*)
for Trumpet & Organ

Trumpet in B \flat

Jeremiah Clarke (c.1674 - 1707)

Arr. Michel Rondeau

1. Marche $\text{♩} = 80$



MARCH and AIR in C MAJOR

(from: *A Choice Collection of Ayres - Various*)
for Trumpet & Organ

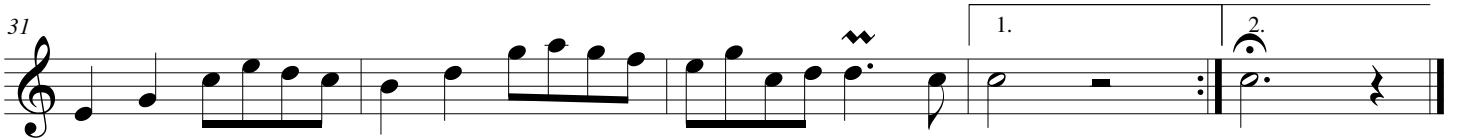
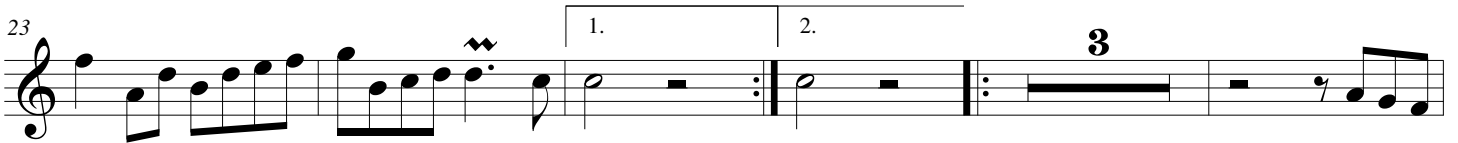
Trumpet in C

Jeremiah Clarke (c.1674 - 1707)
Arr. Michel Rondeau

1. Marche ♩ = 80



17 2. Air



MARCH and AIR in C MAJOR

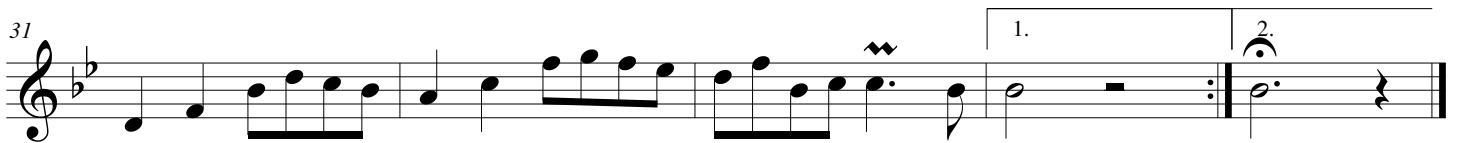
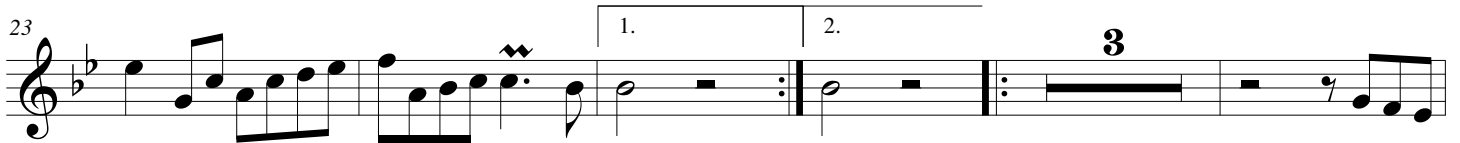
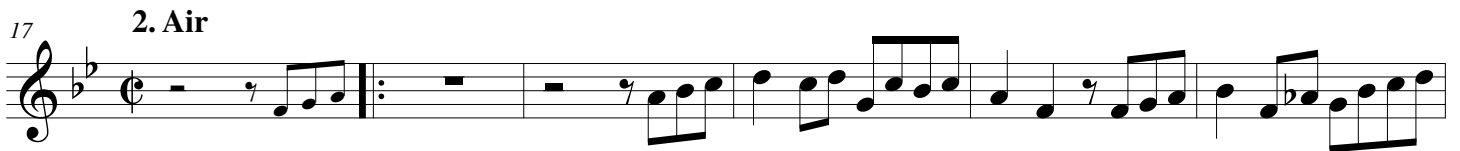
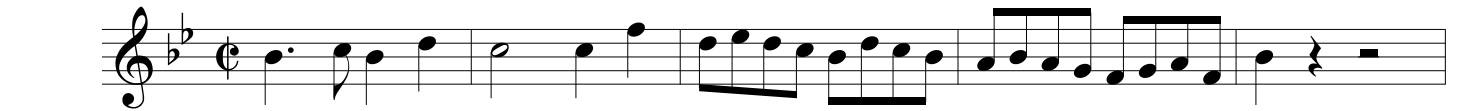
(from: *A Choice Collection of Ayres - Various*)
for Trumpet & Organ

Trumpet in D

Jeremiah Clarke (c.1674 - 1707)

Arr. Michel Rondeau

1. Marche ♩ = 80



MARCH and AIR in C MAJOR

(from: A Choice Collection of Ayres - Various)
for Trumpet & Organ

Organ

Jeremiah Clarke (c.1674 - 1707)

Arr. Michel Rondeau

Trumpet in C

1. Marche ♩ = 80

Organ

C Tpt.

Org.

C Tpt.

Org.

MARCH and AIR in C MAJOR - Clarke - Organ

17 2. Air

C Tpt.

Org.

22

C Tpt.

Org.

27

C Tpt.

Org.

32

C Tpt.

Org.