

# SEPT GAVOTTES

(de: Bransles & Les Gavottes, No.7 - 1612)

pour Trompette et Orgue

Score (03':50")

Pierre - Francisque Caroubel (1556 - c.1611)

Arr. Michel Rondeau

## Gavotte I $\text{♩} = 76$

Trumpet in C

Organ

## Gavotte II

C Tpt.

Org.

C Tpt.

Org.


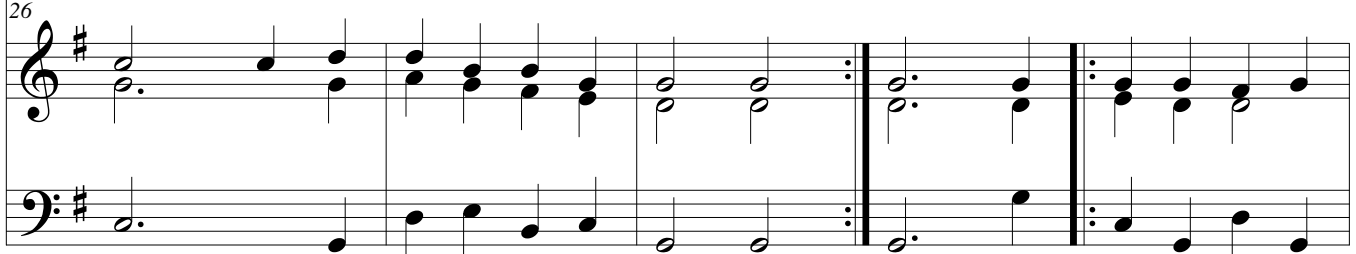
SEPT GAVOTTES - Carouble - Score

Gavotte III

C Tpt.    
 Org. 

Gavotte IV

C Tpt.    
 Org. 

C Tpt.    
 Org. 

Gavotte V

C Tpt.    
 Org. 

36

C Tpt.

Org.

Detailed description: This system contains the first two staves of music starting at measure 36. The C Tpt. staff (top) begins with a treble clef and a key signature of one flat. The melody consists of quarter and eighth notes, with a repeat sign at the end of the first phrase. The Organ (Org.) staff (bottom) is a grand staff with treble and bass clefs. It provides harmonic support with chords and moving lines in both hands, including a repeat sign.

41

C Tpt.

Gavotte VI

Org.

Detailed description: This system contains the second two staves of music starting at measure 41. The C Tpt. staff (top) continues the melody with a treble clef and a key signature of one flat. The Organ (Org.) staff (bottom) continues the accompaniment. A section titled "Gavotte VI" is indicated by a double bar line and a common time signature (C) above the staff.

46

C Tpt.

Org.

Detailed description: This system contains the third two staves of music starting at measure 46. The C Tpt. staff (top) continues the melody with a treble clef and a key signature of one flat. The Organ (Org.) staff (bottom) continues the accompaniment with chords and moving lines in both hands.

51

C Tpt.

Org.

Detailed description: This system contains the fourth two staves of music starting at measure 51. The C Tpt. staff (top) continues the melody with a treble clef and a key signature of one flat. The Organ (Org.) staff (bottom) continues the accompaniment with chords and moving lines in both hands.

## SEPT GAVOTTES - Carouble - Score

## Gavotte VII

C Tpt.

Org.

56

C Tpt.

Org.

61

C Tpt.

Org.

66

# SEPT GAVOTTES

(de: Bransles & Les Gavottes, No.7 - 1612)

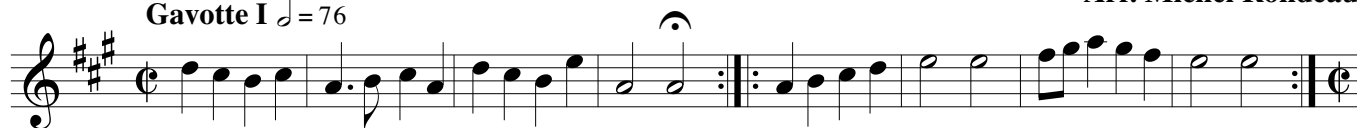
pour Trompette et Orgue

## Trompette en Si $\flat$

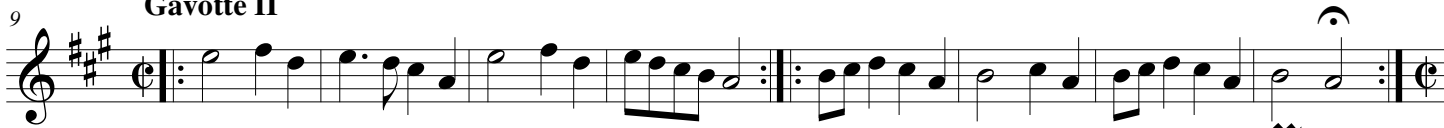
Pierre - Francisque Caroubel (1556 - c.1611)

Arr. Michel Rondeau

### Gavotte I $\text{♩} = 76$



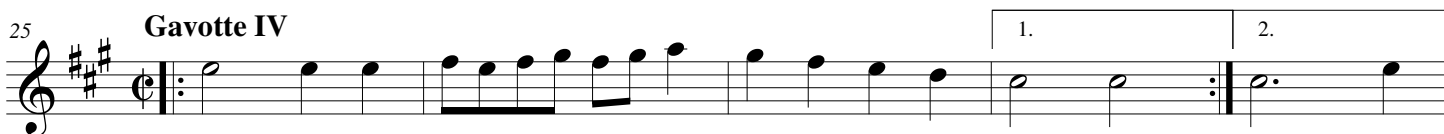
### Gavotte II



### Gavotte III



### Gavotte IV



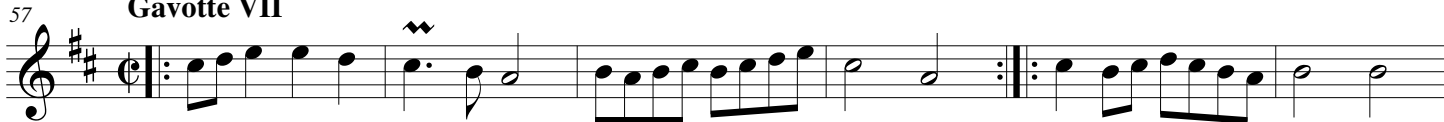
### Gavotte V



### Gavotte VI



### Gavotte VII



# SEPT GAVOTTES

(de: Bransles & Les Gavottes, No.7 - 1612)

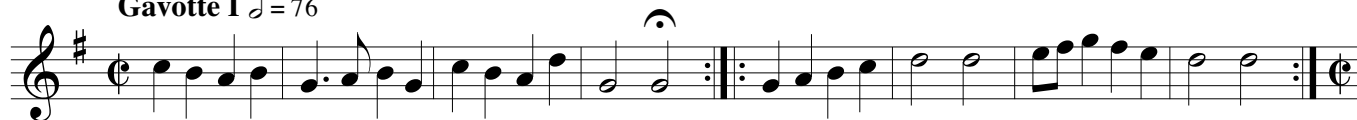
pour Trompette et Orgue

## Trompette en Do

Pierre - Francisque Caroubel (1556 - c.1611)

Arr. Michel Rondeau

### Gavotte I $\text{♩} = 76$



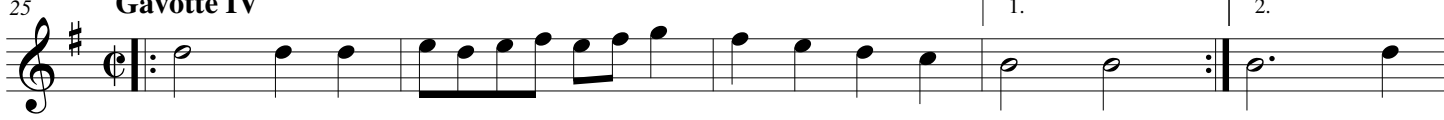
### 9 Gavotte II



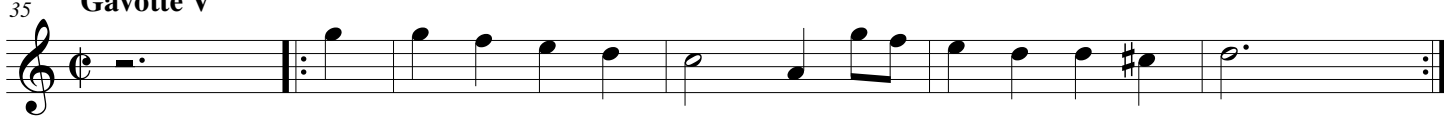
### 17 Gavotte III



### 25 Gavotte IV



### 35 Gavotte V



### 45 Gavotte VI



### 57 Gavotte VII



# SEPT GAVOTTES

(de: Bransles & Les Gavottes, No.7 - 1612)

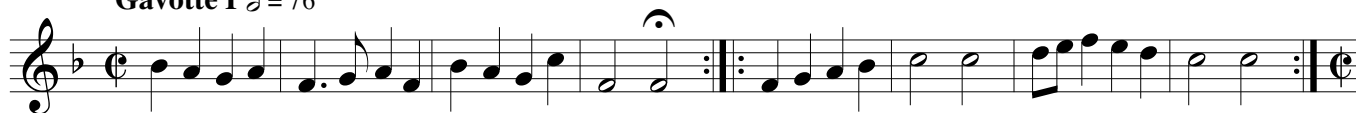
pour Trompette et Orgue

## Trompette en Ré

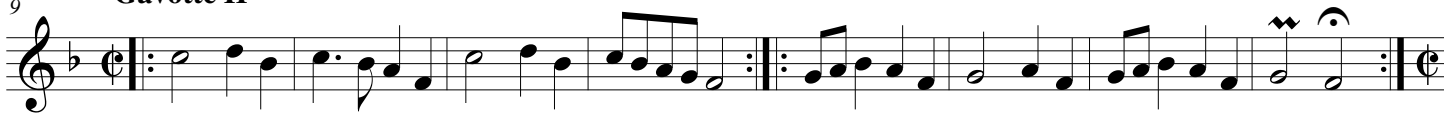
Pierre - Francisque Caroubel (1556 - c.1611)

Arr. Michel Rondeau

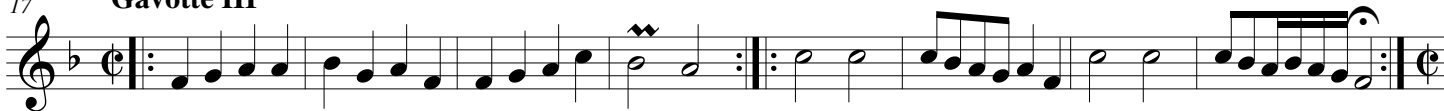
### Gavotte I $\text{♩} = 76$



### 9 Gavotte II



### 17 Gavotte III



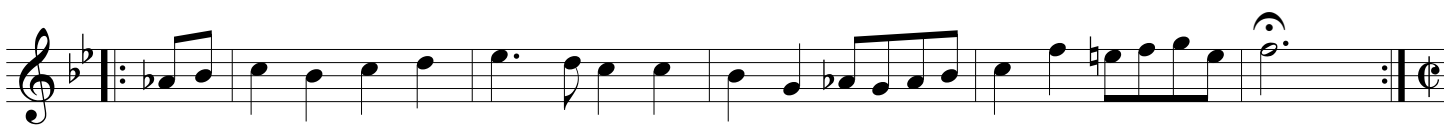
### 25 Gavotte IV



### 30



### 35 Gavotte V



### 45 Gavotte VI



### 50



### 57 Gavotte VII



### 63



# SEPT GAVOTTES

(de: Bransles & Les Gavottes, No.7 - 1612)  
pour Trompette et Orgue

## Orgue

Pierre - Francisque Caroubel (1556 - c.1611)  
Arr. Michel Rondeau

Trumpet in C

Gavotte I  $\text{♩} = 76$

Musical score for Gavotte I, measures 1-5. The Trumpet in C part is in the treble clef with a key signature of one sharp (F#) and a common time signature. The Organ part consists of two staves, treble and bass clefs, with the same key signature and time signature. The organ accompaniment features a steady eighth-note bass line and a treble line with chords and some eighth-note patterns.

C Tpt.

Gavotte II

Musical score for Gavotte II, measures 6-10. The C Trumpet part is in the treble clef with a key signature of one sharp (F#) and a common time signature. The Organ part consists of two staves, treble and bass clefs, with the same key signature and time signature. The organ accompaniment features a steady eighth-note bass line and a treble line with chords and some eighth-note patterns.

C Tpt.

Gavotte II

Musical score for Gavotte II, measures 11-15. The C Trumpet part is in the treble clef with a key signature of one sharp (F#) and a common time signature. The Organ part consists of two staves, treble and bass clefs, with the same key signature and time signature. The organ accompaniment features a steady eighth-note bass line and a treble line with chords and some eighth-note patterns.



SEPT GAVOTTES - Carouble - Orgue

C Tpt. 


Org. 

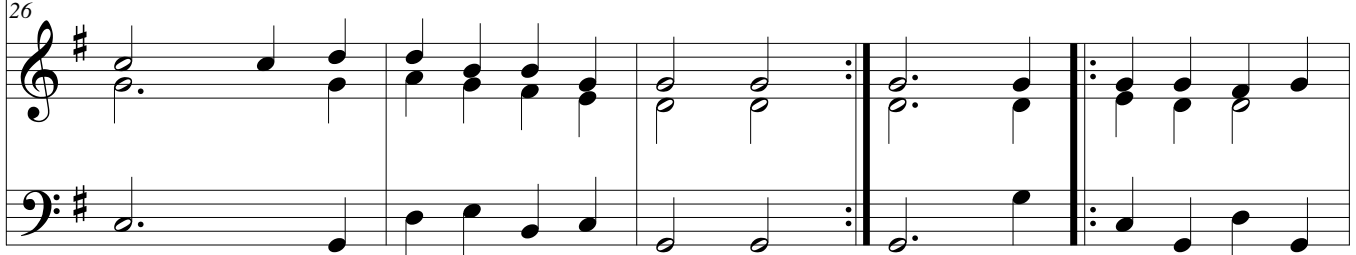
Gavotte III

C Tpt. 

Org. 

Gavotte IV

C Tpt. 

Org. 

C Tpt. 

Org. 

Gavotte V

SEPT GAVOTTES - Carouble - Orgue

C Tpt. <sup>36</sup>

Org. <sup>36</sup>

Detailed description: This system contains the first system of music, starting at measure 36. The C Tpt. part is on a single staff with a treble clef. The Org. part consists of two staves, treble and bass clefs. Both parts feature a melodic line with a repeat sign and a first ending. The key signature has one flat (B-flat).

C Tpt. <sup>41</sup>

Org. <sup>41</sup>

Gavotte VI

Detailed description: This system contains the second system of music, starting at measure 41. The C Tpt. part is on a single staff with a treble clef. The Org. part consists of two staves, treble and bass clefs. The title 'Gavotte VI' is written above the right-hand organ staff. Both parts feature a melodic line with a repeat sign and a first ending. The key signature has one flat (B-flat).

C Tpt. <sup>46</sup>

Org. <sup>46</sup>

Detailed description: This system contains the third system of music, starting at measure 46. The C Tpt. part is on a single staff with a treble clef. The Org. part consists of two staves, treble and bass clefs. Both parts feature a melodic line with a repeat sign and a first ending. The key signature has one flat (B-flat).

C Tpt. <sup>51</sup>

Org. <sup>51</sup>

Detailed description: This system contains the fourth system of music, starting at measure 51. The C Tpt. part is on a single staff with a treble clef. The Org. part consists of two staves, treble and bass clefs. Both parts feature a melodic line with a repeat sign and a first ending. The key signature has one flat (B-flat).

## SEPT GAVOTTES - Carouble - Orgue

C Tpt.

56

Gavotte VII

Org.

56

C Tpt.

61

Org.

61

C Tpt.

66

Org.

66