

VO-R



[Graun, Konsert, Violin-, E.]

Concerto per il Violino Solo  
in E. #.  $\frac{3}{4}$  —  
a 5. Parte.

Violino Principale. — 1.

Violino 1<sup>o</sup> — 11.

Violino 2<sup>o</sup> — 11.

Violino 3<sup>o</sup> — 1.

Basso — 11.

da Grave.

[Graun, Konzert, Violin, E.]

VO-R

# Concerto E#

## Violino Principale

Handwritten musical score for Violino Principale, Concerto in E major by Georg Philipp Telemann. The score consists of eight staves of music. The key signature is E major (two sharps) and the time signature is 4/4. The notation includes various musical symbols such as notes, rests, and accidentals. The word "Solo" is written below the sixth staff, and a "4" is written above the eighth staff.



Gottfried







*Largo*

A handwritten musical score for a piece titled "Largo". The score is written on ten staves, arranged in five pairs. Each staff begins with a treble clef and a key signature of two sharps (F# and C#). The notation is dense and complex, featuring a variety of note values, rests, and dynamic markings. The first staff contains a large, ornate initial 'C' at the beginning. The second staff has a large, ornate initial 'F' at the beginning. The third staff has a large, ornate initial 'G' at the beginning. The fourth staff has a large, ornate initial 'A' at the beginning. The fifth staff has a large, ornate initial 'B' at the beginning. The sixth staff has a large, ornate initial 'C' at the beginning. The seventh staff has a large, ornate initial 'D' at the beginning. The eighth staff has a large, ornate initial 'E' at the beginning. The ninth staff has a large, ornate initial 'F' at the beginning. The tenth staff has a large, ornate initial 'G' at the beginning. The notation is dense and complex, featuring a variety of note values, rests, and dynamic markings. The score is written in a cursive, handwritten style, typical of 18th or 19th-century musical notation.

Four empty musical staves at the bottom of the page, arranged in two pairs. Each staff is a five-line staff with a treble clef and a key signature of two sharps (F# and C#). The staves are empty, with no notation or markings.



*Folle Rivace*

# *Vivace*

A handwritten musical score for a piece titled "Vivace". The score is written on ten staves, each beginning with a treble clef and a key signature of three sharps (F#, C#, G#). The notation is in a single system, with the staves connected by a brace on the left. The music features a variety of rhythmic patterns, including eighth and sixteenth notes, and rests. The tempo is indicated by the word "Vivace" at the top. The score includes a section marked "Solo" in the middle, which is characterized by rapid, repeated eighth-note patterns. The handwriting is clear and legible, typical of a composer's manuscript.





[Graun, Konzert, Violin, E]

VO-R

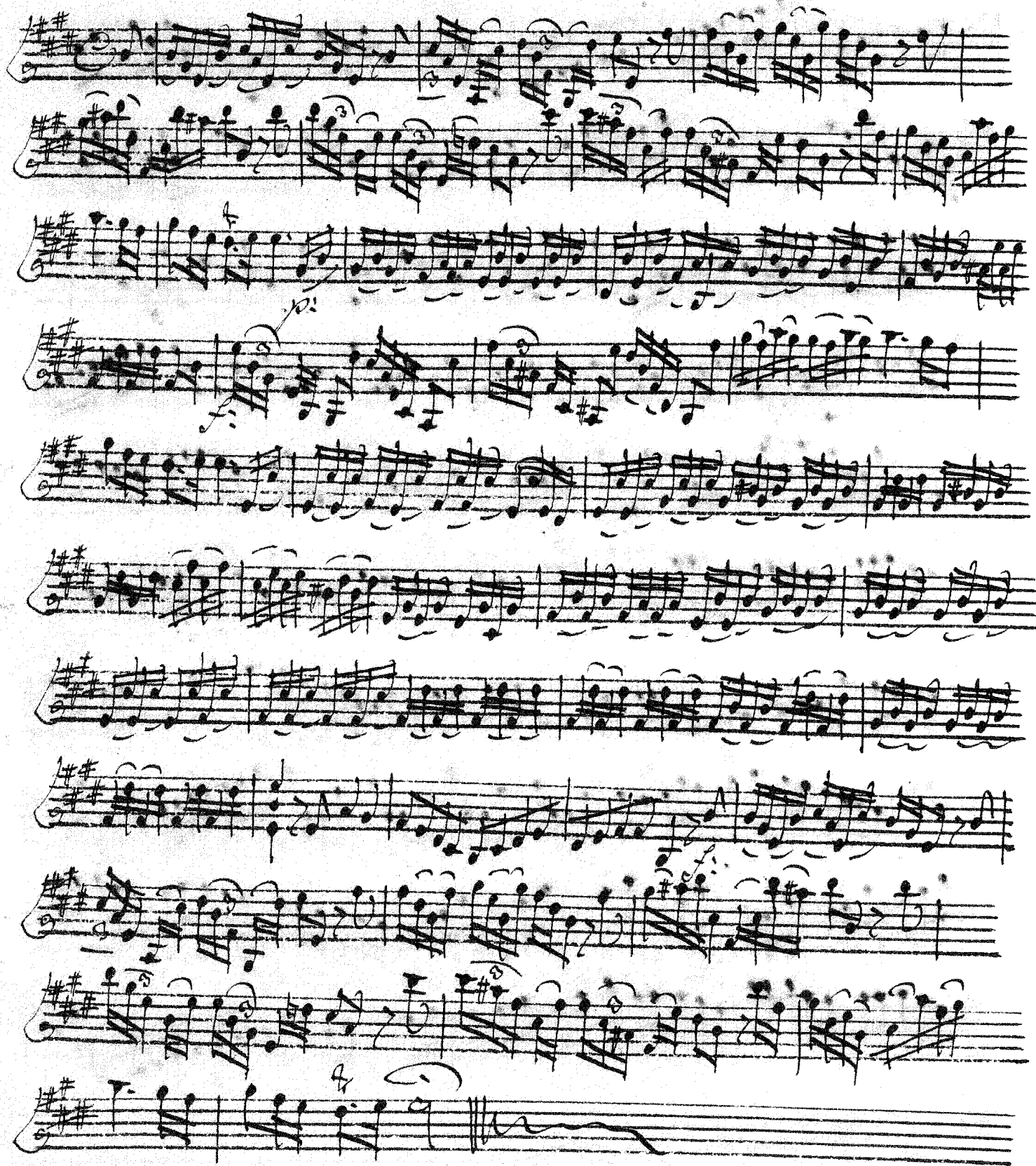
Concerto E#.

Violino Primo

Handwritten musical score for Violino Primo, Concerto E# by Graun. The score consists of 12 staves of music in E major (three sharps) and 2/4 time. The notation includes various musical symbols such as notes, rests, and accidentals. A '2' is written above the first staff, and a 'VS' is written above the fifth staff.

Handwritten musical score on ten staves. The notation is in treble clef with a key signature of two sharps (F# and C#). The music is written in a fluid, handwritten style, featuring various note values, rests, and dynamic markings. The score is divided into measures by vertical bar lines. A measure number '11' is written above the first staff, and a measure number '16' is written above the sixth staff. The notation includes many beamed notes, suggesting a fast or rhythmic passage. The final staff ends with a double bar line and a wavy line, indicating the end of the piece.

*Largo*



*Vivace*

Handwritten musical score for a piece titled "Vivace". The score is written on 11 staves, each beginning with a treble clef and a key signature of one sharp (F#). The time signature is 3/4. The notation includes various note values, rests, and dynamic markings. The piece concludes with a double bar line and a decorative flourish. A circular stamp is visible in the bottom right corner.

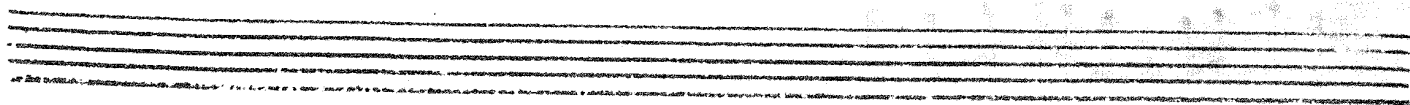


[Graun, Konzert, Violin-, E.]

VO-K

Concerto E $\sharp$  Violino Secondo

This image shows a handwritten musical score for the Violino Secondo part of a Concerto in E major by Georg Philipp Telemann. The score is written on ten staves, each beginning with a treble clef, a key signature of two sharps (F# and C#), and a 7/8 time signature. The notation is dense, featuring a variety of note values including eighth, sixteenth, and thirty-second notes, as well as rests and accidentals. The handwriting is in dark ink on aged, slightly yellowed paper. The staves are numbered 1 through 10 at the beginning of each line. The music is written in a continuous, flowing manner, typical of the Baroque concerto style.



*Largo*



*Vivace*





Concerto E# [Graun, Konzert, Violin-, E.]  
Violino 3te

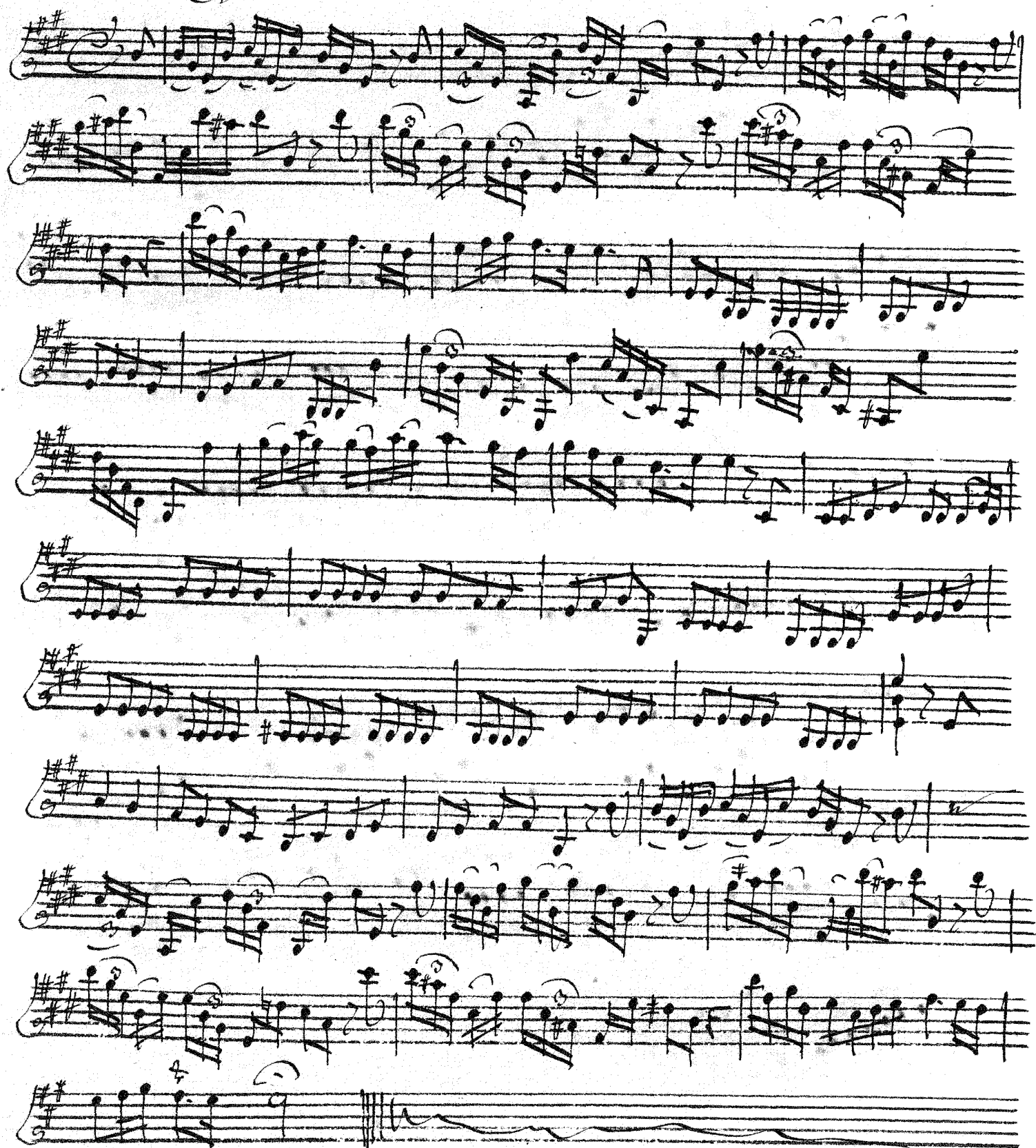


VO-R

Handwritten musical score for Violino 3te, consisting of 11 staves. The key signature is E major (two sharps: F# and C#). The notation includes various musical symbols such as notes, rests, and dynamic markings. A 'Vz' marking is present above the fifth staff. The score is written in a cursive, handwritten style.



*Largo*



# Givace

A handwritten musical score for a piece titled "Givace". The score is written on ten staves, each beginning with a treble clef and a key signature of two sharps (F# and C#). The notation includes various musical symbols such as eighth notes, sixteenth notes, and rests. There are several instances of the number "22" written above the staves, likely indicating measure numbers. The score concludes with a double bar line and a wavy line, suggesting the end of the piece. The handwriting is in black ink on aged paper.



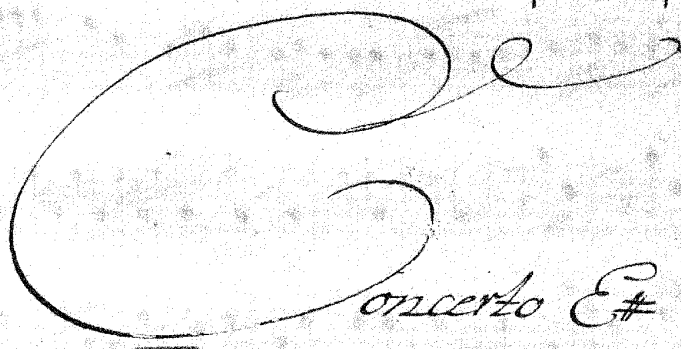


No 253

VO-R

[Graun, Konsert, Violin-, E.]

No 1



Concerto E#

a

Violino Concertino

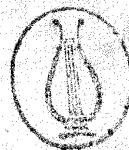
Violino = Primo

Violino = Secondo

Violino = 3te

Con

Basso



di Graue

*Concerto*

*Barolo*





*Largo*

