

TO EDWIN EVANS.

# Quintet

In G minor

For Piano and Strings.

BY

ARNOLD BAX.

AB

London

MURDOCH, MURDOCH & Co.,

23, Princes Street, Oxford Circus, W. 1.

(Incorporated with J. G. MURDOCH & Co., Ltd.)



QUINTET.

Cello.

Nº 1.

Arnold Bax.

**Tempo moderato. *Con passione***

[illegible]

## Cello.

arco  
pizz.  
pp  
f  
p  
mf dim.  
arco  
pizz.  
f  
arco  
p  
Tempo un poco più tranquillo.  
(C) a tempo primo  
pp  
f very rhythmic  
molto ritmico  
sf  
p  
2  
sf  
p  
pizz.  
arco  
p  
f  
(D)  
f  
pizz.  
arco  
pizz.  
arco  
accel.  
Più mosso.  
1  
f  
f  
(E) Tempo I.  
pizz.  
glide  
arco  
sfp  
p

The musical score for Cello, page 3, begins with a key signature of one flat (B-flat). The first staff features a series of eighth and sixteenth notes, marked with *sf* and *dim.*, followed by a *pizz.* (pizzicato) section and an *arco* (arco) section with a triplet of eighth notes. The second staff is marked *Poco più lento.* and begins with a *f* (forte) dynamic, followed by *pp* (pianissimo) and *sul ponticello* (on the bridge). The third staff includes a *natural* marking and a crescendo leading to *f* and *dim.*, ending with *pp* and a circled *F*. The fourth staff is marked *Allargando.* and includes a *cresc.* (crescendo) marking. The fifth staff changes the key signature to two sharps (D major) and is marked *Moderato.* with a first ending bracket. It includes *pizz.* and *con soruino* (with sordino) markings. The sixth staff continues with *arco* and *pizz.* markings. The seventh staff, marked with a circled *G*, is *senza sordino* and features a triplet of eighth notes marked *pp* *murmurous* *murmurando*. The eighth staff continues the triplet pattern, marked *mf* and *f*. The ninth staff features a *f* dynamic and a *mf* *< >* marking. The tenth staff, marked with a circled *H*, includes *pizz.* and *arco* markings, ending with a triplet of eighth notes.

## Cello.

pizz. con sord. 1 arco *poco sf* *p* *mf* *fp* 3

*pp* *accel.* *pp cresc.*

(I) *a tempo* *f flowing* *f*

senza sordino pizz. arco *mf=f-p* *f* *p* *p* *wailing* *f*

(K) *p* *cresc.* *f*

*f* *tr*

(L) *a tempo* *rit.* *5* *Allargando.* *4* *p sighing sospirando* *pp* *p* *pp*

Tempo primo. Viola. *ppp* *2* *5* *2*

con sord. *pp* *3* *3* *3* *3* *pizz.* *rit.* *p*

**M. M. & C<sup>o</sup> 317**

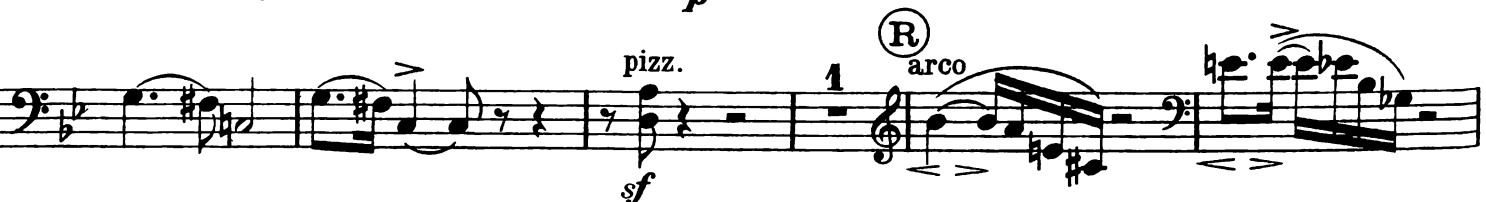
## Cello.



Rough and fierce.

*Feroce.*

Ⓚ Poco lento.

*accel. molto*



## Cello.

7

The musical score for Cello, page 7, is written in 3/8 time and B-flat major. It consists of ten staves of music. The first two staves feature rapid sixteenth-note passages with triplets, marked with *f* and *p*. The third staff includes *f dim.*, *fp dim.*, *pp*, *sul ponticello*, *con sord. 2* (S), and *pizz.*. The fourth staff is marked *arco* and *pp*. The fifth staff is marked *cantabile singing*, *p*, *mf*, and *pp*. The sixth staff includes *pizz.*, *mf*, *p*, *p*, *arco*, and *p*. The seventh staff includes *p*, *fp*, *pp*, *accel.*, and *ppp*. The eighth staff is marked *(T) a tempo*, *f flowing*, and features a triplet. The ninth staff includes *sf*, *mf*, *pizz.*, *f*, *p*, *arco*, and *rit.*. The tenth staff is marked *Più lento.*, *pp*, *ppp*, and features a triplet. The score concludes with a double bar line and repeat signs.

## Nº 2.

Slow and serious

*Lento serio*

pizz.

*f* *dim.* *p* *always soft sempre piano* *p*  
*mf* *decisive deciso* *arco* *3* *pizz.* *mf*  
*cresc.* *mf* *pp* *pp* *mf*  
*arco* *dim.* *f* *p cresc. f*  
 (A) *3* *p* *cresc.* *f* *p* *cresc.* *f* *dim.* *p*  
*a little faster cold and unemotional poco più mosso freddo senza espressione*  
*consord.* *2* *pp* *1* *pp* *p*  
*senza sord.* *pizz.* *f* *con sord.* *arco* *1* *ppp* *f*  
*p dim.* *pp* *1* *p* *2*  
 (B) *3* *mf* *dim.* *p* *f* *f* *f* *2*  
*arco* *3* *f*  
*pizz.* *f* *3* *arco*

M. M. & C<sup>o</sup> 317

## Nº 3.

Moderate Tempo.

*Tempo Moderato.*

5 pizz. 2 arco 5

*mp* 3 3 *p* *cresc.* 5 *f* *pp*

(A) *ff* 8 *Piano* 3 *f*

*accel.* *ff*

*Allegro vivace.* 1 pizz. *f*

*sfz* *f* *boldy* 5

5 *poco tenuto* 1

*a tempo* pizz. *f* arco *f* *ff*

(B) 3 3 *f* *fp* pizz. *ff*

arco  
*fp staccato*  
*f*  
 pizz.  
*p*

cresc.  
*fp*  
*f*

pizz.  
*pp*  
 arco  
*pp*  
*fp*

pizz.  
*pp*  
 arco  
*pp*  
*fp*

*pp*  
*pp*  
*p*  
*fp*  
*fp*

pizz.  
*p*  
 arco  
*f*  
*f*

*f*  
*ff*  
 pizz.  
*sf*  
*p*  
*f*

pizz.  
*sf*  
 arco  
*f*  
*ff*

*f*  
*sf*  
 3  
 rit.  
 1  
 2  
 Pocopiù  
 lento

## Cello.

con sord.  
pizz. 1 2 3 4

*pp*

5 6 7 8 1

arco  
*p* *p* *ppp* 2

pizz.  
*p*

*mf* con sord. 1

Piano *rit.* *a tempo ma non troppo presto* 5 *singing plaintively cantabile plantivo*

*cresc.*

7 *pp*

*mf* *dim.* *p* 1 2 *pp*

senza sord. 1st Viol. *accel.* 2 2nd Viol. & Viola

**Tempo I.**

*ff* *ff* *pizz.* *f* *arco* *f*

*5*

*poco tenuto* *1* *a tempo* *pizz.* *f*

*arco* *f* *ff* *molto rit.* *a tempo* *fp*

*pizz.* *f* *p* *cresc.*

*arco* *fp* *f* *pizz.* *pp* *p*

*arco* *pp* *pizz.* *p*

*arco* *fp* *pp* *p*

*pp* *poco a poco cresc.* *sf* *1*

## Cello.

Più largamente



Tempo del Introduzione

Tempo of the Introduction



Lento con gran espressione

Slow and concentrated in expression





*f* *sf* *f* *sf*

*f* *sf* *p* *f* *sf* *dim.* *p*

*pp* *sf* *f* *dim.* *pp* *non rit.*

1 Viola 3 2

*Cantabile.* *p* *mf* *pp*

*pp* *morendo* *Piano*

*p* *mf* *pp* *f*

*pizz.* *arco* *mf singing cantabile* *p*

*f* *sf dim.* *f dim.* *p* *pizz.* *arco* *ff dim. pp*