

RONDEAU in D MINOR (5)

Score (02':45")

(from: Overture in D minor, TWV 55:d1)

for 2 Violins, Viola & Bass Continuo

(Urtext)

Georg Philipp Telemann (1681 - 1767)

Rondeau ♩ = 120

Ed. Michel Rondeau

Musical score for Violin I, Violin II, Viola, and Double Bass, measures 1-4. The score is in D minor, common time (C), and 3/4 time signature. The tempo is marked as Rondeau ♩ = 120. The key signature has one flat (Bb). The Violin I part features a melodic line with eighth and sixteenth notes, including a trill in measure 3. The Violin II part provides a harmonic accompaniment with quarter and eighth notes. The Viola and Double Bass parts play a steady bass line with quarter notes.

Musical score for Violin I, Violin II, Viola, and Double Bass, measures 5-8. Measure 5 is marked with a '5' above the staff. The Violin I part continues its melodic line with a trill in measure 7. The Violin II part continues its accompaniment. The Viola and Double Bass parts continue their bass line. The section ends with repeat signs in all parts.

Musical score for Violin I, Violin II, Viola, and Double Bass, measures 9-12. The Violin I part continues its melodic line. The Violin II part continues its accompaniment. The Viola and Double Bass parts continue their bass line. The section ends with repeat signs in all parts.

RONDEAU in D MINOR (5) - Telemann - Score

12

Vln. I

Vln. II

Vla.

D.B.

17

Vln. I

Vln. II

Vla.

D.B.

22

Vln. I

Vln. II

Vla.

D.B.

RONDEAU in D MINOR (5) - Telemann - Score

27

Vln. I

Vln. II

Vla.

D.B.

32

Vln. I

Vln. II

Vla.

D.B.

37

Vln. I

Vln. II

Vla.

D.B.

D.C.

D.C.

D.C.

D.C.

RONDEAU in D MINOR (5)

Violin I

(from: Overture in D minor, TWV 55:d1)
for 2 Violins, Viola & Bass Continuo

Georg Philipp Telemann (1681 - 1767)

Ed. Michel Rondeau

Rondeau ♩ = 120

5

10

16

22

27

33

37

D.C.

RONDEAU in D MINOR (5)

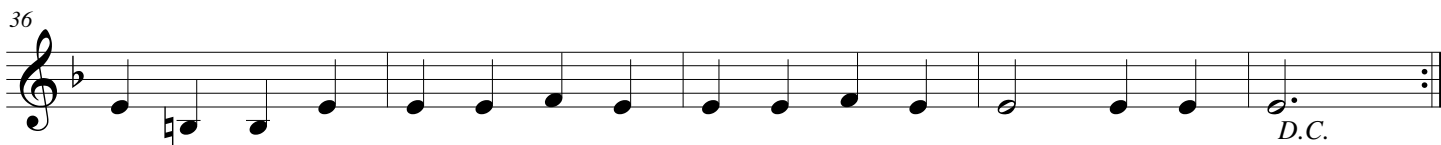
(from: *Ouverture in D minor, TWV 55:d1*)
for 2 Violins, Viola & Bass Continuo

Violin II

Georg Philipp Telemann (1681 - 1767)

Ed. Michel Rondeau

Rondeau ♩ = 120



RONDEAU in D MINOR (5)

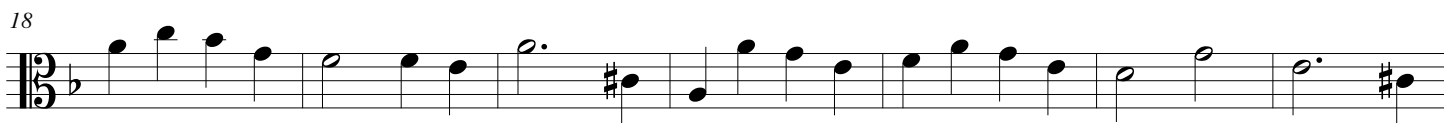
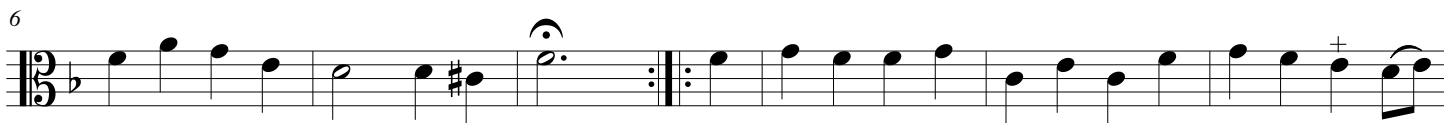
(from: *Ouverture in D minor, TWV 55:d1*)
for 2 Violins, Viola & Bass Continuo

Viola

Georg Philipp Telemann (1681 - 1767)

Ed. Michel Rondeau

Rondeau ♩ = 120



RONDEAU in D MINOR (5)

(from: *Ouverture in D minor, TWV 55:d1*)
for 2 Violins, Viola & Bass Continuo

Double Bass

Georg Philipp Telemann (1681 - 1767)

Ed. Michel Rondeau

Rondeau ♩ = 120

