

MENUET I - II (3)

(from: Overture - Suite in B-flat Major, TWV 55:B3)

Score (Urtext)

(01':48'')

Georg Philipp Telemann (1681 - 1767)

Ed. Michel Rondeau

Menuet I ♩ = 120

Musical score for Menuet I, measures 1-6. The score is for Violin I, Violin II, Viola, and Double Bass. The key signature is B-flat major (two flats) and the time signature is 3/4. The tempo is marked as ♩ = 120. The music features a simple, elegant melody in the Violin I part, supported by the other instruments.

Musical score for Menuet I, measures 7-10. The score is for Violin I (Vln. I), Violin II (Vln. II), Viola (Vla.), and Double Bass (D.B.). The key signature is B-flat major (two flats) and the time signature is 3/4. The music features a first ending (1.) and a second ending (2.) for the Violin I part. The first ending leads to the second ending, which then continues the melody. The Double Bass part includes a sharp sign (#) on the final note of measure 10.

13

Vln. I

Vln. II

Vla.

D.B.

1.

2.

$\frac{3}{4}$

19

Menuet II

Vln. I

Vln. II

Vla.

D.B.

$\frac{3}{4}$

25

Vln. I

Vln. II

Vla.

D.B.

MENUET I - II (3) - Telemann - Score

31

Vln. I

Vln. II

Vla.

D.B.

36

Vln. I

Vln. II

Vla.

D.B.

1.

2.

MENUET I - II (3)

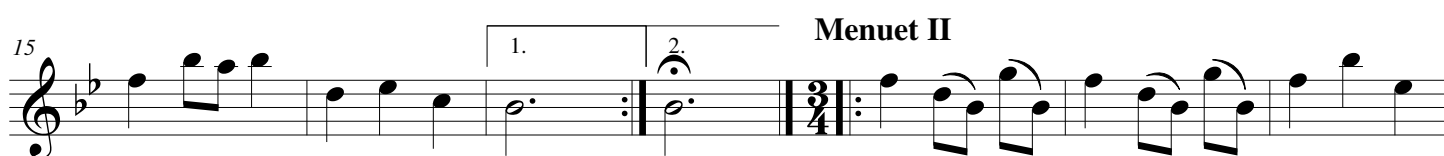
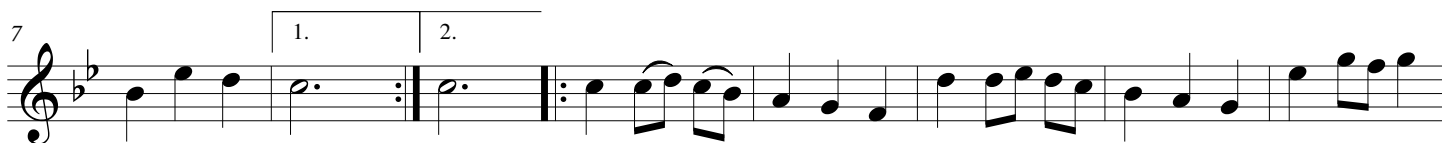
(from: Overture - Suite in B-flat Major, TWV 55:B3)
for Strings and Bass Continuo

Violin I

Georg Philipp Telemann (1681 - 1767)

Ed. Michel Rondeau

Menuet I ♩ = 120



MENUET I - II (3)

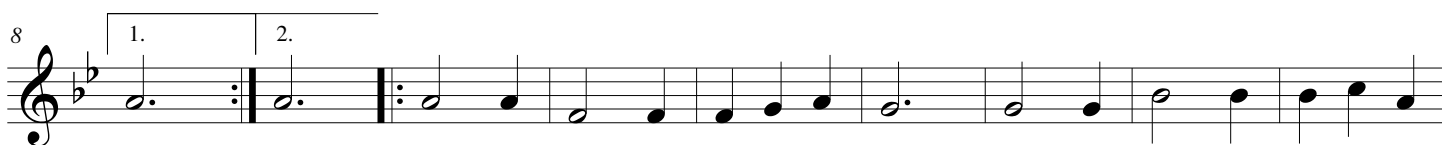
(from: Overture - Suite in B-flat Major, TWV 55:B3)
for Strings and Bass Continuo

Violin II

Georg Philipp Telemann (1681 - 1767)

Ed. Michel Rondeau

Menuet I ♩ = 120



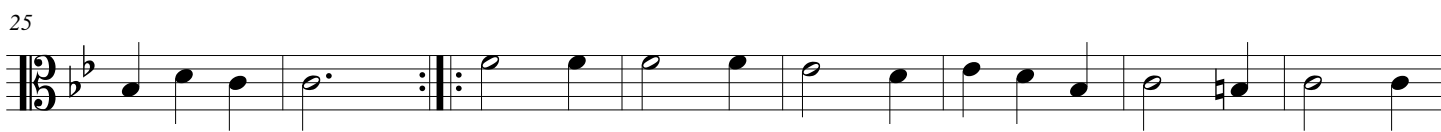
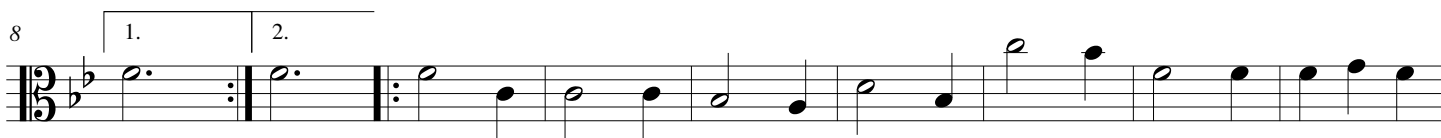
MENUET I - II (3)

(from: Overture - Suite in B-flat Major, TWV 55:B3)
for Strings and Bass Continuo

Viola

Georg Philipp Telemann (1681 - 1767)
Ed. Michel Rondeau

Menuet I ♩ = 120



MENUET I - II (3)

(from: Overture - Suite in B-flat Major, TWV 55:B3)
for Strings and Bass Continuo

Double Bass

Georg Philipp Telemann (1681 - 1767)
Ed. Michel Rondeau

Menuet I ♩ = 120

