

# SONATE DA CAMERA A TRE

Violino I

## Sonata I

Antonio Vivaldi, Op. 1

### PRELUDIO Grave

Vcll. p.

8

14

*piano*, *forte*

### ALLEMANDA Allegro

5

9

14

18

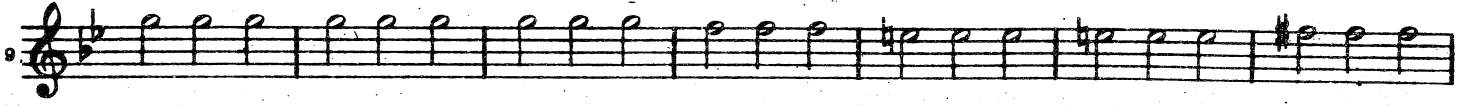
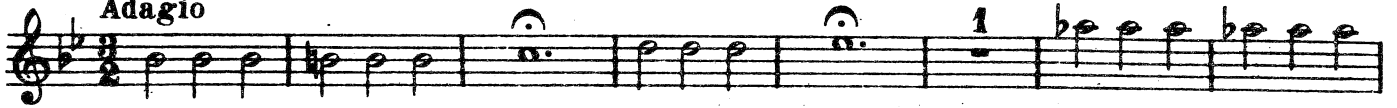
22

26

*piano* *forte*

Edwin F. Kalmus  
 Publisher of music  
 New York, N.Y.

Adagio



CAPRICCIO  
Allegro



GAVOTTA  
Allegro



# Sonata II

Grave

CORRENTE  
Allegro

Viol. II

forte

GIGA  
Allegro  
Cemb.

Musical score for the first movement, GIGA, in G major, 12/8 time, marked Allegro. The score consists of ten staves of music. The first staff begins with a treble clef, a key signature of one sharp (F#), and a 12/8 time signature. The music is characterized by a driving eighth-note pattern. A first ending bracket is placed above the eighth measure. The word *piano* is written below the eighth staff. The piece concludes with a double bar line and repeat dots at the end of the tenth staff.

GAVOTTA  
Allegro

Musical score for the second movement, GAVOTTA, in G major, 2/4 time, marked Allegro. The score consists of two staves of music. The first staff begins with a treble clef, a key signature of one sharp (F#), and a 2/4 time signature. The music features a rhythmic pattern of eighth and sixteenth notes. The piece concludes with a double bar line and repeat dots at the end of the second staff.

# Sonata III

Adagio

Musical notation for the first section, Adagio, measures 1-10. The music is written on a single staff in treble clef with a common time signature. It features a series of eighth and sixteenth notes, some with slurs and accents, and a key signature of one sharp (F#).

ALLEMANDA

Allegro

Musical notation for the second section, Allemanda, measures 11-32. The music is written on a single staff in treble clef with a common time signature. It features a series of eighth and sixteenth notes, some with slurs and accents, and a key signature of one sharp (F#). The tempo is marked Allegro. Measure 11 includes a repeat sign. Measure 15 includes the marking *piano*. The section ends with a double bar line and repeat dots.

Adagio

Musical notation for the third section, Adagio, measures 33-34. The music is written on a single staff in treble clef with a common time signature. It features a series of eighth and sixteenth notes, some with slurs and accents, and a key signature of one sharp (F#).

SARABANDA

Allegro

Viol. II

Musical score for Violino I, Sarabanda. The score consists of four staves of music. The first staff begins with a treble clef, a key signature of one sharp (F#), and a 3/8 time signature. The music is marked 'Allegro'. The second staff has a measure number '12' at the beginning. The third staff has a measure number '23' at the beginning. The fourth staff has a measure number '34' at the beginning and is marked 'piano'.

Sonata IV

Largo

Musical score for Violino I, Sonata IV, first movement. The score consists of two staves of music. The first staff begins with a treble clef, a key signature of three sharps (F#, C#, G#), and a 3/4 time signature. The music is marked 'Largo'. The second staff has a measure number '4' at the beginning.

Allegro

Musical score for Violino I, Sonata IV, second movement. The score consists of four staves of music. The first staff begins with a treble clef, a key signature of three sharps (F#, C#, G#), and a 2/4 time signature. The music is marked 'Allegro'. The second staff has a measure number '8' at the beginning. The third staff has a measure number '16' at the beginning. The fourth staff has a measure number '24' at the beginning.

Adagio

Musical score for Violino I, Sonata IV, third movement. The score consists of one staff of music. The staff begins with a treble clef, a key signature of three sharps (F#, C#, G#), and a 3/2 time signature. The music is marked 'Adagio'. The staff is marked 'piano' at the beginning and 'forte' later in the piece. The staff has a measure number '32' at the beginning.

ALLEMANDA

Allegro

Viol. II

Musical score for Allemanda, Viol. II part, measures 1-21. The score is written on five staves in treble clef with a key signature of three sharps (F#, C#, G#) and a common time signature. The tempo is marked 'Allegro'. The notation includes various rhythmic values, slurs, and repeat signs.

SARABANDA

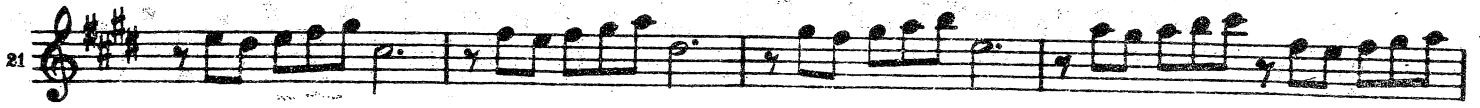
Largo

Musical score for Sarabanda, measures 1-9. The score is written on two staves in treble clef with a key signature of three sharps (F#, C#, G#) and a 3/4 time signature. The tempo is marked 'Largo'. The notation includes slurs and repeat signs.

GIGA

Allegro

Musical score for Giga, measures 1-17. The score is written on four staves in treble clef with a key signature of three sharps (F#, C#, G#) and a 12/8 time signature. The tempo is marked 'Allegro'. The notation includes slurs and repeat signs.

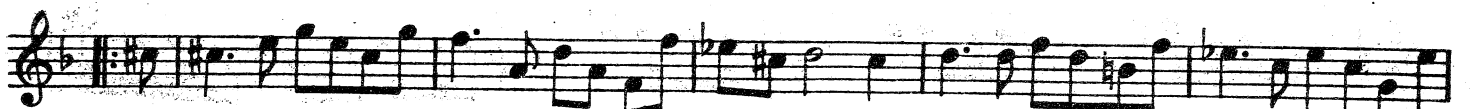
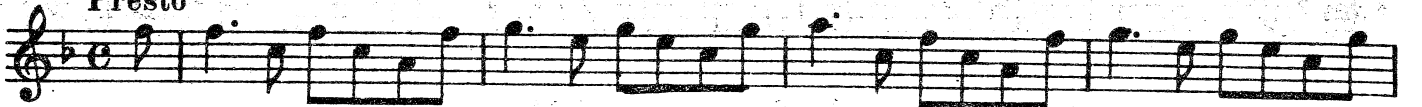


Sonata V

PRELUDIO  
Largo



ALLEMANDA  
Presto





CORRENTE  
Allegro

Musical score for Corrente, Allegro, measures 1-58. The score is written in treble clef with a key signature of one flat (B-flat) and a 2/4 time signature. It consists of five staves of music. The first staff (measures 1-10) features a rhythmic pattern of eighth notes. The second staff (measures 11-20) continues with eighth notes and includes a first ending bracket. The third staff (measures 21-30) shows a change in rhythm with some sixteenth notes. The fourth staff (measures 31-40) includes a first ending bracket and a fermata. The fifth staff (measures 41-58) concludes with a *piano* dynamic marking.

GAVOTTA  
Presto

Musical score for Gavotta, Presto, measures 59-64. The score is written in treble clef with a key signature of one flat (B-flat) and a 2/4 time signature. It consists of two staves of music. The first staff (measures 59-62) features a rhythmic pattern of eighth notes. The second staff (measures 63-64) concludes with a repeat sign.

Sonata VI

PRELUDIO  
Grave

Musical score for Preludio, Grave, measures 1-9. The score is written in treble clef with a key signature of two sharps (F# and C#) and a common time signature (C). It consists of four staves of music. The first staff (measures 1-4) features a rhythmic pattern of eighth notes. The second staff (measures 5-8) continues with eighth notes. The third staff (measures 9-9) concludes with a repeat sign.

CORRENTE  
Allegro

Musical score for the first section, 'CORRENTE Allegro'. It consists of six staves of music. The first staff begins with a treble clef, a key signature of one sharp (F#), and a 2/4 time signature. The music is written in a single melodic line. The second staff is marked with the number '10'. The third staff is marked with the number '17' and the dynamic marking 'piano'. The fourth staff is marked with the number '28'. The fifth staff is marked with the number '37'. The sixth staff is marked with the number '47' and the dynamic marking 'piano'. The section concludes with a double bar line and repeat dots.

Adagio

Musical score for the second section, 'Adagio'. It consists of two staves of music. The first staff begins with a treble clef, a key signature of one sharp (F#), and a common time signature (C). The tempo is marked 'Adagio'. The music is written in a single melodic line. The second staff is marked with the number '7'. The section concludes with a double bar line and repeat dots.

ALLEMANDA  
Allegro

Musical score for the third section, 'ALLEMANDA Allegro'. It consists of four staves of music. The first staff begins with a treble clef, a key signature of one sharp (F#), and a common time signature (C). The tempo is marked 'Allegro'. The music is written in a single melodic line. The second staff is marked with the number '6' and the dynamic marking 'piano'. The third staff is marked with the number '14'. The fourth staff is marked with the number '19' and the dynamic marking 'piano'. The section concludes with a double bar line and repeat dots.