

Ave Regina. w 3. Con Stru!

Basso Concerto:

Andante E_b $\frac{3}{4}$ \parallel g. Ave re = gina

$\text{lo} = = = \text{ram ave Domina}$

$\text{ange} = \text{lo} = = = \text{ram Salve radix, salve}$

porta $\text{ex qua mundo Lux est Cr = ta}$

$\text{ga} = = = = = \text{ude virgo glori =}$

ora $\text{super omnes speciosa valde}$

$\text{valde valde valde de = cora}$

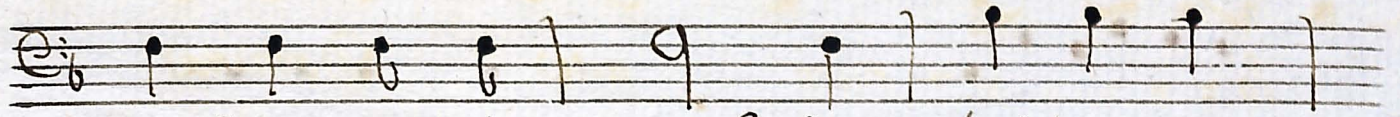
$\text{et pro nobis christus ex = ora}$

$\text{gaude virgo virgo glo =}$

rosa $\text{va = per om = nes spe = ci = osa}$ *volte*



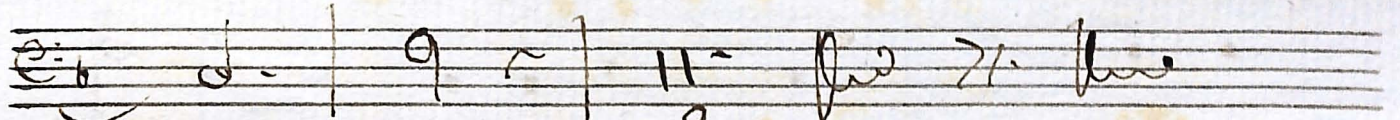
vale o valde de- cora et pro



robis et pro nobis christum e =



xo z = ra christu? e = xo z =



= z ra.

Laud Deo.

