

Violoncello

Allegro pesante

Duo I

for Cello and Contrabass

by Jeffrey Harrington

♩=220

8 *p* *cresc.*

Measures 1-8: Bass clef, key signature of one flat (B-flat), 3/8 time signature. The piece begins with a series of eighth notes, starting with a piano (*p*) dynamic and a crescendo (*cresc.*) marking.

5 *f*

Measures 9-12: Continuation of the eighth-note pattern, reaching a forte (*f*) dynamic.

9 *f*

Measures 13-16: Continuation of the eighth-note pattern, maintaining the forte (*f*) dynamic.

13 *con moto e bravura*
piu f

Measures 17-20: Continuation of the eighth-note pattern, marked *con moto e bravura* and *piu f*.

17

Measures 21-24: Continuation of the eighth-note pattern.

20

Measures 25-28: Continuation of the eighth-note pattern.

23

Measures 29-32: Continuation of the eighth-note pattern.

26 *mp*

Measures 33-36: Continuation of the eighth-note pattern, marked *mp*.

30

Measures 37-40: Continuation of the eighth-note pattern.

33

Measures 41-44: Continuation of the eighth-note pattern.

36 *poco rit.*
p *pp* *♩=190*

Measures 45-48: Tempo change to *poco rit.* and tempo marking *♩=190*. Dynamics range from *p* to *pp*.

39

Measures 49-52: Continuation of the eighth-note pattern.

43 *♩=200*
a tempo meno mosso
cresc. *mp*

Measures 53-56: Tempo change to *a tempo meno mosso* and tempo marking *♩=200*. Dynamics range from *cresc.* to *mp*.

Violoncello

48

53

58 *pp*

63 *poco accel.*
furioso

65 *f* $\text{♩} = 210$ *con forza*
piu f

69

73

78 *p*

82

86

89 *f*

92

95

98 *ff* *poco rit.*

101 $\text{♩} = 190$ *p* *pp*

102



107



111



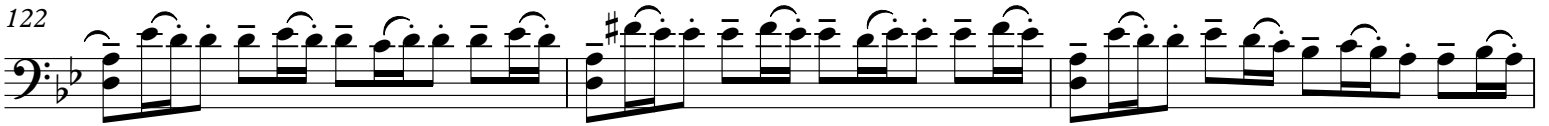
115



119



122



125



128



131



135



138



141



143

