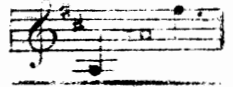


Nº 1 IN D^b



NEW EDITION.

Nº 2 IN D



SUNG BY
MISS CLARA BUTT.

WHEN TWO THAT LOVE ARE PARTED

(LUNGI DAL CARO BENE)

Song

BY

SECCHI.

With Italian and English Words

THE ENGLISH TRANSLATION BY

THEO. MARZIALS.

Arranged by

* A * L *

PRICE 60 CENTS (NET)

BOOSEY & C.

NEW YORK - TORONTO - LONDON (ENG.)
9 EAST 17TH ST. RYRIE BLDG. YONGE ST. 295 REGENT ST., W.

THIS SONG MAY BE SUNG IN PUBLIC WITHOUT FEE OR LICENSE
THE PUBLIC PERFORMANCE OF ANY PARODIED VERSION, HOWEVER, IS STRICTLY PROHIBITED

OTHER RECENT SUCCESSFUL SONGS BY EMINENT COMPOSERS

LOVE ME OR NOT

No. 1 in E
Words from
THOMAS CAMPION'S
4th Book of Aires 1617
Largo.

No. 2 in G
Music by SECCHI.
Arranged by A.L.

Love me or not, — Love her I must or die; — Leave me or not, Fol-lower needs must I; —
Oh! that she might All my wish'd comforts give; — How rich in her, — How happy I should live!

rall. ad lib.
cresc. f
rall. col voce

Copyright MDCCCXCIII by Boosey & Co. New Edition, Copyright MCM I by Boosey & Co.

A PASTORAL

No. 1 in E^b
Allegretto grazioso. (M.M. ♩ = 80)
p e leggiero

No. 2 in F
By VERACINI.
Arranged by A.L.

From the Opera of Rosalinda

O-ver the hill-top yon-der, Come, maid-en, let us wan-der, Come, maid-en, let us wan-der, There on my
pipe I'll play, on my pipe I'll play, And twine thee a gar-land gay, and twine thee a gar-land gay. Ah!

pp e leggiero
pp
mf

Copyright MDCCCXCVI by Boosey & Co.

BOIS EPAIS (SOMBRE WOODS)

No. 1 in E^b
Largo

No. 2 in F
Music by LULLY. (1684)
Arr. by A.L.

Bois é-pais re-dou-ble ton om-bre, Tu ne sau-rais être as-sez som-bre, Tu ne peux trop ca-cher Mon
Soin-bre woods, ye glades dark and lone-ly, Where midnight gloom enters on-ly, Oh! hide my slighted love In
mal-heur-eux a-mour. Bois é-pais re-dou-ble ton om-bre, Tu ne sau-rais être as-sez som-bre, Tu
your un-bound-ed night. Soin-bre woods, Ye glades dark and lone-ly, Where midnight gloom enters on-ly, Oh!

sans respirer
pp
col voce pp

Copyright MDCCCXCII by Boosey & Co.

BOOSEY & CO.
NEW YORK TORONTO LONDON, (ENG.)

WHEN TWO THAT LOVE ARE PARTED.

WHEN two that love are parted,
Never in life to meet again,
Even the bravest hearted
But live to languish
In bitter anguish,
And only Death can heal the pain.
Had they no hope to guide them,
Where ought can ne'er divide them,
Their lives were lived all in vain.

Translated by THEO. MARZIALS.

LUNGI DAL CARO BENE.

LUNGI dal caro bene,
Vivere non poss' io !
Sono in un mar di pene.
Lungi dal caro bene,
Sento mancar il cor.
Un dolce' estremo sonno,
Se lei mirar non ponno,
Mi chiuda i lumi ancor.

WHEN TWO THAT LOVE ARE PARTED.

(LUNGI DAL CARO BENE.)

English words by
THEO. MARZIALS.

SECCHI.

Arranged by
A. L.

VOICE. *Largo.*

PIANO. *largo con espress.*

When

rit: e decres.

con molto espress.

Lun - - gi dal ca - - ro be - - ne,
two that love are part - - ed,

dolce

* This note in voice and accompaniment to be omitted when sung in Italian.

Vi - ve - re non poss' - - i - - o!
 Ne - ver in life to meet a - gain,

pp

So - no in un mar di pe - ne. Lun - gi dal
 E - ven the bra - - vest heart - ed But live to

stringendo un poco *con espress*
 ca - ro, dal ca - ro be - - ne, Sen - to man -
 lan - guish In bit - ter an - - guish, And on - ly'

8 8

- car, man - car il cor
 Death can heal the pain.

rit: e decres.

6

p dolce espress.

Un dolc' es - tre - mo... son - - - no,
 Had they no hope to... guide them,

p dolce espress.

p

Se lei mi - rar non pon - - - no, Mi chiu - dai
 Where ought can ne'er di - - vide them, Their lives were

p

lu - - - mi an cor...
 lived all in vain...

pp dolce

pp dolce assai

Lun - - gi dal ca - - ro be - - ne,
 When two that love are part - - ed,

pp dolce assai

cres.

Vi - ve - re non poss' i - o! So - no in un mar di
 Ne - ver in life to meet a - gain, E - ven the bra - vest

f cres. e stringendo colla voce

stringendo e < con anima

pe - - ne, Lun - gi dal ca - ro, dal ca - ro be - - ne, Sen - to man -
 heart - - ed But live to lan - guish In bit - ter an - guish, And on - ly

stringendo

ad lib Adagio

- car, man - car.... il cor,... Sen - to man - car, man -
 Death can heal... the pain,... And on - ly Death can

ff colla voce

f *decres.*

- car. il cor.
 heal. the pain.

f *decres.* *pp*

When two that love are parted.

OTHER RECENT SUCCESSFUL SONGS BY EMINENT COMPOSERS

No. 1 Medium  **LOSS**  No. 2 High

Words by JESSIE B. RITTENHOUSE. Music by DAVID W. GUION.

Andante Moderato
 (a) LOSS *mp* Once was the need of you a pain too great to bear, And all my heart went calling you, in work in song and prayer;

Moderato, con moto, espressivo
 (b) WITHIN YOUR EYES *ten.* All the gifts I did not ask, Life came and brought to me, Un-til I stood a-mazed be-ten.

Copyright MCMXVIII by Boosey & Co.

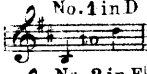
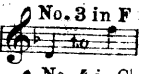
No. 1 in Bb  **LOVE'S ENCHANTMENT**  No. 2 in D

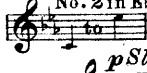
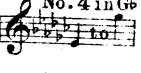
Words by JOHN DOWERS. Music by ROBERT BATTEN.

Moderato
 Soft as the night falls o'er the drooping ro-ses, Like snow-flakes, when the wind is in the west,
 Sleep, dear-est one, now all the world re-po-ses, And may thy dreams with an-gel guards be blest.

Two pedals *cresc.* *colla voce*

Copyright MCMVI by Boosey & Co.

No. 1 in D  **NOW SLEEPS THE CRIMSON PETAL**  No. 3 in F

No. 2 in Eb  Words by TENNYSON. Sung by Mr. John McCormack. Music by ROGER QUILTER.  No. 4 in Gb

p *Slow, with emphasis.*
 Now sleeps the crimson petal, now the white; Nor waves the cypress in the palace walk;
 the porphyry font: The fire-fly wa-kens: waken thou with me. Now folds the lily all her sweetness

with passion. *pp*

Copyright MCMIV by Boosey & Co.

BOOSEY & CO.

NEW YORK

TORONTO

LONDON (ENG.)