

# SUNG BY

Mesdames FRANCES ALDA, ZABETTA BRENSKA, PAULINE DONALDA, ALMA GLUCK,  
LOUISE HOMER, MARY JORDAN, CHRISTINE MILLER, ALICE NIELSON,  
ANITA RIO, EMMA ROBERTS and MARCELLA SEMBRICH.

Messrs. PAUL ALTHOUSE, DAN BEDDOE, CHARLES NORMAN GRANVILLE, GEORGE  
HAMLIN, PERCY HEMUS, ARTHUR HERSCHMANN, REDFERNE HOLLINSHEAD,  
FRANCIS ROGERS, EDGAR SCHOFIELD and WILLIAM WHEELER.

No 1 IN C



116006

No 2 IN D<sup>b</sup>



116040

No 3 IN F



116059

Respectfully dedicated to

MISS MARY JORDAN

# DEEP RIVER

## SONG

## OLD NEGRO MELODY

Arranged by

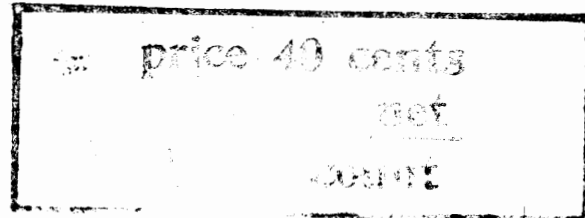
# H.T. BURLEIGH

~~Price 60 cents~~

COPYRIGHT MCMXVII,  
BY G. RICORDI & CO., INC.

G. RICORDI & Co.,  
14 EAST 43<sup>RD</sup> STREET  
NEW YORK

AND AT  
LONDON, PARIS, LEIPZIG,  
ROME, PALERMO, NAPLES





# Deep River

Old Negro melody

Arranged by  
H. T. BURLEIGH

Voice *Lento* *p*

Deep riv - er, my

Piano *p* *pp*

home is o - ver Jor - dan, Deep

riv - er, Lord, I want to cross o - ver in - to camp-ground.

*p*

Deep — riv - er, my home is o - ver Jor - dan

Deep — riv - er, Lord, I want to cross o - ver in - to camp - ground.

*mf*

Oh don't you want to go — to that gos - pel —

*mf*

feast, — That prom - is'd land — where

all — is peace? Oh deep —

riv - er, Lord, I want to cross o - ver in - to camp-ground. —