

Suite in E Major for Orchestra

Viola

R. Rolock

$\text{♩} = 120$

4

mf *f*

8

1. 2.

12

3 3 3 3 3 3

16

3 3 3 3

19

3 3 3 3 *pp*

22

24

26

28

V.S.

Viola

30

32

34

36

44

48

53

58

62

65

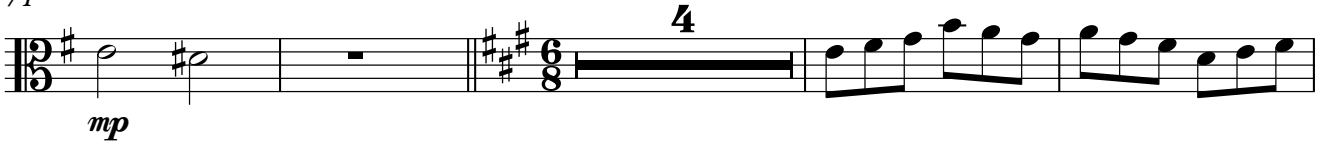
Viola

68



71

♩ = 130



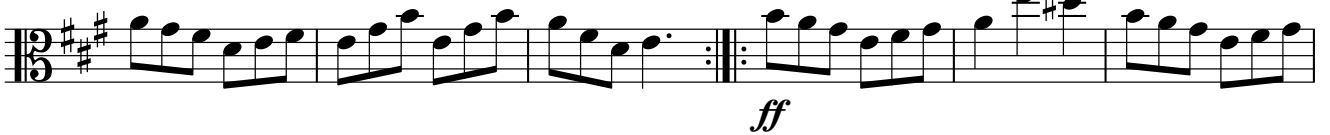
79



85



90



96



102



108



114



120



124 Viola

1. 2.