

Fantasia

Peter Philips

Intavolierung - Anton Höger

1 1 1 1 1 1 1 1 1 1 1 1 1 1 1 1 1 1

L-4
in D



21



33



39



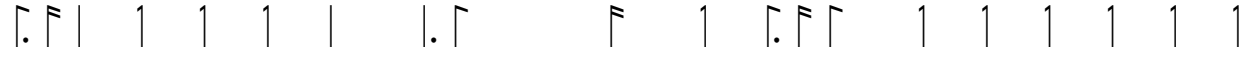
53



67



77



92

	δ	δ δ	a δ	a c δ a				a c δ a c δ	
								c e a c	a c

99

	a c δ c a	δ c a	δ c a	δ b a c	a δ a b δ	δ c a	a δ c a	δ b a δ c a	

102

	a δ c a	c a	a	c δ c	δ b	a a a b	δ a	c a c δ	a

110

		δ	δ δ	a δ	a b δ a	a	c δ a a	a δ c a δ b	

121

	a c a c	c	δ δ δ	a δ b a c	δ a c		c c c	a c e a	c a c δ

131

	a δ c a δ b	a c a c	a δ b a			δ δ δ	a δ a b	δ a δ c a	c

140

					a c a c	a e a δ	a a δ a b	δ a e a	δ a δ a
					e	e		e	

150

b	c	a	b	d	a	c	d	a	a	e	a	d	b	a	c	a	e	a	d	a	c	d	c	a	e	a	c	c
---	---	---	---	---	---	---	---	---	---	---	---	---	---	---	---	---	---	---	---	---	---	---	---	---	---	---	---	---

158

d	d	a	d	a	b	d	a	c	a	c	d	a	c	d	a	d	a
a																	

176

d	c	a	d	c	a	d	a	c	d	a	c	a	d	c	d	a	a	c	c	d

184

c	a	c	a	c	d	c	d	a	c	c	a	d	c	a	c	a	c	d	d	c	d

193

b	a	c	a	c	c	a	d	b	a	c	a	e	a	a	d	c	a	d	c	d	c

200

d	d	b	a	c	a	d	c	a	e	a	c	c	a	e	a	c	e	a	c	a	c	d	a	d	d	d	d	c

205

d	d	b	a	c	d	b	a	c	a	d	c	a	d	b	a	a	d	b	a	c	a	a	d	b	a	c	a	e

213

Staff notation for measure 213: $a\ c\ a\ b\ \delta\ a$ | c | $c\ c\ c$ | $a\ c$ | $e\ a\ c\ a$ | $c\ a\ c\ d$ | $c\ d$

226

Staff notation for measure 226: $\delta\ \delta\ \delta\ a$ | $\delta\ a\ c\ \delta$ | $a\ b\ a$ | $\delta\ b\ a$ | c | $a\ a\ a$ | $c\ a$ | $c\ e$ | $a\ c$ | a

237

Staff notation for measure 237: $\delta\ \delta\ \delta$ | $a\ \delta\ a\ c$ | $\delta\ a$ | $a\ e\ a\ a$ | $c\ e\ a\ c\ a\ c$ | δ | $a\ a\ c\ e$

244

Staff notation for measure 244: $a\ c\ a\ b$ | $a\ c\ a\ b\ \delta\ b\ \delta\ \delta\ b\ a\ c$ | $a\ e\ a$ | $\delta\ a\ \delta\ a$ | $a\ \delta\ a\ c\ a\ b$ | $\delta\ a\ \delta\ a$

249

Staff notation for measure 249: $e\ a\ c$ | $a\ b\ \delta\ a\ c\ \delta\ \delta\ c\ a$ | $\delta\ a\ c\ a\ \delta\ b\ \delta\ \delta\ c\ \delta$ | $\delta\ \delta\ \delta$